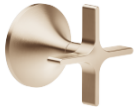


VAIA Wall valve clockwise closing 1/2" - Brushed Champagne (22kt Gold)

VAIA

36 607 809



- rosette Ø 60 mm
- head part with cut-to-length spindle and sleeve
- WRAS

| | | |
|---|--------------------------------|---------------|
|  | Brushed Champagne (22kt Gold) | 36 607 809-46 |
|  | Chrome | 36 607 809-00 |
|  | Brushed Platinum | 36 607 809-06 |
|  | Platinum | 36 607 809-08 |
|  | Dark Chrome | 36 607 809-19 |
|  | Brushed Durabronze (23kt Gold) | 36 607 809-28 |
|  | Brushed Bronze | 36 607 809-42 |
|  | Champagne (22kt Gold) | 36 607 809-47 |
|  | Brushed Dark Platinum | 36 607 809-99 |

Required miscellaneous



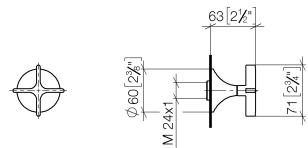
Wall valve 1/2" -

35 607 970 90

- max. recess depth 145 mm
- min. recess depth 75 mm

36 607 809

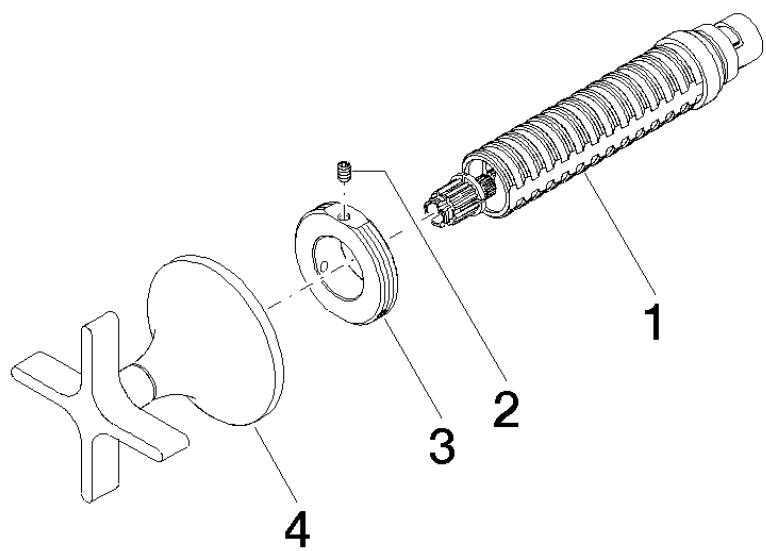
mm [inches]



| Codes & Standards | | | |
|-------------------|----------|------------------------|-----------------------------|
| ASME A112.18.1 | cUPC | DIN 4109 | EN 1111 |
| EN 200 | ISO 3822 | Scottish Water Byelaws | UK Water Supply Regulations |
| Ü-Zeichen | | | |

| Certificates and sustainability | | | | |
|---------------------------------|-----------|--------|-----------|-----------------|
| DVGW_DW-6501DN0 | WRAS_2011 | LGA_29 | WRAS_2010 | DVGW_DW-6512DN0 |
| IAPMO_4976 (| | | | |

36 607 809



Spare parts list

| No. | Item Number | Name | Quantity used | Delivery time |
|-----|--------------------|--------|---------------|---------------|
| 2 | 09 31 11 008 90 | pin | 1.00 | 2 |
| 3 | 09 21 02 163 90 | disc | 1.00 | 2 |
| 1 | 90 90 03 143 00 90 | top | 1.00 | 2 |
| 4 | 90 20 80 014 00-46 | handle | 1.00 | 30 |