

SYMETRICS Wall valve anti-clockwise closing 3/4" - Platinum

SYMETRICS

36 608 985 Product version from 6/1/2024



- rosette 60 x 60 mm
- head part with cut-to-length spindle and sleeve
- WRAS

| | | |
|---|----------------------------------|---------------|
|  | Platinum | 36 608 985-08 |
|  | Chrome | 36 608 985-00 |
|  | Brushed Platinum | 36 608 985-06 |
|  | Dark Chrome | 36 608 985-19 |
|  | Brushed Light Gold | 36 608 985-27 |
|  | Brushed Durabrass (23kt Gold) | 36 608 985-28 |
|  | Matte Black | 36 608 985-33 |
|  | Brushed Chrome | 36 608 985-93 |
|  | Brushed Dark Platinum | 36 608 985-99 |

Required miscellaneous

- | | | |
|---|---|---------------|
|  | Wall valve 3/4" - •max. recess depth 145 mm •min. recess depth 75 mm | 35 608 970 90 |
|---|---|---------------|

mm [inches]

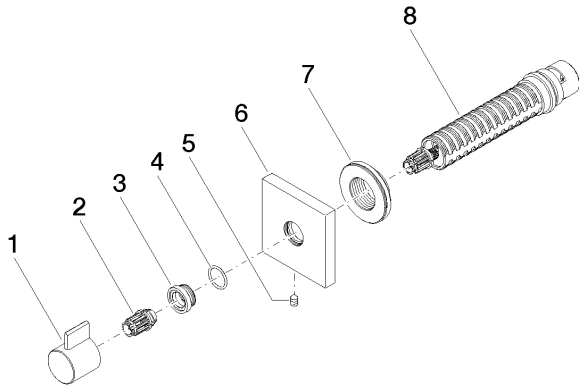


Codes & Standards

| | | | |
|----------------|------|---------------------------|--------------------------------|
| ASME A112.18.1 | cUPC | Scottish Water Byelaws | UK Water Supply Regulations |
|----------------|------|---------------------------|--------------------------------|

Certificates and sustainability

| | |
|-----------|--------------|
| WRAS_2010 | IAPMO_4976 (|
|-----------|--------------|



Spare parts list

| No. | Item Number | Name | Quantity used | Delivery time |
|-----|--------------------|------------|---------------|---------------|
| 8 | 90 90 03 128 00 90 | top | 1.00 | 2 |
| 1 | 09 20 98 002-08 | handle | 1.00 | 40 |
| 2 | 09 12 12 005 90 | fixing cap | 1.00 | 2 |
| 3 | 09 12 12 043-08 | base | 1.00 | 40 |
| 4 | 09 14 10 017 90 | seal | 1.00 | 2 |
| 7 | 09 21 02 151 90 | sleeve | 1.00 | 2 |
| 6 | 09 27 98 014-08 | rosette | 1.00 | 40 |
| 5 | 90 31 11 004 00 90 | pin | 1.00 | 2 |