







CYO Wall-mounted single-lever basin mixer without pop-up waste - Brushed Platinum

CYO

36 860 811			
	<ul style="list-style-type: none"> • 160mm projection • fixed spout • rectangular, air-enriched flow • hole diameter spout 37 mm • hole diameter single-lever mixer 57 mm • rosette for mixer 80 x 80mm • max. flow 4.5 l/min • lead-free • This product can help a building meet the requirements of Green Building Rating Systems, e.g. LEED®, BREEAM®, DGNB • WRAS 	 Brushed Platinum	36 860 811-06
		 Chrome	36 860 811-00
		 Dark Chrome	36 860 811-19
		 Brushed Durabrass (23kt Gold)	36 860 811-28
		 Brushed Dark Platinum	36 860 811-99

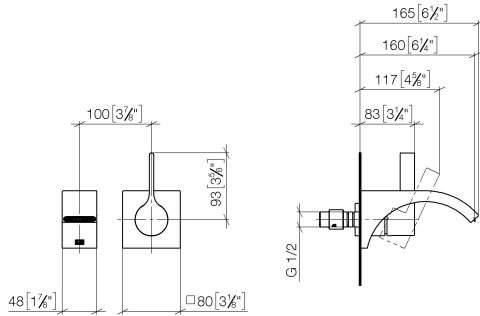
Required miscellaneous

	Concealed wall-mounted single-lever mixer -	35 860 970 90
	<ul style="list-style-type: none"> • max. recess depth 95 mm • min. recess depth 80 mm • mixer can be placed above, to the left or to the right of the spout. 	

CYO Wall-mounted single-lever basin mixer without pop-up waste - Brushed Platinum

CYO

36 860 811
mm [inches]



Flow rate chart



Codes & Standards

ASME A112.18.1	cUPC	DIN 4109	EPA WaterSense
ISO 3822	NSF372	NSF61	Scottish Water Byelaws
UK Water Supply Regulations	Ü-Zeichen	WaterSense	



CYO Wall-mounted single-lever basin mixer without pop-up waste - Brushed Platinum

CYO

36 860 811				
Certificates and sustainability				
IAPMO_N-4976	WRAS_2107	IAPMO_6397	LGA_38	IAPMO_8834
IAPMO_4976 (

36 860 811



Spare parts list

No.	Item Number	Name	Quantity used	Delivery time
	6 09 11 02 288-06	cover	1.00	10
	3 09 20 80 021-06	handle	1.00	10
	5 90 31 20 087 00-06	plug	1.00	10
	9 90 15 05 064 01 90	cartridge	1.00	2
	1 13 800 811-06	CYO Wall-mounted basin spout without pop-up waste - Brushed Platinum	1.00	10
	7 09 27 78 039-06	rosette	1.00	10
	2 09 24 03 072 10 90	nipple	1.00	2
	10 90 30 09 064 00 90	key	1.00	2
	8 90 14 10 049 00 90	seal	1.00	2
	4 90 31 11 030 00 90	pin	1.00	2