

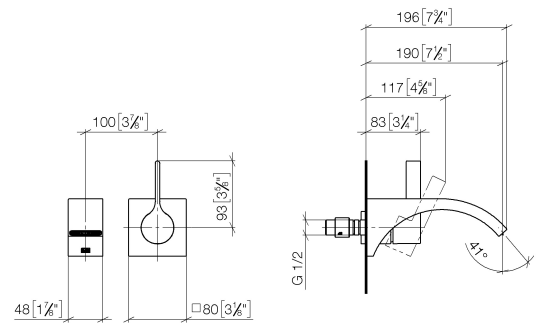
CYO Wall-mounted single-lever basin mixer without pop-up waste - Dark Chrome

CYO

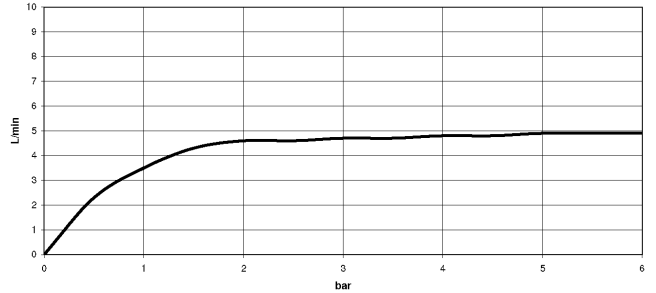
36 861 811			
	<ul style="list-style-type: none"> <li>190mm projection</li> <li>fixed spout</li> <li>rectangular, air-enriched flow</li> <li>hole diameter spout 37 mm</li> <li>hole diameter single-lever mixer 57 mm</li> <li>rosette for mixer 80 x 80mm</li> <li>max. flow 4.5 l/min</li> <li>lead-free</li> <li>This product can help a building meet the requirements of Green Building Rating Systems, e.g. LEED®, BREEAM®, DGNB</li> <li>WRAS</li> </ul>	<div> <div></div> <div>Dark Chrome</div> <div>36 861 811-19</div> </div> <div> <div></div> <div>Chrome</div> <div>36 861 811-00</div> </div> <div> <div></div> <div>Brushed Platinum</div> <div>36 861 811-06</div> </div> <div> <div></div> <div>Brushed Durabrass (23kt Gold)</div> <div>36 861 811-28</div> </div> <div> <div></div> <div>Brushed Dark Platinum</div> <div>36 861 811-99</div> </div>	

36 861 811

mm [inches]



Flow rate chart



Codes & Standards

ASME A112.18.1	cUPC	NSF372	NSF61
----------------	------	--------	-------



CYO Wall-mounted single-lever basin mixer without pop-up waste - Dark Chrome

CYO

36 861 811

Certificates and sustainability

IAPMO\_N-4976

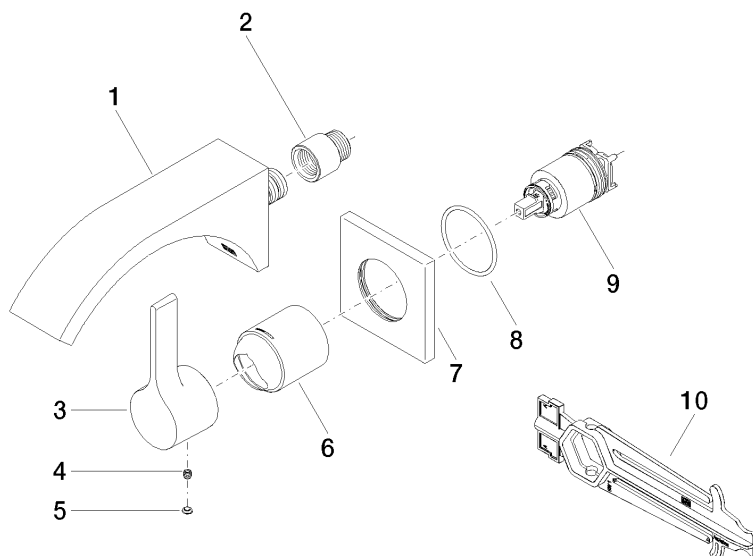
IAPMO\_6397

IAPMO\_4976 (

## CYO Wall-mounted single-lever basin mixer without pop-up waste - Dark Chrome

CYO

36 861 811  
Parts for other  
finishes can be found  
here: [Chrome](#)



### Spare parts list

No.	Item Number	Name	Quantity used	Delivery time
	2 09 24 03 072 10 90	nipple	1.00	2
	9 90 15 05 064 01 90	cartridge	1.00	2
	1 13 805 811-19	CYO Wall-mounted basin spout without pop-up waste - Dark Chrome	1.00	20
	3 09 20 80 021-19	handle	1.00	20
	5 90 31 20 087 00-19	plug	1.00	20
	6 09 11 02 288-19	cover	1.00	20
	4 90 31 11 030 00 90	pin	1.00	2
	8 90 14 10 049 00 90	seal	1.00	2
	10 90 30 09 064 00 90	key	1.00	2
	7 09 27 78 039-19	rosette	1.00	20