

41 630 979



- exposed trim parts
- AQUACIRCLE RAIN: Circular rain curtain, max. flow rate 12 l/min (at 3 bar)
- TEMPEST RAIN: Natural rain, max. flow rate 10 l/min (at 3 bar)
- QUEEN'S COLLAR CASCADE: Rounded cascade, max. flow rate 24 l/min (at 3 bar)
- EMBRACE CASCADE: Circular cascade, max. flow rate 60 l/min (at 3 bar)
- RGBW LED ambient lighting
- Matt white cover, RAL 9003
- with anti-scale system
- Outer diameter 1240 mm, opening diameter 450 mm
- Weight 22.5 kg
- Protection rating IP67
- Control elements not included among the items supplied

Ceiling module power supply

- 12V DC (CV)

Ambient lighting

- LED coloured light RGBW
- Bulbs protected against splashing water

Activation

- ZigBee Light Link RGBW controller
- Provided by customer: Zigbee gateway

Environment

- Not suitable for outdoor use.
- Not suitable for use in a steam room.
- Not suitable for use in chlorinated or salty environments.
- Comply with the protection zone regulations as defined in DIN VDE 0100, Part 701 (IEC 60364-7-701).
- Dornbracht recommends consulting a systems integrator.

Rain panel cover for adaptation to ceiling colour available in all RAL colours, price and delivery time on request includes light bulbs with a Class G energy efficiency

Rain panel cover for adaptation to ceiling colour available in all RAL colours, price and delivery time on request

includes light bulbs with a Class G energy efficiency

Required miscellaneous

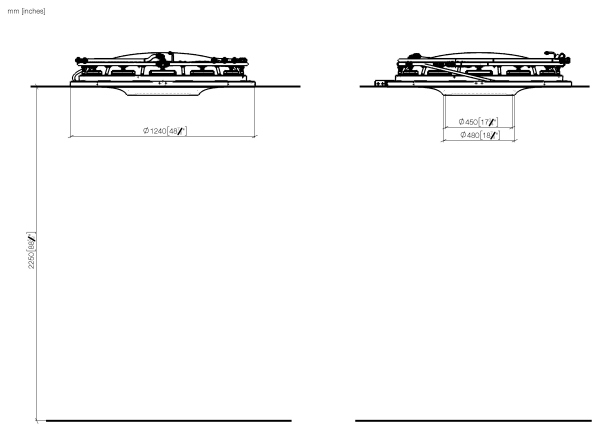


**AQUAMOON EMBRACE
Concealed ceiling installation box
with color light -**

35 630 970 90

- Ceiling installation enclosure 1356 x 1356 x 290 mm
- Ceiling installation enclosure 1356 x 1356 x 290 mm
- concealed rough parts
- Opening diameter 1252 mm
- min. recess depth 290 mm

41 630 979



Codes & Standards

DIN 4109

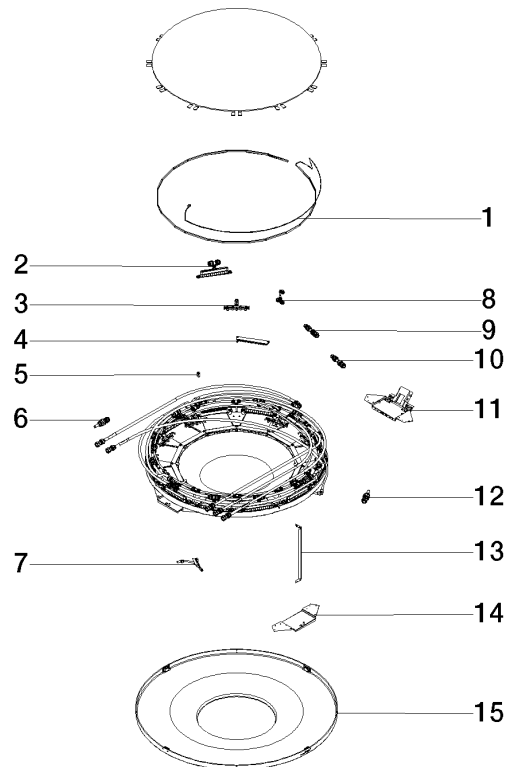
ISO 3822

Ü-Zeichen

Certificates and sustainability

LGA_38

41 630 979



Spare parts list

| No. | Item Number | Name | Quantity used | Delivery time |
|-----|--------------------|-------------------------|---------------|---------------|
| 4 | 90 17 20 221 00 90 | holder | 1.00 | 2 |
| 11 | 90 17 20 211 00 90 | joint | 1.00 | 2 |
| 3 | 90 17 09 056 02 90 | spout | 12.00 | 2 |
| 5 | 90 18 40 222 00 90 | adaptor | 24.00 | 2 |
| 2 | 90 17 09 058 00 90 | jet module | 12.00 | 2 |
| 1 | 90 10 01 183 01 90 | lamp | 1.00 | 2 |
| 7 | 90 17 09 057 00 90 | jet module | 12.00 | 2 |
| 15 | 90 11 02 325 00 90 | cover | 1.00 | 2 |
| 10 | 90 24 04 314 00 90 | connection TEMPEST | 1.00 | 60 |
| 12 | 90 24 04 314 01 90 | connection QUEENSCOLLAR | 1.00 | 2 |
| 13 | 90 17 20 217 00 90 | holder | 4.00 | 2 |
| 6 | 90 23 01 056 00 90 | adaptor | 1.00 | 2 |
| 14 | 90 17 20 216 00 90 | holder | 3.00 | 2 |
| 9 | 90 24 04 346 00 90 | connection AQUACIRCLE | 1.00 | 2 |
| 8 | 90 24 04 321 00 90 | threaded connector | 1.00 | 2 |