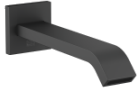
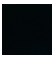
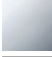
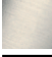
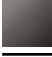




13 801 670



- saillie 200 mm
- jet normal rectangulaire
- diamètre de percement 37 mm
- raccord 1/2"
- débit d'eau maxi. 25,1 l/min avec une pression d'écoulement de 3 bars

	Noir mat	13 801 670-33
	Chrome	13 801 670-00
	Platine brossé	13 801 670-06
	Dark Chrome	13 801 670-19
	Or clair brossé	13 801 670-27
	Chrome brossé	13 801 670-93

Accessoires recommandés



- Coude mural à encastrer -** 35 085 970 90
- profondeur de montage mini. 90 mm
 - profondeur de montage max. 163 mm

13 801 670

mm [inches]

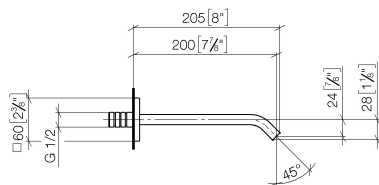
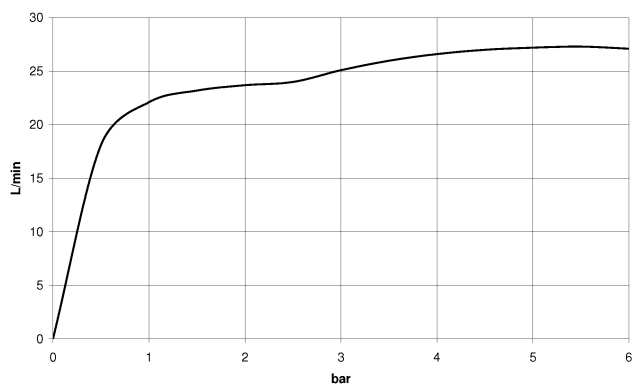


Diagramme de débit



Certificats

IAPMO_4976 (6).

