
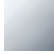

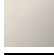




36 200 361



- inverseur rotatif
- rosace Ø 60 mm
- plaquette en porcelaine NEUTRE

	Laiton (Or 23cts)	36 200 361-09
	Chrome	36 200 361-00
	Platine brossé	36 200 361-06
	Platine	36 200 361-08
	Laiton brossé (Or 23cts)	36 200 361-28
	Dark Platinum brossé	36 200 361-99

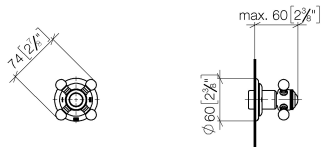
### Accessoires requis



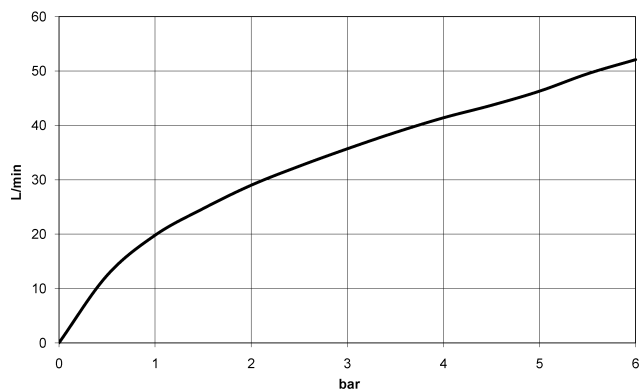
- Inverseur à 2 voies à encastrer -** 35 202 970 90
- profondeur de montage max. 155 mm
  - profondeur de montage mini. 85 mm

36 200 361

mm [inches]



**Diagramme de débit**

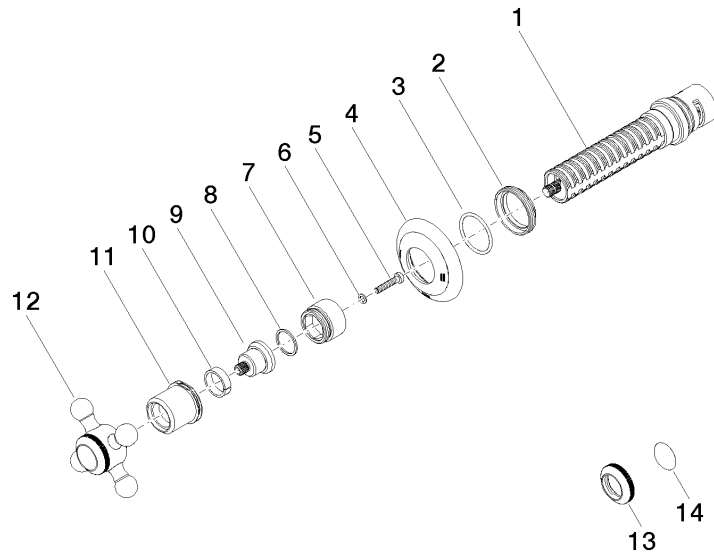


**Certificats**

LGA\_38379.

WRAS\_2307045.

36 200 361



### Liste des pièces de rechange

N°	Article Numéro	Désignation	Fréquence de montage	Délai de livraison
1	90 90 03 304 10 90	inverseur	1	2
2	09 23 10 125-00	écrou	1	10
3	90 14 10 063 00 90	joint	1	2
4	09 27 36 105-09	rosace	1	60
5	90 30 30 075 00 90	vis	1	2
6	09 30 11 194 90	rondelle	1	2
7	09 18 30 007-09	douille	1	60
8	90 28 10 030 00 90	anneau	1	2
9	09 12 12 064-09	prise	1	60
10	90 14 15 021 00 90	anneau	1	2
11	09 21 02 161-09	hotte	1	40
12	04 20 36 100 02-09	poignée	1	40
13	09 20 36 005-09	poignée	1	40
14	09 26 01 016 90	accessoires	1	2