

## WATER FALL Cascade spout for wall mounting - Brushed Chrome

IMO

13 420 979



- 120mm projection
- CASCADE, max. flow rate 26.5 l/min (at 3 bar)
- cover plate 240 x 60 mm
- 1/2" connection
- plug-link mounting
- WRAS 2111005

Fits: IMO, LULU, MADISON, MEM, TARA,  
CL.1, LISSÉ, VAIA, META, CYO

	Brushed Chrome	13 420 979-93
	Chrome	13 420 979-00
	Brushed Platinum	13 420 979-06
	Platinum	13 420 979-08
	Dark Chrome	13 420 979-19
	Light Gold	13 420 979-26
	Brushed Light Gold	13 420 979-27
	Brushed Durabronze (23kt Gold)	13 420 979-28
	Matte Black	13 420 979-33
	Brushed Bronze	13 420 979-42
	Brushed Champagne (22kt Gold)	13 420 979-46
	Champagne (22kt Gold)	13 420 979-47

13 420 979

mm [inches]



**Flow rate chart**



**Trajectory diagram**



**Codes & Standards**

ASME A112.18.1

cUPC

DIN 4109

ISO 3822

**Ü-Zeichen**



## WATER FALL Cascade spout for wall mounting - Brushed Chrome

---

IMO

13 420 979

### Certificates

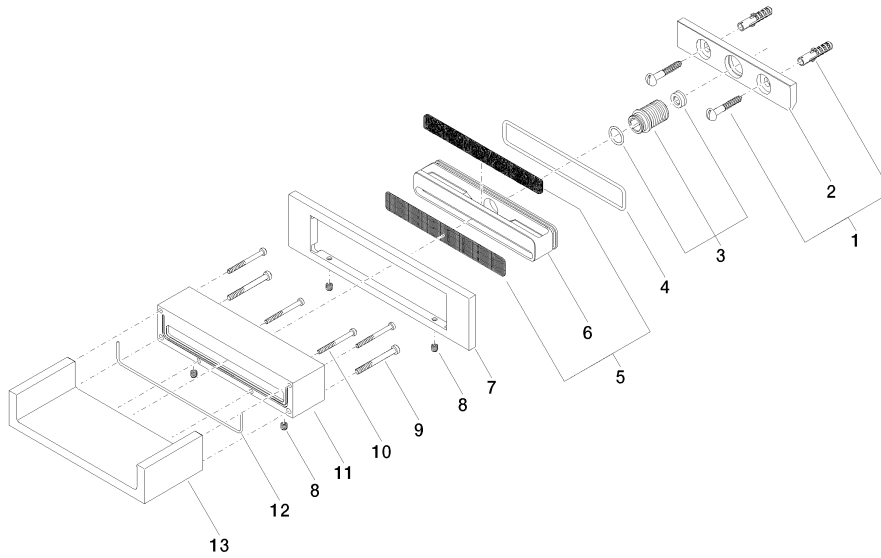
---

IAPMO\_4976

LGA\_18

13 420 979

Parts for other  
finishes can be found  
here: [Chrome](#)





## WATER FALL Cascade spout for wall mounting - Brushed Chrome

---

IMO

13 420 979

### **Spare parts list**