




WATER FALL Cascade spout with individual jets for wall mounting - Matte Black

13 425 979	Product version from 10/1/2023		
	<ul style="list-style-type: none"> • 22mm projection • PEARLSTREAM • plate 240 mm x 60 mm • connection 1/2", for shortening • plug-link mounting • Max. flow rate 9.5 l/min (at 3 bar) 		
			
		<div> <div></div> <div>Matte Black</div> </div>	13 425 979-33
		<div> <div></div> <div>Chrome</div> </div>	13 425 979-00
		<div> <div></div> <div>Brushed Platinum</div> </div>	13 425 979-06
		<div> <div></div> <div>Platinum</div> </div>	13 425 979-08
		<div> <div></div> <div>Dark Chrome</div> </div>	13 425 979-19
		<div> <div></div> <div>Light Gold</div> </div>	13 425 979-26
		<div> <div></div> <div>Brushed Light Gold</div> </div>	13 425 979-27
		<div> <div></div> <div>Brushed Durabronze (23kt Gold)</div> </div>	13 425 979-28
		<div> <div></div> <div>Brushed Bronze</div> </div>	13 425 979-42
		<div> <div></div> <div>Brushed Champagne (22kt Gold)</div> </div>	13 425 979-46
		<div> <div></div> <div>Champagne (22kt Gold)</div> </div>	13 425 979-47
		<div> <div></div> <div>Brushed Chrome</div> </div>	13 425 979-93
		<div> <div></div> <div>Brushed Dark Platinum</div> </div>	13 425 979-99

Recommended miscellaneous

	<div> <div>Concealed wall elbow -</div> <ul style="list-style-type: none"> • max. recess depth mm • min. recess depth mm </div>	35 085 970 90	

Recommended miscellaneous

	<div> <div>Concealed wall elbow -</div> <ul style="list-style-type: none"> • max. recess depth mm • min. recess depth mm </div>	35 085 970 90	

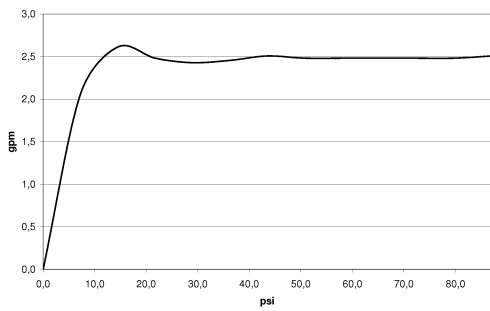


WATER FALL Cascade spout with individual jets for wall mounting - Matte Black

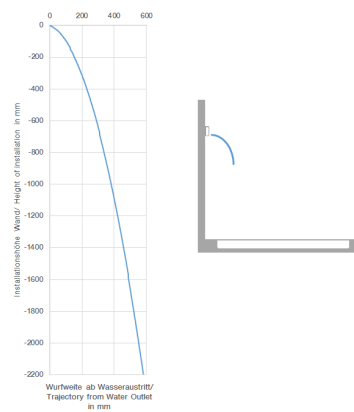
13 425 979 Product version from 10/1/2023
mm [inches]



Flow rate chart



Trajectory diagram



Codes & Standards

ASME A112.18.1 cUPC DIN 4109 ISO 3822

Ü-Zeichen



WATER FALL Cascade spout with individual jets for wall mounting - Matte Black

13 425 979 Product version from 10/1/2023

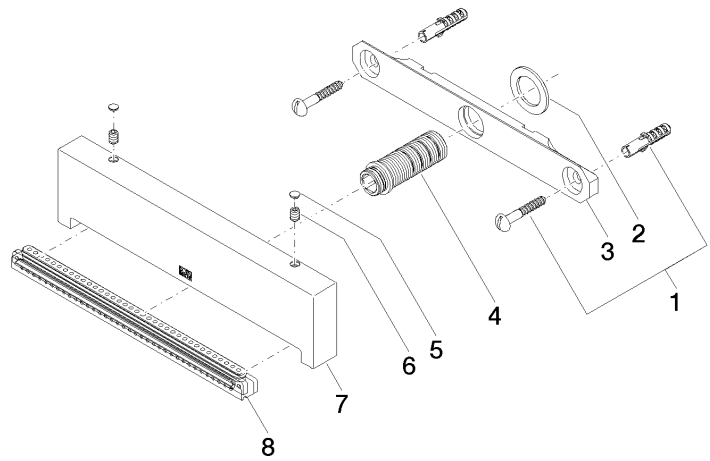
Certificates

LGA_19

IAPMO_4976

WATER FALL Cascade spout with individual jets for wall mounting - Matte Black

13 425 979 Product version from 10/1/2023



Spare parts list

No.	Item Number	Name	Quantity used	Delivery time
1	04 30 31 024 01 90	fixing set	1	2
2	09 14 05 009 90	seal	1	2
3	09 17 97 053 90	holder	1	2
4	90 24 03 199 00 90	connection	1	2
5	90 31 20 087 00-33	plug	1	30
6	09 31 11 144 90	pin	2	2
7	09 17 01 185 20-33	spout	1	30
8	90 29 03 071 00 90	insert	1	2