

WATER FALL Cascade spout with individual jets for wall mounting - Champagne (22kt Gold)

IMO

13 425 979



- 22mm projection
- PEARLSTREAM
- plate 240 mm x 60 mm
- connection 1/2", for shortening
- plug-link mounting
- Max. flow rate 9.5 l/min (at 3 bar)

Fits: IMO, LULU, MADISON, MEM, TARA,
CL.1, LISSÉ, VAIA, META, CYO

| | | |
|--|--------------------------------|---------------|
| | Champagne (22kt Gold) | 13 425 979-47 |
| | Chrome | 13 425 979-00 |
| | Brushed Platinum | 13 425 979-06 |
| | Platinum | 13 425 979-08 |
| | Dark Chrome | 13 425 979-19 |
| | Light Gold | 13 425 979-26 |
| | Brushed Light Gold | 13 425 979-27 |
| | Brushed Durabronze (23kt Gold) | 13 425 979-28 |
| | Matte Black | 13 425 979-33 |
| | Brushed Bronze | 13 425 979-42 |
| | Brushed Champagne (22kt Gold) | 13 425 979-46 |
| | Brushed Chrome | 13 425 979-93 |
| | Brushed Dark Platinum | 13 425 979-99 |

Recommended miscellaneous



- Concealed wall elbow -**
- max. recess depth 163 mm
 - min. recess depth 90 mm

35 085 970 90

Recommended miscellaneous



- Concealed wall elbow -**
- max. recess depth 163 mm
 - min. recess depth 90 mm

35 085 970 90

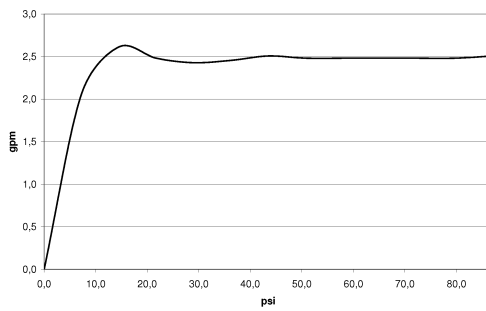
WATER FALL Cascade spout with individual jets for wall mounting - Champagne (22kt Gold)

IMO

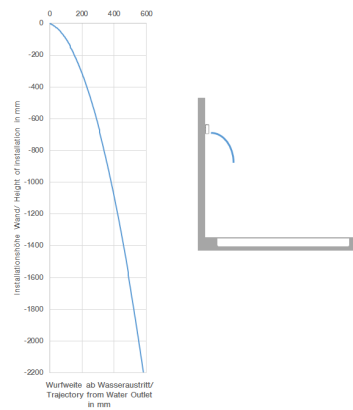
13 425 979
mm [inches]



Flow rate chart



Trajectory diagram



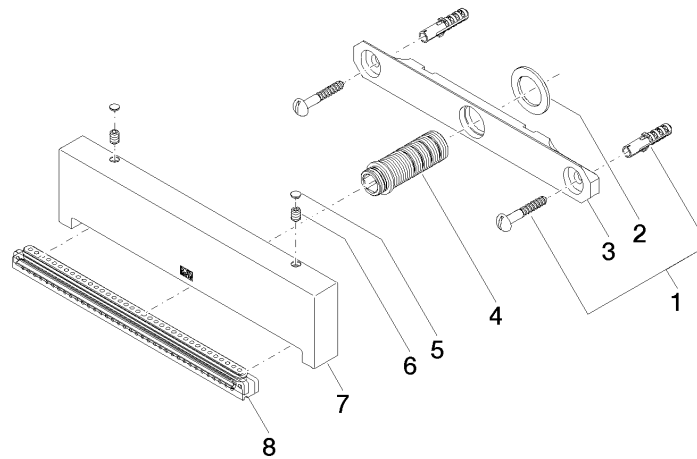
Certificates

LGA_19935.

WATER FALL Cascade spout with individual jets for wall mounting - Champagne (22kt Gold)

IMO

13 425 979



Spare parts list

| No. | Item Number | Name | Quantity used | Delivery time |
|-----|--------------------|------------|---------------|---------------|
| 1 | 04 30 31 024 01 90 | fixing set | 1 | 2 |
| 2 | 09 14 05 009 90 | seal | 1 | 2 |
| 3 | 09 17 97 053 90 | holder | 1 | 2 |
| 4 | 90 24 03 199 00 90 | connection | 1 | 2 |
| 5 | 90 31 20 087 00-47 | plug | 1 | 30 |
| 6 | 09 31 11 144 90 | pin | 2 | 2 |
| 7 | 09 17 01 185 20-47 | spout | 1 | 30 |
| 8 | 90 29 03 071 00 90 | insert | 1 | 2 |