

MEM Bath cascade spout without diverter for deck mounting - Brushed Dark Platinum

MEM

13 630 740



- 235mm projection
- cascade
- height of mixer 100 mm
- height up to aerator 80 mm
- hole diameter 32 mm
- 1/2" connection
- max. flow 26.5 l/min at 3 bar flow pressure
- WRAS

	Brushed Dark Platinum	13 630 740-99
	Chrome	13 630 740-00
	Brushed Platinum	13 630 740-06
	Platinum	13 630 740-08
	Dark Chrome	13 630 740-19
	Brushed Durabronze (23kt Gold)	13 630 740-28
	Brushed Champagne (22kt Gold)	13 630 740-46
	Champagne (22kt Gold)	13 630 740-47

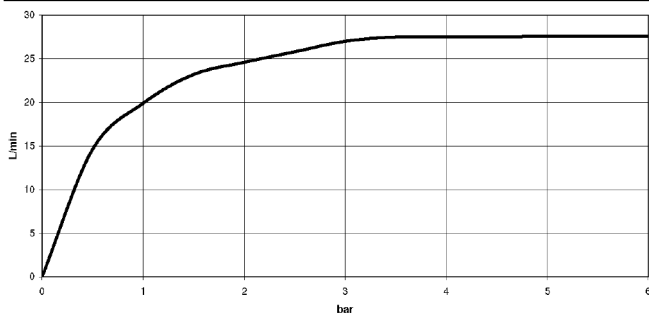
MEM Bath cascade spout without diverter for deck mounting - Brushed Dark Platinum

MEM

13 630 740
mm [inches]



Flow rate chart



Trajectory diagram



Codes & Standards

ASME A112.18.1

cUPC

DIN 4109

ISO 3822

Scottish Water
Byelaws

UK Water Supply
Regulations

Ü-Zeichen



MEM Bath cascade spout without diverter for deck mounting - Brushed Dark
Platinum

MEM

13 630 740

Certificates and sustainability

IAPMO_4976

LGA_19

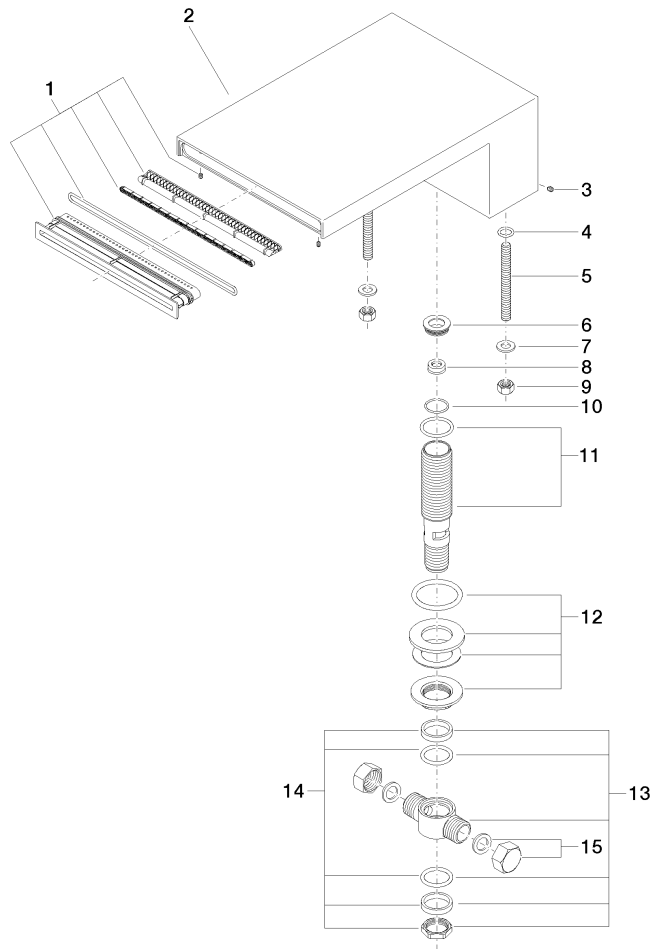
WRAS_240502

MEM Bath cascade spout without diverter for deck mounting - Brushed Dark Platinum

MEM

13 630 740

Parts for other
finishes can be found
here: [Chrome](#)



Spare parts list

No.	Item Number	Name	Quantity used	Delivery time
	3 09 31 11 044 90	pin	1.00	2
	8 09 23 01 057 90	flow reducer	1.00	2
	1 90 29 03 059 00 90	insert	1.00	2
	15 04 21 02 006 00 92	cap	2.00	2
	5 09 31 11 011 90	pin	2.00	2
	7 09 30 11 045 90	disc	2.00	2
	4 09 14 10 008 90	seal	2.00	2
	11 90 30 01 033 00 90	base	1.00	2
	10 09 14 10 140 90	seal	1.00	2
	6 09 24 04 246 20 90	nipple	1.00	2
	2 09 11 74 040-99	spout	1.00	60
	14 90 23 10 012 00 90	gasket kit	1.00	2
	9 09 23 10 023 90	nut	2.00	2
	12 04 23 10 004 04 90	fixing set	1.00	2
	13 90 17 11 020 10 90	distributor	1.00	2