

## Deck-mounted basin spout without pop-up waste - Chrome

TARA

13 716 882



Fits: TARA, META

- 166mm projection
- pivotable spout 360°
- circular, air-enriched flow
- height of mixer 285 mm
- height up to aerator 163 mm
- hole diameter 35 mm
- rosette Ø 60 mm
- 2x screw-in M 10 x 1 pressure hose, leak-tested
- 1/2" connection
- max. flow 7 l/min
- lead-free
- This product can help a building meet the requirements of Green Building Rating Systems, e.g. LEED®, BREEAM®, DGNB
- WRAS 1909064

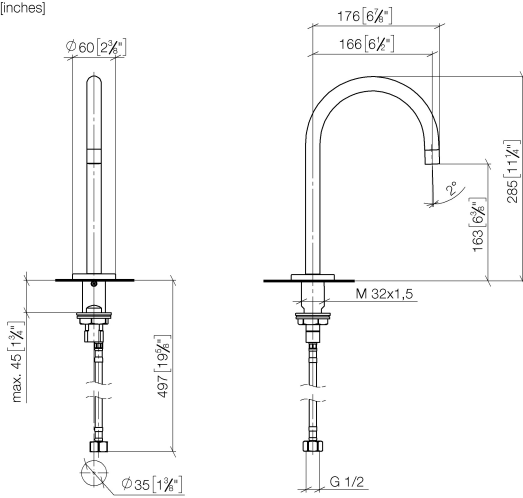
For Touchfree control please order eSet Touchfree  
WITH or WITHOUT temperature adjustment

### Deck-mounted basin spout without pop-up waste - Chrome

TARA

13 716 882

mm [inches]



### Flow rate chart



## Codes & Standards

DIN 4109

Executive Order  
no. 1007

ISO 3822

## Scottish Water Byelaws

## UK Water Supply Regulations

## Ü-Zeichen



## Deck-mounted basin spout without pop-up waste - Chrome

---

TARA

13 716 882

### Certificates

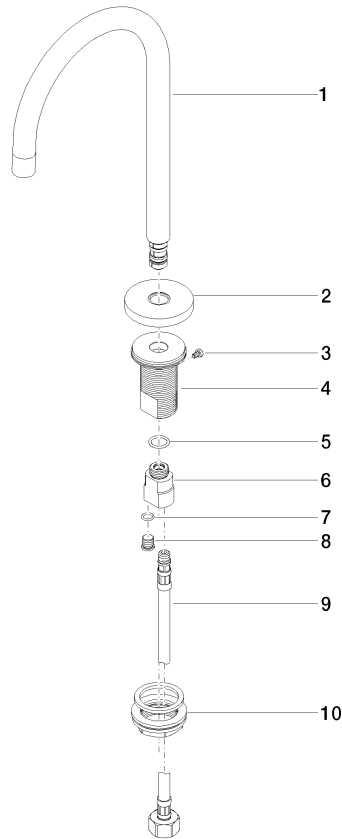
---

WRAS\_1909

LGA\_29

GDV\_0400

**Product version from 3/13/2017**





Deck-mounted basin spout without pop-up waste - Chrome

TARA

13 716 882

Spare parts list

Product version from 3/13/2017

No.	Item Number	Name	Quantity used	Delivery time
	90 28 22 319 00-00	spout	10	10