

Deck-mounted basin spout without pop-up waste - Dark Chrome

TARA




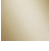


13 716 882



Fits: TARA, META

- 166mm projection
- pivotable spout 360°
- circular, air-enriched flow
- height of mixer 285 mm
- height up to aerator 163 mm
- hole diameter 35 mm
- rosette Ø 60 mm
- 2x screw-in M 10 x 1 pressure hose, leak-tested
- 1/2" connection
- max. flow 7 l/min
- lead-free
- This product can help a building meet the requirements of Green Building Rating Systems, e.g. LEED®, BREEAM®, DGNB
- WRAS 1909064

For Touchfree control please order eSet Touchfree
WITH or WITHOUT temperature adjustment

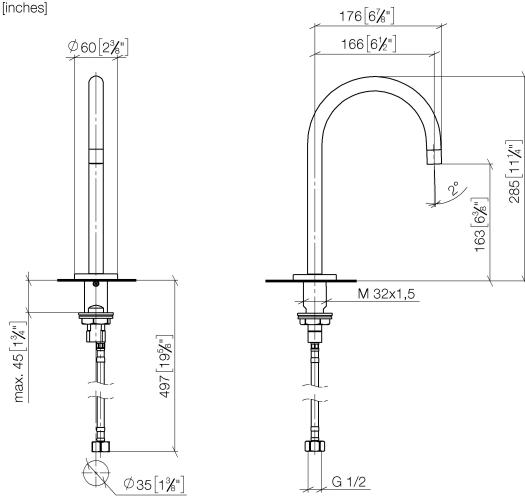
| | | |
|--|-------------------------------------|---------------|
|  | Dark Chrome | 13 716 882-19 |
|  | Chrome | 13 716 882-00 |
|  | Brushed Durabronze (23kt Gold) | 13 716 882-28 |
|  | Brushed Bronze | 13 716 882-42 |
|  | Brushed Champagne (22kt Gold) | 13 716 882-46 |
|  | Champagne (22kt Gold) | 13 716 882-47 |
|  | Brushed Chrome | 13 716 882-93 |
|  | Brushed Dark Platinum | 13 716 882-99 |

Deck-mounted basin spout without pop-up waste - Dark Chrome

TARA

13 716 882

mm [inches]



Flow rate chart



Codes & Standards

Executive Order
no. 1007



Deck-mounted basin spout without pop-up waste - Dark Chrome

TARA

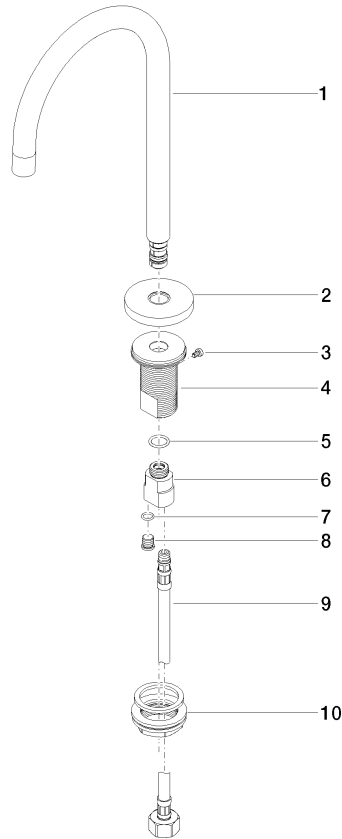
13 716 882

Certificates

GDV_0400

13 716 882

Parts for other
finishes can be found
here: [Chrome](#)





Deck-mounted basin spout without pop-up waste - Dark Chrome

TARA

13 716 882

Spare parts list