

## Deck-mounted basin spout without pop-up waste - Brushed Chrome

TARA

13 716 882



Fits: TARA, META

- 166mm projection
- pivotable spout 360°
- circular, air-enriched flow
- height of mixer 285 mm
- height up to aerator 163 mm
- hole diameter 35 mm
- rosette Ø 60 mm
- 2x screw-in M 10 x 1 pressure hose, leak-tested
- 1/2" connection
- max. flow 7 l/min
- lead-free
- This product can help a building meet the requirements of Green Building Rating Systems, e.g. LEED®, BREEAM®, DGNB
- WRAS 1909064

For Touchfree control please order eSet Touchfree  
WITH or WITHOUT temperature adjustment

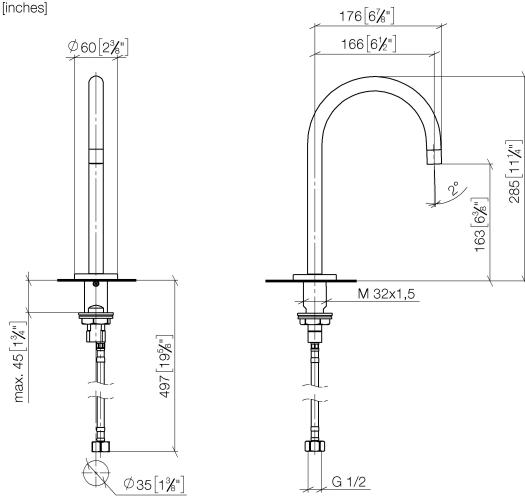
	Brushed Chrome	13 716 882-93
	Chrome	13 716 882-00
	Dark Chrome	13 716 882-19
	Brushed Durabronze (23kt Gold)	13 716 882-28
	Brushed Bronze	13 716 882-42
	Brushed Champagne (22kt Gold)	13 716 882-46
	Champagne (22kt Gold)	13 716 882-47
	Brushed Dark Platinum	13 716 882-99

## Deck-mounted basin spout without pop-up waste - Brushed Chrome

TARA

13 716 882

mm [inches]



### Flow rate chart



### Codes & Standards

Executive Order  
no. 1007



## Deck-mounted basin spout without pop-up waste - Brushed Chrome

---

TARA

13 716 882

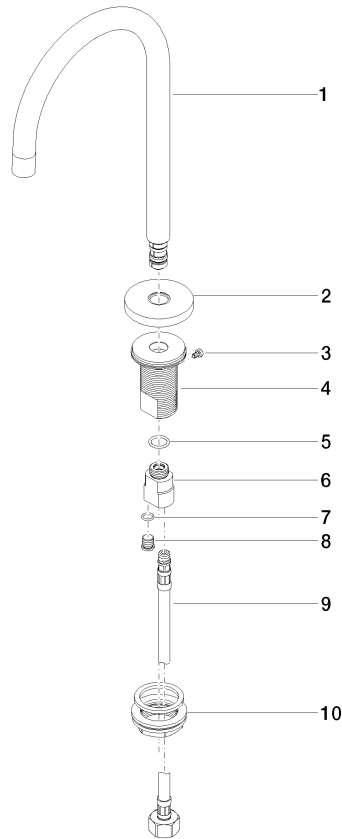
Certificates

---

GDV\_0400

**Product version from 3/13/2017**

Parts for other  
finishes can be found  
here: [Chrome](#)





Deck-mounted basin spout without pop-up waste - Brushed Chrome

TARA

13 716 882

Spare parts list

Product version from 3/13/2017

No.	Item Number	Name	Quantity used	Delivery time
	90 28 22 319 00-93	spout	10	20