

## TARA Bath spout for wall mounting - Brushed Chrome

TARA

13 801 892

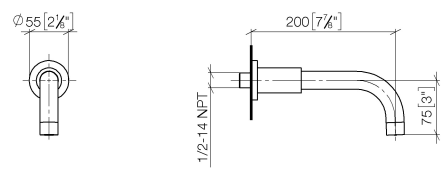


- 200mm projection
- circular normal flow
- rosette Ø 55 mm
- hole diameter 37 mm
- 1/2" connection
- max. flow 29 l/min at 3 bar flow pressure
- WRAS 1811020

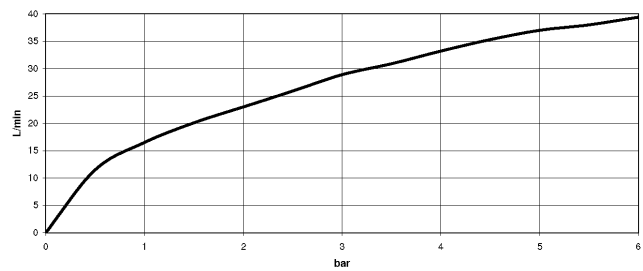
	Brushed Chrome	13 801 892-93
	Chrome	13 801 892-00
	Brushed Platinum	13 801 892-06
	Platinum	13 801 892-08
	Dark Chrome	13 801 892-19
	Brushed Durabronze (23kt Gold)	13 801 892-28
	Matte Black	13 801 892-33
	Brushed Bronze	13 801 892-42
	Brushed Champagne (22kt Gold)	13 801 892-46
	Champagne (22kt Gold)	13 801 892-47
	Brushed Dark Platinum	13 801 892-99

13 801 892

mm [inches]



Flow rate chart



Codes & Standards

ASME A112.18.1	cUPC	DIN 4109	ISO 3822
Scottish Water Byelaws	UK Water Supply Regulations	Ü-Zeichen	



## TARA Bath spout for wall mounting - Brushed Chrome

---

TARA

13 801 892

### Certificates

---

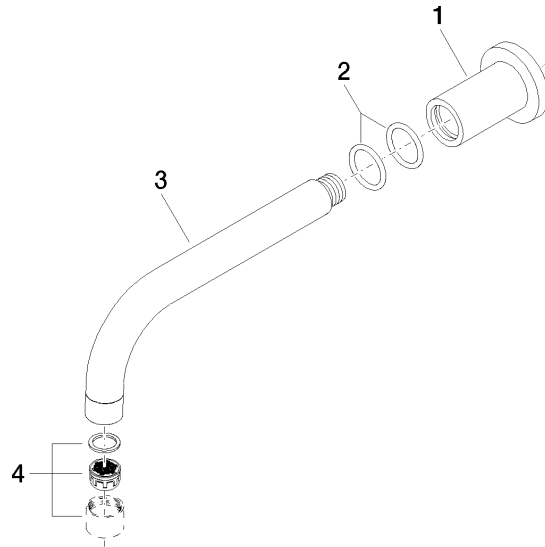
IAPMO\_4976

WRAS\_1811

LGA\_18

**Product version from 4/1/2024**

Parts for other  
finishes can be found  
here: [Chrome](#)





## TARA Bath spout for wall mounting - Brushed Chrome

TARA

13 801 892

### Spare parts list

#### Product version from 4/1/2024

No.	Item Number	Name	Quantity used	Delivery time
	09 27 89 009-93	rosette	5	20