

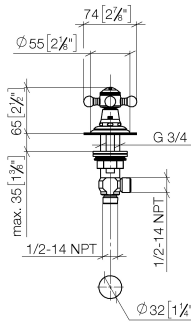
20 000 360



- hole diameter 32 mm
- rosette Ø 55 mm
- supplied with porcelain inserts for both HOT and COLD
- WRAS 1810004

20 000 360

mm [inches]



Flow rate chart



Codes & Standards

Scottish Water
Byelaws

UK Water Supply
Regulations



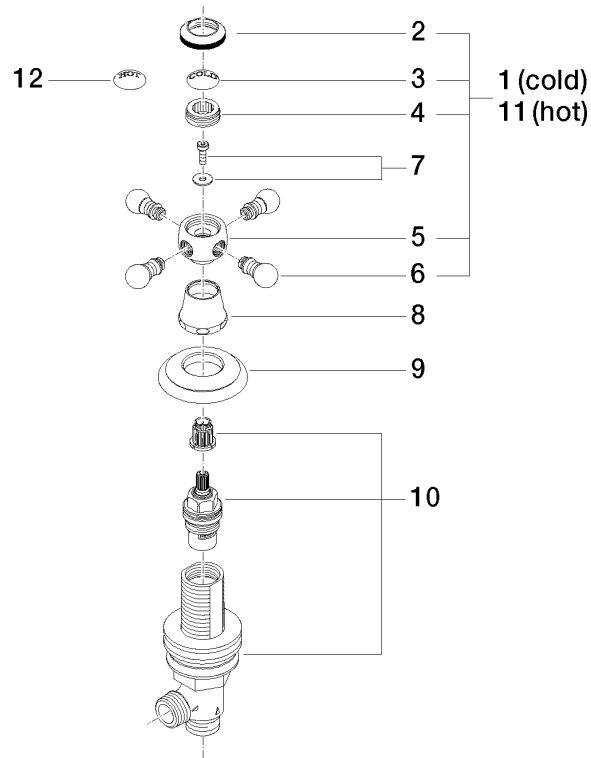
MADISON Deck valve clockwise closing cold or hot - Brushed Platinum

MADISON

20 000 360

Certificates

WRAS_1810





MADISON Deck valve clockwise closing cold or hot - Brushed Platinum

MADISON

20 000 360

Spare parts list

No.	Item Number	Name	Quantity used	Delivery time
	04 20 36 002 06-06	handle (cold)	15	10