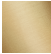

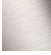



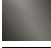



MADISON Three-hole basin mixer with pop-up waste - Brushed Durabrass (23kt Gold)
MADISON

20 700 360	Product version from 7/31/2009		
	<ul style="list-style-type: none"> <li>135mm projection</li> <li>fixed spout</li> <li>circular, air-enriched flow</li> <li>height of mixer 72 mm</li> <li>height up to aerator 40 mm</li> <li>hole diameter valve 32 mm</li> <li>hole diameter spout 35 mm</li> <li>without rosette</li> <li>2x 1/2" x 1/2" high pressure hose</li> <li>max. flow 7 l/min</li> <li>lead-free</li> <li>This product can help a building meet the requirements of Green Building Rating Systems, e.g. LEED®, BREEAM®, DGNB</li> <li>WRAS</li> </ul>	<div>  <div> Brushed Durabrass (23kt Gold) 20 700 360-28 </div> </div>	
		<div>  <div> Chrome 20 700 360-00 </div> </div>	
		<div>  <div> Brushed Platinum 20 700 360-06 </div> </div>	
		<div>  <div> Platinum 20 700 360-08 </div> </div>	
		<div>  <div> Durabrass (23kt Gold) 20 700 360-09 </div> </div>	
		<div>  <div> Brushed Dark Brass 20 700 360-39 </div> </div>	
		<div>  <div> Brushed Dark Platinum 20 700 360-99 </div> </div>	

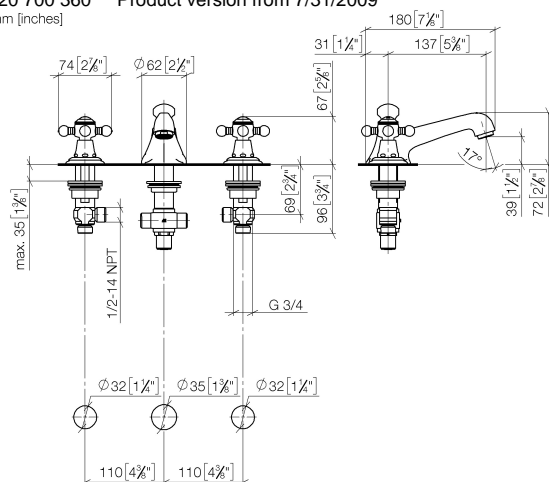
Recommended miscellaneous

	<div>  <div> <b>High pressure hoses -</b>  •2x 3/8" x 1/2" x 500mm high pressure hose </div> </div>	12 506 970 90
--	--	---------------

# MADISON Three-hole basin mixer with pop-up waste - Brushed Durabronz (23kt Gold)

MADISON

20 700 360 Product version from 7/31/2009  
mm [inches]



## Flow rate chart



## Codes & Standards

DIN 4109

EN 200

Executive Order  
no. 1007

ISO 3822

Scottish Water  
Byelaws

UK Water Supply  
Regulations

Ü-Zeichen

VA-Zeichen



MADISON Three-hole basin mixer with pop-up waste - Brushed Durabrass  
(23kt Gold)

MADISON

20 700 360    Product version from 7/31/2009

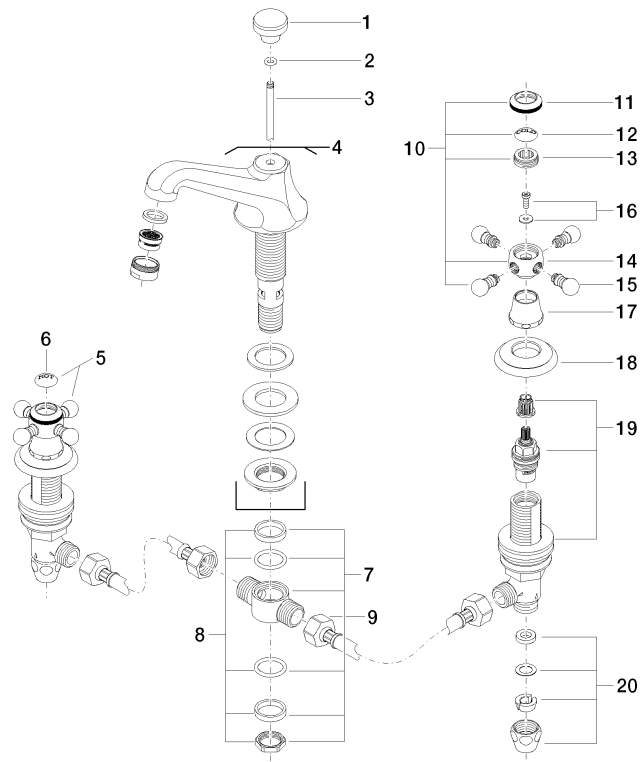
Certificates and sustainability

GDV_0400	ETA_17	LGA_8	WRAS_240602
----------	--------	-------	-------------

# MADISON Three-hole basin mixer with pop-up waste - Brushed Durabrass (23kt Gold)

MADISON

20 700 360 Product version from 7/31/2009



21 ————— Ablaufgarnitur 04.11.01.001.00.FP