

TARA Three-hole basin mixer with pop-up waste - Matte Black

TARA

20 705 882 Product version from 4/1/2024



- 166mm projection
- pivotable spout 360°
- circular, air-enriched flow
- height of mixer 145 mm
- height up to aerator 65 mm
- hole diameter valve 32 mm
- hole diameter spout 35 mm
- rosette Ø 55 mm
- 2x screw-in M 10 x 1 pressure hose, leak-tested
- max. flow 5.7 l/min
- lead-free
- This product can help a building meet the requirements of Green Building Rating Systems, e.g. LEED®, BREEAM®, DGNB
- WRAS

Only suitable for basins with an overflow.

	Matte Black	20 705 882-33
	Chrome	20 705 882-00
	Brushed Platinum	20 705 882-06
	Platinum	20 705 882-08
	Dark Chrome	20 705 882-19
	Brushed Durabronze (23kt Gold)	20 705 882-28
	Brushed Dark Brass	20 705 882-39
	Brushed Bronze	20 705 882-42
	Brushed Champagne (22kt Gold)	20 705 882-46
	Champagne (22kt Gold)	20 705 882-47
	Brushed Chrome	20 705 882-93
	Brushed Dark Platinum	20 705 882-99



TARA Three-hole basin mixer with pop-up waste - Matte Black

TARA

20 705 882 Product version from 4/1/2024

Certificates and sustainability

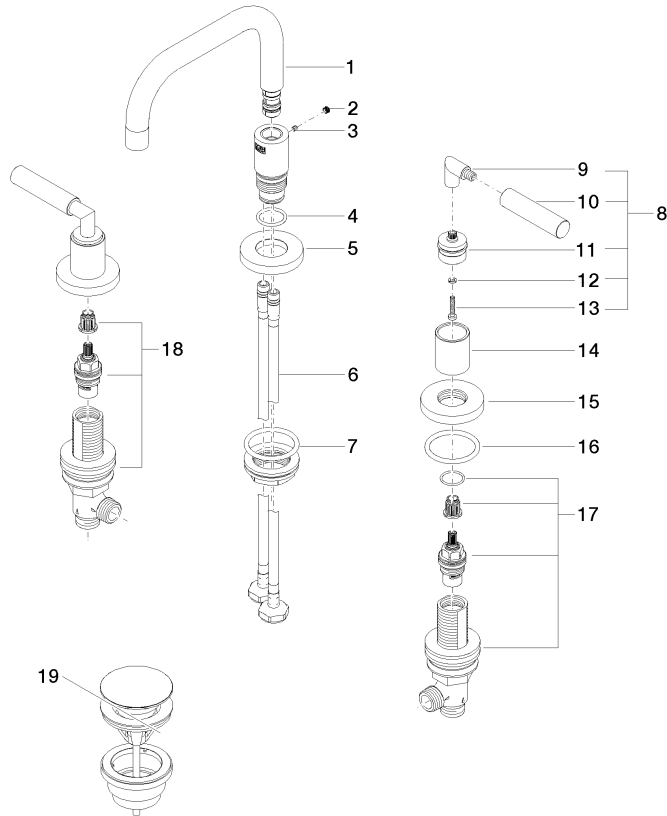
LGA_38

GDV_0400

WRAS_2303

20 705 882 Product version from 4/1/2024

Parts for other
finishes can be found
here: [Chrome](#)



Spare parts list

No.	Item Number	Name	Quantity used	Delivery time
	4 09 14 10 015 90	seal	1.00	2
	6 04 30 04 019 00 90	hose	2.00	2
	3 09 31 11 099 90	pin	1.00	2
	7 04 23 10 009 02 90	fixing set	1.00	2
	14 09 21 02 140-33	sleeve	2.00	30
	17 90 17 11 040 50 90	side panel	1.00	2
	11 90 12 12 219 00-33	base	2.00	30
	5 09 28 10 140-33	ring	1.00	2
	15 09 27 89 105-33	rosette	2.00	30
	10 09 20 88 052-33	handle	2.00	30
	18 90 17 11 040 51 90	side panel	1.00	2
	9 04 18 20 022 00-33	angle	2.00	30
	19 10 125 970-33	Basin Waste with push fastening 1 1/4" - Matte Black	1.00	2
	8 04 20 88 052 10-33	handle	2.00	60
	1 90 28 22 370 00-33	spout	1.00	30
	13 90 30 30 075 00 90	screw	2.00	2
	2 90 31 20 109 00 90	plug	1.00	2
	12 90 30 11 029 00 90	disc	2.00	2
	16 90 14 10 043 00 90	seal	2.00	2