

CYO Three-hole basin mixer with pop-up waste without design element - Platinum / Brushed Platinum



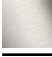




CYO

20 710 811



- 133mm projection
- fixed spout
- rectangular, air-enriched flow
- height of mixer 180 mm
- height up to aerator 128 mm
- hole diameter spout 35 mm
- hole diameter valve 32 mm
- handle Ø 60mm
- max. flow 4.5 l/min
- lead-free
- This product can help a building meet the requirements of Green Building Rating Systems, e.g. LEED®, BREEAM®, DGNB
- WRAS

NOTE: The handle inserts must be ordered separately from the fittings!

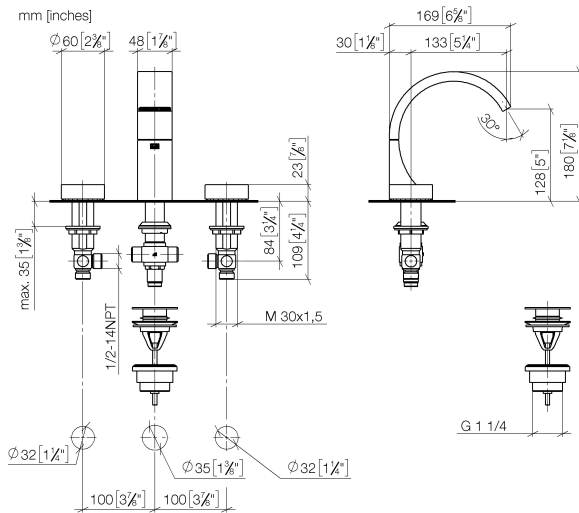
	Platinum / Brushed Platinum	20 710 811-36
	Chrome	20 710 811-00
	Brushed Platinum	20 710 811-06
	Dark Chrome	20 710 811-19
	Brushed Durabronze (23kt Gold)	20 710 811-28
	Durabronze / Brushed Durabronze (23kt Gold)	20 710 811-38
	Brushed Dark Platinum	20 710 811-99

CYO Three-hole basin mixer with pop-up waste without design element - Platinum / Brushed Platinum

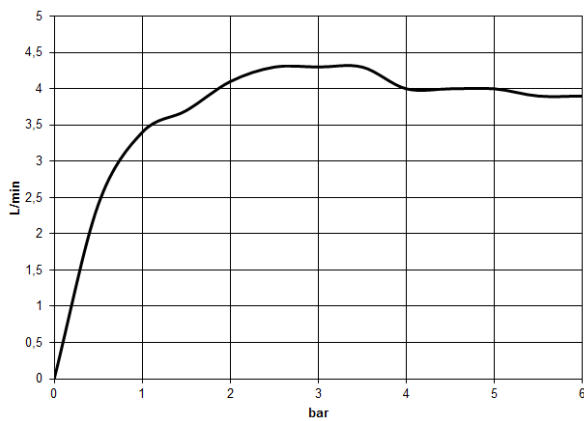
CYO

20 710 811

mm [inches]



Flow rate chart



Codes & Standards

DIN 4109

ISO 3822

Scottish Water
Byelaws

UK Water Supply
Regulations

Ü-Zeichen



CYO Three-hole basin mixer with pop-up waste without design element - Platinum / Brushed Platinum

CYO

20 710 811

Certificates and sustainability

WRAS_2111

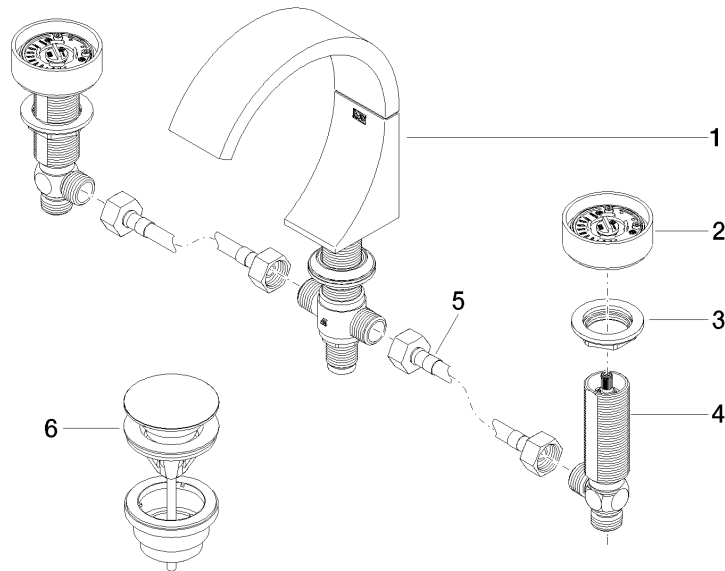
LGA_38

CYO Three-hole basin mixer with pop-up waste without design element - Platinum / Brushed Platinum

CYO

20 710 811

Parts for other
finishes can be found
here: [Chrome](#)



Spare parts list

No.	Item Number	Name	Quantity used	Delivery time
6	10 125 970-36	pop-up waste	1.00	-
Spare part can no longer be ordered, please order the replacement item				
3	04 30 11 038 67 90	fixing set	2.00	2
2	90 18 40 290 00-36	handle	2.00	20
4	04 17 11 055 61 90	side panel	2.00	2
1	13 715 811-36	CYO Deck-mounted basin spout without pop-up waste - Platinum / Brushed Platinum	1.00	20
5	04 30 04 096 00 90	hose	2.00	2