

TARA Three-hole mixer - Dark Chrome

TARA

20 815 892



- 235mm projection
- pivotable spout 360°
- air-enriched flow
- height of mixer 370 mm
- height up to aerator 212 mm
- hole diameter spout 35 mm
- hole diameter valve 32 mm
- max. flow 7 l/min at 3 bar flow pressure
- lead-free
- This product can help a building meet the requirements of Green Building Rating Systems, e.g. LEED®, BREEAM®, DGNB

| | | |
|---|-------------------------------|---------------|
|  | Dark Chrome | 20 815 892-19 |
|  | Chrome | 20 815 892-00 |
|  | Brushed Platinum | 20 815 892-06 |
|  | Platinum | 20 815 892-08 |
|  | Durabrass (23kt Gold) | 20 815 892-09 |
|  | Brushed Durabrass (23kt Gold) | 20 815 892-28 |
|  | Matte Black | 20 815 892-33 |
|  | Brushed Champagne (22kt Gold) | 20 815 892-46 |
|  | Champagne (22kt Gold) | 20 815 892-47 |
|  | Brushed Chrome | 20 815 892-93 |
|  | Brushed Dark Platinum | 20 815 892-99 |

Recommended miscellaneous

Dispenser with rosette - Dark Chrome 82 444 970-19



Recommended miscellaneous

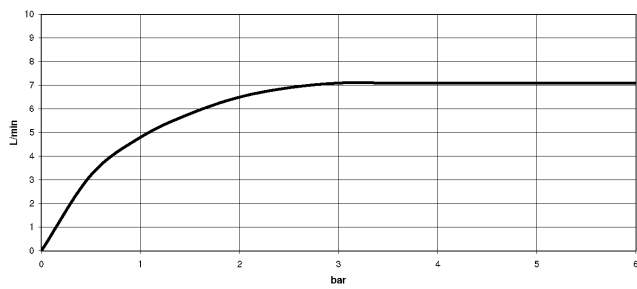
Strainer waste with control handle - Dark Chrome 10 710 970-19



Recommended miscellaneous

Dispenser with rosette - Dark Chrome 82 444 970-19





GDV_0400289.

20 815 892

Parts for other
finishes can be found
here: [Chrome](#)

