

## TARA Single-hole basin mixer with pop-up waste - Platinum

TARA

22 513 892 Product version from 6/30/2009 to 5/27/2021



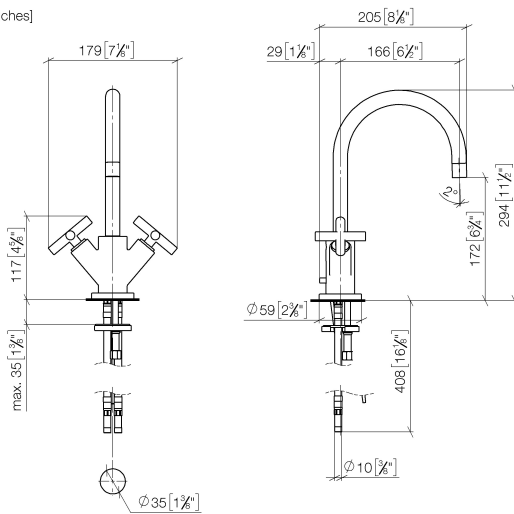
- 165mm projection
- pivotable spout 360°
- circular, air-enriched flow
- height of mixer 295 mm
- height up to aerator 172 mm
- hole diameter 35 mm
- rosette Ø 59 mm
- 2x screw-in M 10 x 1 pressure hose, leak-tested
- max. flow 7 l/min
- lead-free
- This product can help a building meet the requirements of Green Building Rating Systems, e.g. LEED®, BREEAM®, DGNB
- WRAS

Only suitable for basins with an overflow.

	Platinum	22 513 892-08
	Chrome	22 513 892-00
	Brushed Platinum	22 513 892-06
	Dark Chrome	22 513 892-19
	Brushed Durabronze (23kt Gold)	22 513 892-28
	Matte Black	22 513 892-33
	Brushed Dark Brass	22 513 892-39
	Brushed Bronze	22 513 892-42
	Brushed Champagne (22kt Gold)	22 513 892-46
	Champagne (22kt Gold)	22 513 892-47
	Brushed Chrome	22 513 892-93
	Brushed Dark Platinum	22 513 892-99

22 513 892 Product version from 6/30/2009 to 5/27/2021

mm [inches]



### Flow rate chart



### Codes & Standards

DIN 4109	EN 200	Executive Order no. 1007	ISO 3822
Scottish Water Byelaws	UK Water Supply Regulations	Ü-Zeichen	VA-Zeichen



TARA Single-hole basin mixer with pop-up waste - Platinum

TARA

22 513 892    Product version from 6/30/2009 to 5/27/2021

Certificates and sustainability

ETA_18	LGA_18	GDV_0400	WRAS_240702
--------	--------	----------	-------------

# TARA Single-hole basin mixer with pop-up waste - Platinum

TARA

22 513 892 Product version from 6/30/2009 to 5/27/2021

Parts for other  
finishes can be found  
here: [Chrome](#)

