

## VAIA Single-hole basin mixer with stand pipe without pop-up waste - Brushed Dark Brass

VAIA

22 585 809 Product version from 4/1/2025



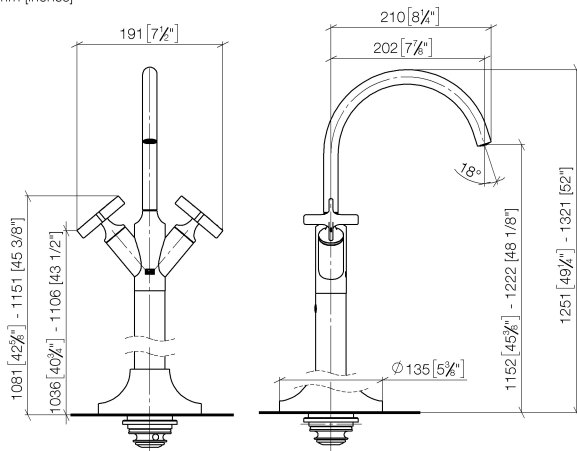
- 202mm projection
- pivotable spout 360°
- circular, air-enriched flow
- total height 1251 - 1321 mm
- height up to aerator 1152 – 1222 mm
- rosette Ø 135 mm
- max. flow 5.7 l/min
- lead-free
- This product can help a building meet the requirements of Green Building Rating Systems, e.g. LEED®, BREEAM®, DGNB
- WRAS

	Brushed Dark Brass	22 585 809-39
	Chrome	22 585 809-00
	Brushed Platinum	22 585 809-06
	Platinum	22 585 809-08
	Dark Chrome	22 585 809-19
	Brushed Durabronze (23kt Gold)	22 585 809-28
	Brushed Bronze	22 585 809-42
	Brushed Champagne (22kt Gold)	22 585 809-46
	Champagne (22kt Gold)	22 585 809-47
	Brushed Dark Platinum	22 585 809-99

## VAIA Single-hole basin mixer with stand pipe without pop-up waste - Brushed Dark Brass

VAIA

22 585 809 Product version from 4/1/2025  
mm [inches]



### Flow rate chart



### Codes & Standards

DIN 4109

ISO 3822

Scottish Water  
Byelaws

UK Water Supply  
Regulations

### Ü-Zeichen



## VAIA Single-hole basin mixer with stand pipe without pop-up waste - Brushed Dark Brass

VAIA

---

22 585 809 Product version from 4/1/2025

Certificates and sustainability

---

LGA\_38

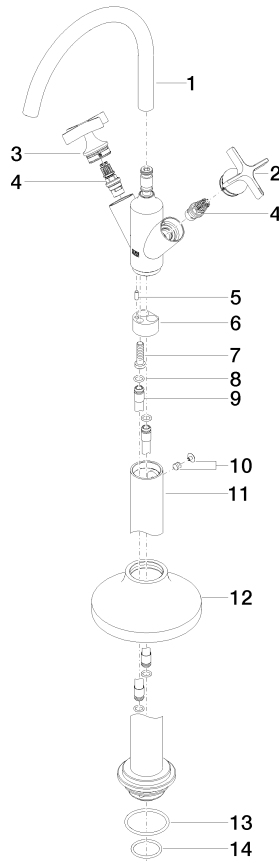
WRAS\_240102

## VAIA Single-hole basin mixer with stand pipe without pop-up waste - Brushed Dark Brass

VAIA

22 585 809 Product version from 4/1/2025

Parts for other  
finishes can be found  
here: [Chrome](#)



### Spare parts list

No.	Item Number	Name	Quantity used	Delivery time
1	90 28 22 313 00-39	spout	1.00	30
12	90 27 80 033 00-39	rosette	1.00	30
10	04 31 11 002 00 90	pin	1.00	2
4	90 90 03 175 00 90	top	2.00	2
13	09 14 10 084 90	seal	1.00	2
8	09 14 10 139 90	seal	4.00	2
5	09 31 11 040 90	pin	1.00	2
11	04 28 22 028 00-39	pipe	1.00	60
6	09 24 03 193 90	adaptor	1.00	2
7	09 30 30 047 90	screw	1.00	2
2	90 20 66 028 00-39	handle ( cold )	1.00	30
9	04 28 22 022 10 90	connection	2.00	2
14	09 14 10 018 90	seal	1.00	2
3	90 20 66 029 01-39	handle ( hot )	1.00	30