

## TARA Single-hole mixer - Platinum

TARA

22 815 892



- 235mm projection
- pivotable spout 360°
- air-enriched flow
- height of mixer 378 mm
- height up to aerator 220 mm
- hole diameter 35 mm
- max. flow 7 l/min at 3 bar flow pressure
- lead-free
- This product can help a building meet the requirements of Green Building Rating Systems, e.g. LEED®, BREEAM®, DGNB

|   |                                |               |
|---|--------------------------------|---------------|
|    | Platinum                       | 22 815 892-08 |
|    | Chrome                         | 22 815 892-00 |
|    | Brushed Platinum               | 22 815 892-06 |
|    | Durabronze (23kt Gold)         | 22 815 892-09 |
|    | Dark Chrome                    | 22 815 892-19 |
|    | Brushed Durabronze (23kt Gold) | 22 815 892-28 |
|    | Matte Black                    | 22 815 892-33 |
|    | Brushed Champagne (22kt Gold)  | 22 815 892-46 |
|    | Champagne (22kt Gold)          | 22 815 892-47 |
|   | Brushed Chrome                 | 22 815 892-93 |
|  | Brushed Dark Platinum          | 22 815 892-99 |

### Recommended miscellaneous

**Strainer waste with control handle - Platinum** 10 710 970-08



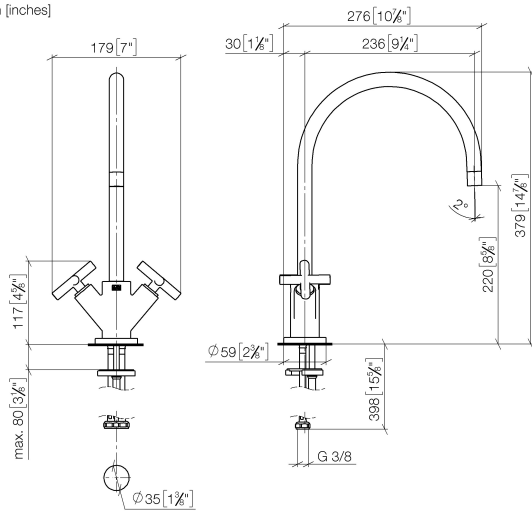
### Recommended miscellaneous

**Dispenser with rosette - Platinum** 82 444 970-08



22 815 892

mm [inches]



### Flow rate chart

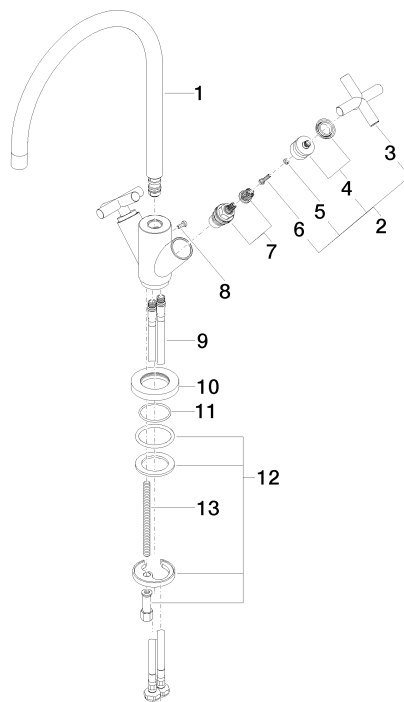


### Certificates

ETA\_18512.      LGA\_19169.      WRAS\_1810003.      GDV\_0400194.

22 815 892

Parts for other  
finishes can be found  
here: [Chrome](#)



## Spare parts list

| No. | Item Number        | Name       | Quantity used | Delivery time |
|-----|--------------------|------------|---------------|---------------|
| 1   | 90 28 22 226 01-08 | spout      | 1             | 40            |
| 2   | 90 20 89 010 10-08 | handle     | 2             | 40            |
| 3   | 09 20 89 010-08    | handle     | 2             | 60            |
| 4   | 90 12 12 007 00-08 | base       | 2             | 40            |
| 5   | 90 30 11 029 00 90 | disc       | 2             | 2             |
| 6   | 90 30 30 075 00 90 | screw      | 2             | 2             |
| 7   | 90 90 03 151 00 90 | top        | 2             | 2             |
| 8   | 09 30 30 054 90    | screw      | 1             | 2             |
| 9   | 04 30 04 104 00 90 | hose       | 2             | 2             |
| 10  | 09 28 10 132-08    | ring       | 1             | 40            |
| 11  | 09 14 10 134 90    | seal       | 1             | 2             |
| 12  | 04 30 11 038 00 90 | fixing set | 1             | 2             |
| 13  | 09 31 11 012 90    | pin        | 1             | 2             |