

## LULU Single-lever bath mixer with stand pipe for free-standing assembly with hand shower set - Brushed Platinum

LULU

25 863 710



- spout: circular, air-enriched flow
- max. flow 26.4 l/min at 3 bar flow pressure
- Hand shower: COMPACT RAIN, max. flow rate 6.8 l/min (at 3 bar)
- bar-type hand shower with anti-scale system
- wall bracket
- automatic bath/shower diverter
- 215mm projection
- total height 932 - 1002 mm
- stand pipe height 598 - 668 mm
- height up to aerator 825 – 895 mm
- push-on rosette 131 x 131 mm
- metal shower hose 1250mm with integrated anti-twist protection
- WRAS 2003006

**Intrinsic protection against back flow.**

Intrinsic protection against back flow.



Brushed Platinum

25 863 710-06



Chrome

25 863 710-00

### Required miscellaneous



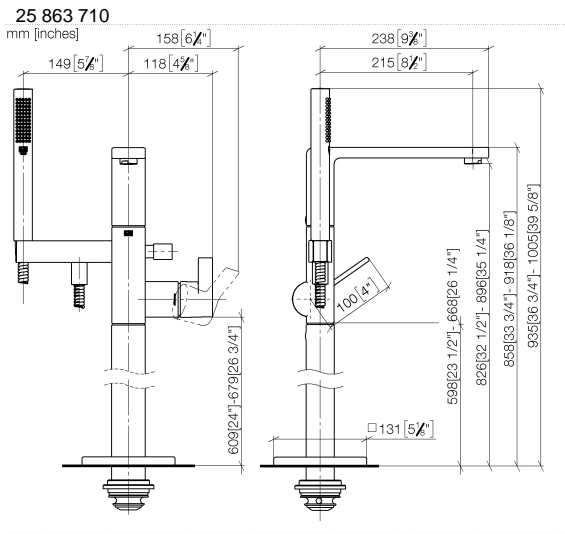
**Concealed floor mounting -**

- max. recess depth 150 mm
- min. recess depth 80 mm

35 945 970 90

## LULU Single-lever bath mixer with stand pipe for free-standing assembly with hand shower set - Brushed Platinum

LULU



Flow rate chart



### Codes & Standards

ASME A112.18.1	cUPC	DIN 4109	EN 1717
ISO 3822	Scottish Water Byelaws	UK Water Supply Regulations	Ü-Zeichen



LULU Single-lever bath mixer with stand pipe for free-standing assembly with  
hand shower set - Brushed Platinum

---

LULU

25 863 710

Certificates

---

IAPMO\_4976

Belgaqua\_19\_77

WRAS\_2003

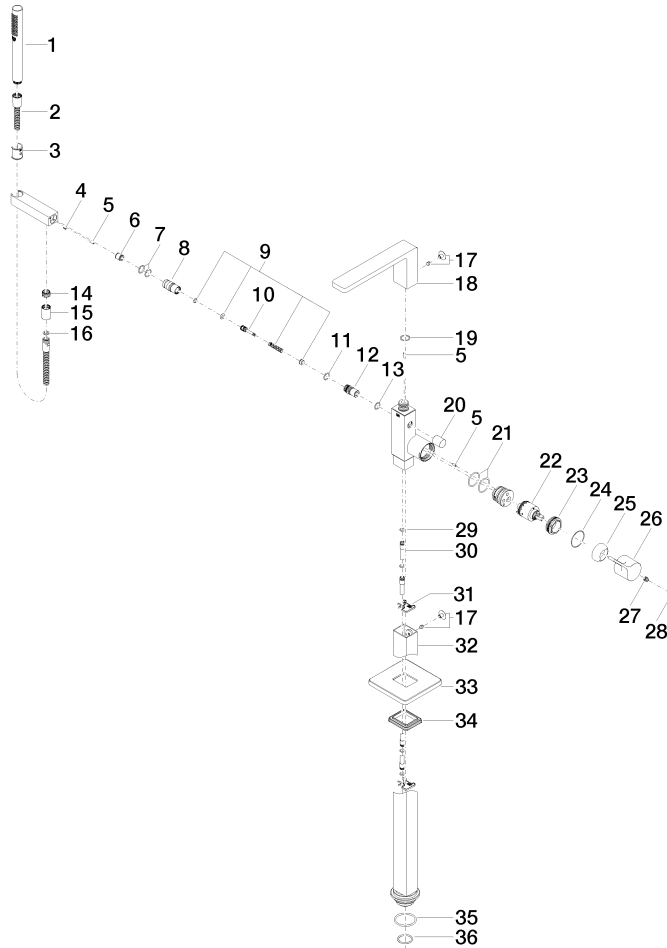
LGA\_29

Belgaqua\_24-003-2

**LULU Single-lever bath mixer with stand pipe for free-standing assembly with hand shower set - Brushed Platinum**

LULU

25 863 710





LULU Single-lever bath mixer with stand pipe for free-standing assembly with hand shower set - Brushed Platinum

LULU

25 863 710

**Spare parts list**

No.	Item Number	Name	Quantity used	Delivery time
	90 12 11 140 30-06	shower	44	10