

VAIA Single-lever bath mixer with stand pipe for free-standing assembly with hand shower set - Platinum

VAIA

25 863 809



- spout: circular, air-enriched flow
- max. flow 24.6 l/min at 3 bar flow pressure
- Hand shower: COMPACT RAIN, max. flow rate 6.8 l/min (at 3 bar)
- bar-type hand shower with anti-scale system
- 281mm projection
- pivotable spout 360°
- automatic bath/shower diverter
- total height 1057 - 1127 mm
- wall bracket
- stand pipe height 565 - 635 mm
- height up to aerator 925 – 995 mm
- slide-on rosettes Ø 135 mm
- metal shower hose 1250mm with integrated anti-twist protection
- WRAS 2001027

Intrinsic protection against back flow.

Intrinsic protection against back flow.

	Platinum	25 863 809-08
	Chrome	25 863 809-00
	Brushed Platinum	25 863 809-06
	Dark Chrome	25 863 809-19
	Brushed Durabronze (23kt Gold)	25 863 809-28
	Brushed Champagne (22kt Gold)	25 863 809-46
	Champagne (22kt Gold)	25 863 809-47
	Brushed Dark Platinum	25 863 809-99

Required miscellaneous



Concealed floor mounting -

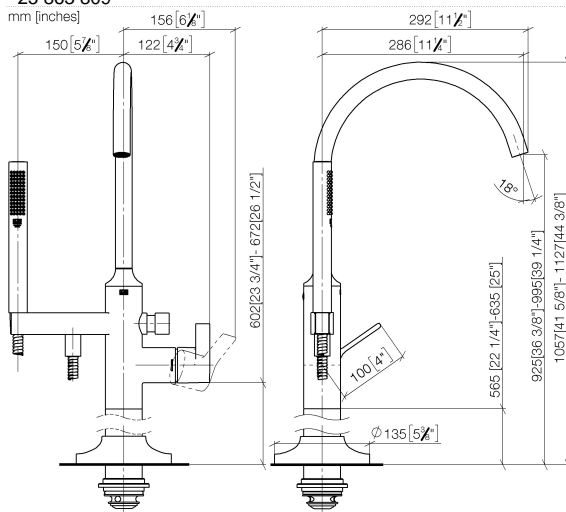
35 945 970 90

- max. recess depth 150 mm
- min. recess depth 80 mm

VAIA Single-lever bath mixer with stand pipe for free-standing assembly with hand shower set - Platinum

VAIA

25 863 809



Flow rate chart



Certificates

Belgaqua_19_77_27. WRAS_2001027.

IAPMO_4976 (2).

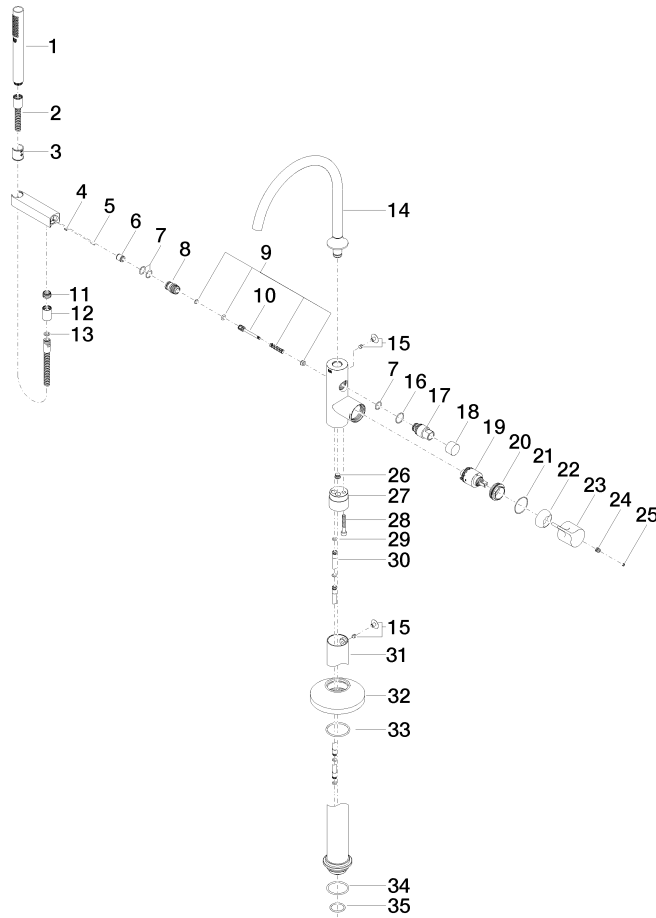
LGA_29727.

Belgaqua_24-003-27_1.

VAIA Single-lever bath mixer with stand pipe for free-standing assembly with hand shower set - Platinum

VAIA

25 863 809



VAIA Single-lever bath mixer with stand pipe for free-standing assembly with hand shower set - Platinum

VAIA

25 863 809

Spare parts list

No.	Item Number	Name	Quantity used	Delivery time
1	90 12 11 140 30-08	shower	1	40
2	90 30 02 072 00-08	Metal shower hose 1/2" x 3/8" x 1250 mm - Platinum	1	40
3	09 18 40 118 90	sleeve	1	2
4	09 31 11 058 90	pin	1	2
5	09 31 11 040 90	pin	1	2
6	90 23 01 141 00 90	back-flow preventer	1	2
7	90 14 10 010 00 90	seal	3	2
8	09 24 03 153 20-08	nipple	1	-
Spare part can no longer be ordered, please order the replacement item				
9	90 16 02 023 00 90	spring	1	2
10	09 31 09 102 20-08	pull-rod	1	-
Spare part can no longer be ordered, please order the replacement item				
11	09 24 03 069 90	nipple	1	2
12	90 21 02 069 00-08	cover	1	40
13	90 14 20 026 00 90	seal	1	2
14	90 28 22 327 00-08	spout	1	40
15	04 31 20 036 00 90	plug	2	2
16	09 14 10 112 90	seal	1	2
17	09 21 34 081 20-08	nipple	1	40
18	09 20 88 002-08	handle	1	40
19	90 15 05 039 00 90	cartridge	1	2
20	09 24 04 298 90	nut	1	2
21	09 14 10 037 90	seal	1	2
22	09 28 30 036-08	cover	1	40
23	09 20 80 022-08	handle	1	40
24	90 31 11 030 00 90	pin	1	2
25	90 31 20 087 00-08	plug	1	40
26	04 31 20 039 11 90	plug	1	2
27	09 24 03 152 20-08	adaptor	1	-
Spare part can no longer be ordered, please order the replacement item				
28	09 30 30 111 90	screw	1	2
29	09 14 10 139 90	seal	2	2
30	04 28 22 025 00 90	connection	2	2
31	04 28 22 030 00-08	pipe	1	40
32	09 27 80 022-08	rosette	1	40
33	90 14 10 129 00 90	seal	1	2
34	09 14 10 084 90	seal	1	2
35	09 14 10 018 90	seal	1	2