

VAIA Single-lever bath mixer with stand pipe for free-standing assembly with hand shower set - Brushed Champagne (22kt Gold)

VAIA

25 863 809



- spout: circular, air-enriched flow
- max. flow 24.6 l/min at 3 bar flow pressure
- Hand shower: COMPACT RAIN, max. flow rate 6.8 l/min (at 3 bar)
- bar-type hand shower with anti-scale system
- 281mm projection
- pivotable spout 360°
- automatic bath/shower diverter
- total height 1057 - 1127 mm
- wall bracket
- stand pipe height 565 - 635 mm
- height up to aerator 925 – 995 mm
- slide-on rosettes Ø 135 mm
- metal shower hose 1250mm with integrated anti-twist protection
- WRAS 2001027

Intrinsic protection against back flow.

Intrinsic protection against back flow.

	Brushed Champagne (22kt Gold)	25 863 809-46
	Chrome	25 863 809-00
	Brushed Platinum	25 863 809-06
	Platinum	25 863 809-08
	Dark Chrome	25 863 809-19
	Brushed Durabronze (23kt Gold)	25 863 809-28
	Brushed Bronze	25 863 809-42
	Champagne (22kt Gold)	25 863 809-47
	Brushed Dark Platinum	25 863 809-99

Required miscellaneous

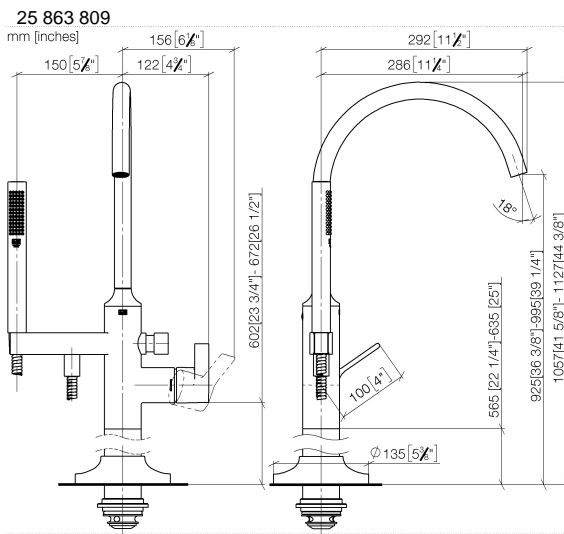


- Concealed floor mounting -**
- max. recess depth 150 mm
 - min. recess depth 80 mm

35 945 970 90

VAIA Single-lever bath mixer with stand pipe for free-standing assembly with hand shower set - Brushed Champagne (22kt Gold)

VAIA



Flow rate chart



Codes & Standards

EN 1717



VAIA Single-lever bath mixer with stand pipe for free-standing assembly with
hand shower set - Brushed Champagne (22kt Gold)

VAIA

25 863 809

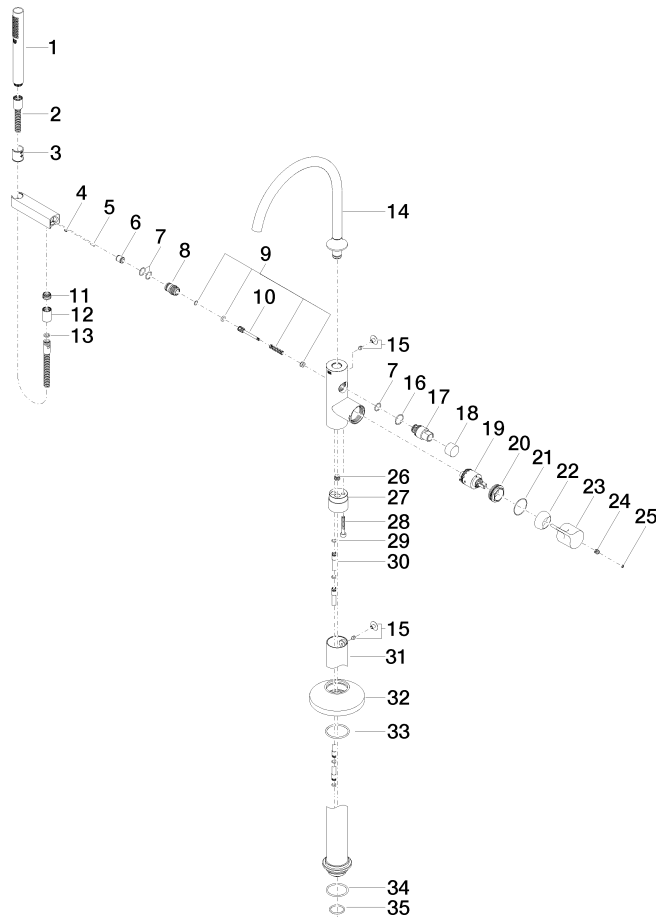
Certificates

Belgaqua_24-003-2

VAIA Single-lever bath mixer with stand pipe for free-standing assembly with hand shower set - Brushed Champagne (22kt Gold)

VAIA

25 863 809





VAIA Single-lever bath mixer with stand pipe for free-standing assembly with
hand shower set - Brushed Champagne (22kt Gold)

VAIA

25 863 809

Spare parts list

No.	Item Number	Name	Quantity used	Delivery time
	90 12 11 140 30-46	shower	40	30