

Shower system with single-lever shower mixer without hand shower - Brushed Light Gold SERIES SPECIFIC

26 024 661 Product version from 10/1/2023



- shower with fixed riser projection 450mm
- pivotable 180°
- overhead shower: rain flow
- rain shower Ø 300 mm
- rain shower with anti-scale system
- max. rainshower flow 14 l/min
- Function from: 10 l/min
- shower holder with rosette Ø 78mm
- slide-on rosettes Ø 55 mm
- 1500 mm metal shower hose
- height of fittings up to top edge of elbow 2280mm
- height of fittings up to rain shower (bottom edge) 1940mm
- automatic diverter for fixed-riser shower/hand shower
- Pipe diameter 20 mm
- quick clearing
- WRAS

This article does not include a hand shower!

Water carrying concealed rough parts on lower wall fixing.

Recommended spacing from bottom edge of shower stem to floor 92 mm.








Intrinsic protection against back flow.

This article does not include a hand shower!

Water carrying concealed rough parts on lower wall fixing.

Recommended spacing from bottom edge of shower stem to floor 92 mm.

Intrinsic protection against back flow.

	Brushed Light Gold	26 024 661-27
	Chrome	26 024 661-00
	Brushed Platinum	26 024 661-06
	Platinum	26 024 661-08
	Dark Chrome	26 024 661-19
	Dark Chrome	26 024 661-19 0010
	Light Gold	26 024 661-26
	Brushed Durabrass (23kt Gold)	26 024 661-28
	Matte Black	26 024 661-33
	Brushed Dark Brass	26 024 661-39
	Brushed Bronze	26 024 661-42
	Brushed Champagne (22kt Gold)	26 024 661-46
	Champagne (22kt Gold)	26 024 661-47
	Brushed Chrome	26 024 661-93
	Brushed Dark Platinum	26 024 661-99

Required miscellaneous



- Concealed wall mounting -**
- min. recess depth 78 mm
 - max. recess depth 103 mm

35 003 970 90

Required miscellaneous



**Hand shower FlowReduce -
Brushed Light Gold**

28 018 979-27
0010

Required miscellaneous



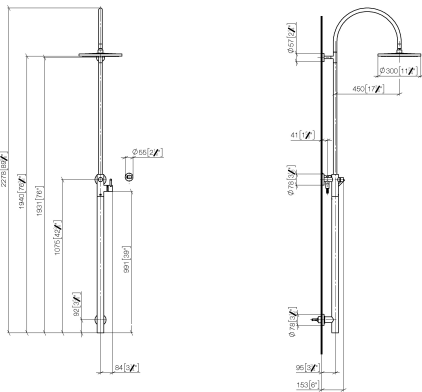
**SERIES-VARIOUS Hand shower
FlowReduce - Brushed Light Gold**

28 029 979-27
0010

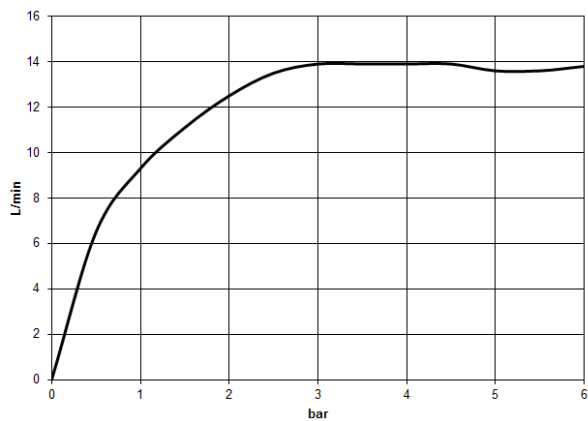
Shower system with single-lever shower mixer without hand shower - Brushed Light Gold SERIES SPECIFIC

26 024 661 Product version from 10/1/2023

mm [inches]



Flow rate chart



Codes & Standards

DIN 4109

ISO 3822

Scottish Water
Byelaws

UK Water Supply
Regulations

Ü-Zeichen



Shower system with single-lever shower mixer without hand shower - Brushed Light Gold SERIES SPECIFIC

26 024 661 Product version from 10/1/2023

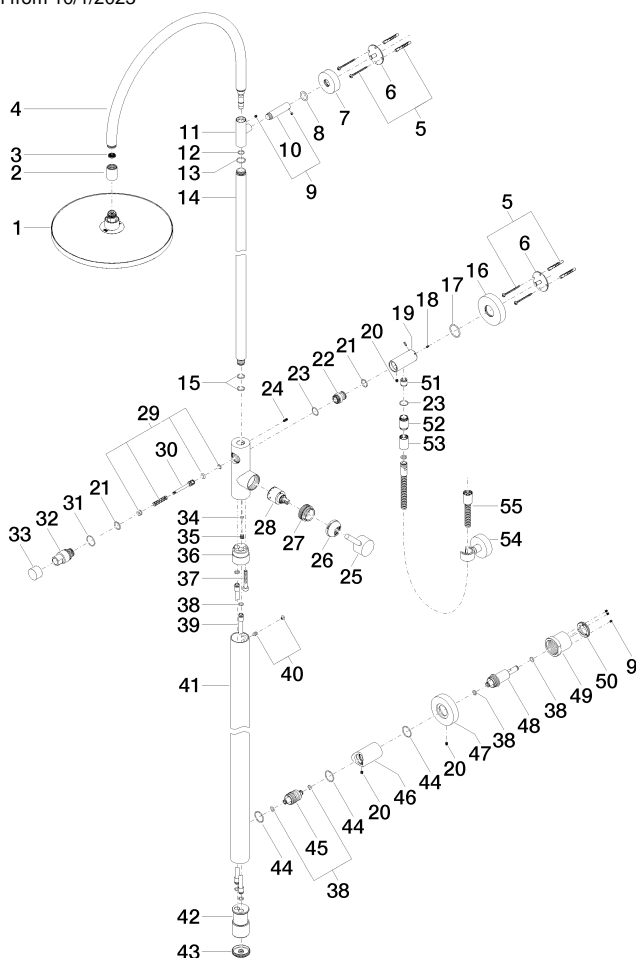
Certificates and sustainability

WRAS_2212

LGA_29

Shower system with single-lever shower mixer without hand shower - Brushed Light Gold SERIES SPECIFIC

26 024 661 Product version from 10/1/2023



Spare parts list

No.	Item Number	Name	Quantity used	Delivery time
36	09 24 03 149 10-27	adaptor	1.00	-
Spare part can no longer be ordered, please order the replacement item				
55	90 30 02 072 00-27	Metal shower hose 1/2" x 3/8" x 1250 mm - Brushed Light Gold	1.00	30
13	09 14 10 122 90	seal	1.00	2
35	09 31 20 027 10-00	plug	1.00	10
51	90 23 01 141 00 90	back-flow preventer	1.00	2
29	90 16 02 023 00 90	spring	1.00	2
46	09 11 10 080 20-27	connection	1.00	60
42	09 17 11 024 20 90	distributor	1.00	60
52	09 24 03 115 20-27	nipple	1.00	60
30	09 31 09 102 20-27	pull-rod	1.00	-
Spare part can no longer be ordered, please order the replacement item				
37	09 30 30 111 90	screw	1.00	2
10	09 11 10 083-27	connection	1.00	60
7	09 27 89 000-27	rosette	1.00	60
15	90 14 10 055 00 90	seal	2.00	2
4	90 28 22 082 00-27	spout	1.00	30
33	09 20 88 002-27	handle	1.00	60
23	90 14 10 032 00 90	seal	2.00	2



Shower system with single-lever shower mixer without hand shower - Brushed Light Gold SERIES SPECIFIC

26 024 661	Product version from 10/1/2023			
12	90 14 10 077 00 90	seal	1.00	2
8	09 14 10 006 90	seal	1.00	2
2	09 24 03 163 20-27	adaptor	1.00	60
21	90 14 10 010 00 90	seal	2.00	2
34	09 14 10 132 90	seal	1.00	2
5	05 30 31 025 00 90	fixing set	2.00	2
16	09 27 88 010-27	rosette	1.00	60
22	09 24 03 162 20 90	nipple	1.00	2
9	90 31 11 030 00 90	pin	1.00	2
50	09 24 77 002 90	nut	1.00	2
39	04 28 22 038 00 90	connection	2.00	2
27	09 24 04 341 90	nut	1.00	60
19	09 11 10 081 20-27	connection	1.00	60
17	09 14 10 101 90	seal	1.00	2
44	90 14 10 063 00 90	seal	3.00	2
41	04 28 22 034 00-27	pipe	1.00	60
24	09 31 11 024 90	pin	1.00	2
47	09 27 88 008-27	rosette	1.00	60
31	09 14 10 112 90	seal	1.00	2
53	90 21 02 069 00-27	cover	1.00	30
28	90 15 05 064 00 90	cartridge	1.00	2
49	09 21 02 128 90	sleeve	1.00	2
38	09 14 10 139 90	seal	6.00	2
18	09 31 11 061 90	pin	2.00	2
1	04 12 05 091 00-27	shower	1.00	60
48	09 24 04 210 10 90	nipple	1.00	2
11	09 17 11 049-27	holder	1.00	60
54	28 050 920-27	holder	1.00	-
Spare part can no longer be ordered, please order the replacement item				
14	04 28 22 134 20-27	pipe	1.00	60
25	90 20 66 017 00-27	handle	1.00	30
40	04 31 20 034 00 90	plug	1.00	2
26	09 28 30 042-27	cover	1.00	60
32	09 21 34 081 20-27	nipple	1.00	60
43	09 21 02 132-27	lid	1.00	60
6	09 30 11 103 90	holder	2.00	2
45	09 24 04 215 20 90	nipple	1.00	2
20	09 31 11 049 90	pin	3.00	2
3	09 23 01 039 90	sieve	1.00	2