

**Shower system with single-lever shower mixer without hand shower**  
**FlowReduce - Brushed Dark Brass**

SERIES SPECIFIC

26 025 661 Product version from 4/1/2024



- shower with fixed riser projection 450mm
- pivotable 180°
- Rain shower: PURE RAIN, max. flow rate 9 l/min (at 3 bar)
- Function from: 7 l/min
- rain shower Ø 300 mm
- rain shower with anti-scale system
- rosette for shower holder Ø 55mm
- slide-on rosettes Ø 55 mm
- 1500 mm metal shower hose
- height of fittings up to top edge of elbow 2280mm
- height of fittings up to rain shower (bottom edge) 1940mm
- automatic diverter for fixed-riser shower/hand shower
- Pipe diameter 20 mm
- quick clearing
- This product can help a building meet the requirements of Green Building Rating Systems, e.g. LEED®, BREEAM®, DGNB

This article does not include a hand shower!

Water carrying concealed rough parts on lower wall fixing.

Recommended spacing from bottom edge of shower stem to floor 92 mm.

Intrinsic protection against back flow.

	Brushed Dark Brass	26 025 661-39
	Chrome	26 025 661-00
	Brushed Platinum	26 025 661-06
	Platinum	26 025 661-08
	Dark Chrome	26 025 661-19
	Light Gold	26 025 661-26
	Brushed Light Gold	26 025 661-27
	Brushed Durabrass (23kt Gold)	26 025 661-28
	Matte Black	26 025 661-33
	Brushed Bronze	26 025 661-42
	Brushed Champagne (22kt Gold)	26 025 661-46
	Champagne (22kt Gold)	26 025 661-47
	Brushed Chrome	26 025 661-93
	Brushed Dark Platinum	26 025 661-99

Shower system with single-lever shower mixer without hand shower  
FlowReduce - Brushed Dark Brass

SERIES SPECIFIC

26 025 661 Product version from 4/1/2024

mm [inches]



### Flow rate chart



## Codes & Standards

DIN 4109

EN 1717

ISO 3822

Ü-Zeichen



## Shower system with single-lever shower mixer without hand shower FlowReduce - Brushed Dark Brass

---

SERIES SPECIFIC

26 025 661 Product version from 4/1/2024

Certificates and sustainability

---

LGA\_29

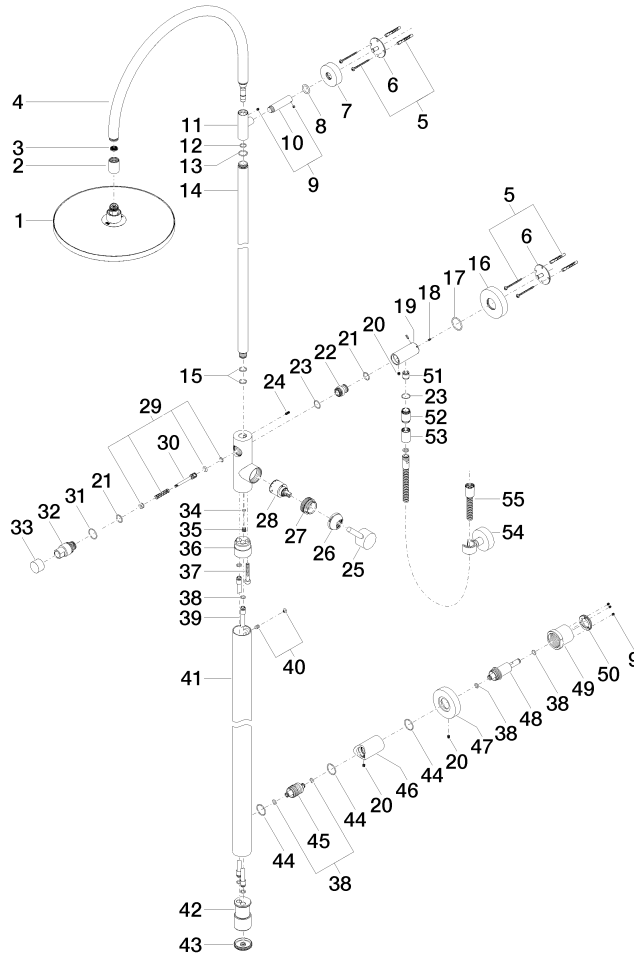
Belgaqua\_24-004-2

# Shower system with single-lever shower mixer without hand shower FlowReduce - Brushed Dark Brass

SERIES SPECIFIC

26 025 661 Product version from 4/1/2024

Parts for other  
finishes can be found  
here: [Chrome](#)



## Spare parts list

No.	Item Number	Name	Quantity used	Delivery time
21	90 14 10 010 00 90	seal	2.00	2
1	90 12 05 091 20-39	shower	1.00	-
Spare part can no longer be ordered, please order the replacement item				
45	09 24 04 215 20 90	nipple	1.00	2
3	09 23 01 039 90	sieve	1.00	2
43	09 21 02 132-39	lid	1.00	60
30	09 31 09 102 20-39	pull-rod	1.00	-
Spare part can no longer be ordered, please order the replacement item				
31	09 14 10 112 90	seal	1.00	2
23	90 14 10 032 00 90	seal	2.00	2
53	90 21 02 069 00-39	cover	1.00	30
24	09 31 11 024 90	pin	1.00	2
14	04 28 22 134 20-39	pipe	1.00	60
11	09 17 11 049-39	holder	1.00	60
36	09 24 03 149 10-39	adaptor	1.00	-
Spare part can no longer be ordered, please order the replacement item				
4	90 28 22 082 00-39	spout	1.00	30
55	90 30 02 072 00-39	hose	1.00	30



## Shower system with single-lever shower mixer without hand shower FlowReduce - Brushed Dark Brass

SERIES SPECIFIC

26 025 661	Product version from 4/1/2024			
35	09 31 20 027 10-39	plug	1.00	-
Spare part can no longer be ordered, please order the replacement item				
6	09 30 11 103 90	holder	2.00	2
12	90 14 10 077 00 90	seal	1.00	2
46	09 11 10 080 20-39	connection	1.00	60
18	09 31 11 061 90	pin	1.00	2
34	09 14 10 132 90	seal	1.00	2
26	09 24 04 107-39	nut	1.00	60
15	90 14 10 055 00 90	seal	2.00	2
38	09 14 10 139 90	seal	6.00	2
52	09 24 03 115 20-39	nipple	1.00	60
44	90 14 10 063 00 90	seal	3.00	2
22	09 24 03 162 20 90	nipple	1.00	2
27	09 24 04 341 90	nut	1.00	60
20	09 31 11 049 90	pin	3.00	2
2	09 24 03 163 20-39	adaptor	1.00	60
54	28 050 920-39	holder	1.00	-
Spare part can no longer be ordered, please order the replacement item				
48	09 24 04 210 10 90	nipple	1.00	2
37	09 30 30 111 90	screw	1.00	2
33	09 20 88 002-39	handle	1.00	60
40	04 31 20 034 00 90	plug	1.00	2
41	04 28 22 034 00-39	pipe	1.00	60
13	09 14 10 122 90	seal	1.00	2
8	09 14 10 006 90	seal	1.00	2
49	09 21 02 128 90	sleeve	1.00	2
25	90 20 66 017 00-39	handle	1.00	30
7	09 27 89 000-39	rosette	1.00	60
39	04 28 22 038 00 90	connection	2.00	2
29	90 16 02 023 00 90	spring	1.00	2
50	09 24 77 002 90	nut	1.00	2
47	09 27 88 008-39	rosette	1.00	60
10	09 11 10 083-39	connection	1.00	60
5	05 30 31 025 00 90	fixing set	2.00	2
17	09 14 10 101 90	seal	1.00	2
28	90 15 05 064 00 90	cartridge	1.00	2
16	09 27 88 010-39	rosette	1.00	60
19	09 11 10 081 20-39	connection	1.00	60
32	09 21 34 081 20-39	nipple	1.00	60
9	90 31 11 030 00 90	pin	5.00	2
51	90 23 01 141 00 90	back-flow preventer	1.00	2
42	09 17 11 024 20 90	distributor	1.00	60