

TARA Showerpipe without hand shower FlowReduce 220 mm - Brushed Dark Brass

TARA

26 633 892 Product version from 4/1/2024



Rain shower:

- rain shower Ø 220 mm
- overhead shower: rain flow
- max. rainshower flow 7 l/min
- Function from: l/min

hand shower:

Control element:

- rotary diverter for fixed-riser shower/hand shower
- 1500 mm metal shower hose

Technical data:

- shower with fixed riser projection 420mm
- height of fittings up to rain shower (bottom edge) 1007mm
- height of fittings up to top edge of elbow 1167mm
- rosette for wall mounting Ø 57mm
- rosette for shower holder Ø 55mm
- rosette for shower mixer Ø 65mm
- Pipe diameter 20 mm
- gauge 150 mm - 13 mm
- 1/2" connection

Notes:

- This product can help a building meet the requirements of Green Building Rating Systems, e.g. LEED®, BREEAM®, DGNB

This article does not include a hand shower!

Intrinsic protection against back flow.

| | | |
|---|--------------------------------|---------------|
|  | Brushed Dark Brass | 26 633 892-39 |
|  | Chrome | 26 633 892-00 |
|  | Brushed Platinum | 26 633 892-06 |
|  | Platinum | 26 633 892-08 |
|  | Dark Chrome | 26 633 892-19 |
|  | Brushed Durabronze (23kt Gold) | 26 633 892-28 |
|  | Matte Black | 26 633 892-33 |
|  | Brushed Bronze | 26 633 892-42 |
|  | Brushed Champagne (22kt Gold) | 26 633 892-46 |
|  | Champagne (22kt Gold) | 26 633 892-47 |
|  | Brushed Chrome | 26 633 892-93 |
|  | Brushed Dark Platinum | 26 633 892-99 |

TARA Showerpipe without hand shower FlowReduce 220 mm - Brushed Dark Brass

TARA

26 633 892 Product version from 4/1/2024
mm [inches]
1:10



Flow rate chart



Codes & Standards

DIN 4109

ISO 3822

Ü-Zeichen



TARA Showerpipe without hand shower FlowReduce 220 mm - Brushed Dark Brass

TARA

26 633 892 Product version from 4/1/2024

Certificates and sustainability

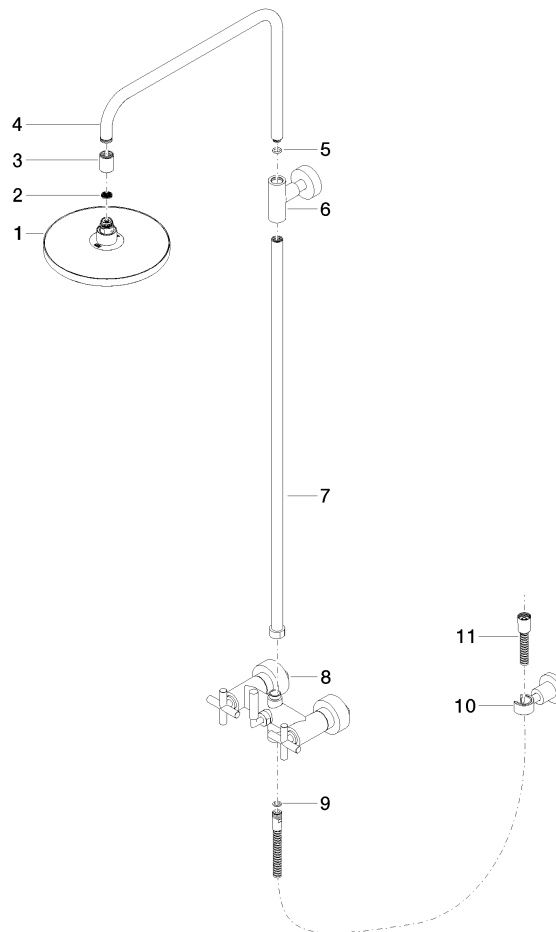
LGA_38

TARA Showerpipe without hand shower FlowReduce 220 mm - Brushed Dark Brass

TARA

26 633 892 Product version from 4/1/2024

Parts for other
finishes can be found
here: [Chrome](#)



Spare parts list

| No. | Item Number | Name | Quantity used | Delivery time |
|--|----------------------|--|---------------|---------------|
| | 11 28 304 970-39 | Metal shower hose 1/2" x 3/8" x 1500 mm - Brushed Dark Brass | 1.00 | 30 |
| | 7 90 28 22 096 00-39 | pipe | 1.00 | 30 |
| | 10 28 050 892-39 | TARA Wall bracket - Brushed Dark Brass | 1.00 | 30 |
| | 6 90 17 11 037 00-39 | holder | 1.00 | 30 |
| | 5 90 14 10 011 00 90 | seal | 1.00 | 2 |
| | 3 09 24 03 177 20-39 | adaptor | 1.00 | 60 |
| | 1 90 12 05 092 20-39 | shower | 1.00 | - |
| Spare part can no longer be ordered, please order the replacement item | | | | |
| | 9 90 14 20 026 00 90 | seal | 1.00 | 2 |
| | 8 04 17 10 020 01-39 | fitting | 1.00 | 60 |
| | 2 09 23 01 039 90 | sieve | 1.00 | 2 |
| | 4 04 28 22 101 20-39 | spout | 1.00 | 60 |