

Hand shower set for bath rim or tile edge installation - Matte White

TARA

27 702 979



Fits: TARA, LISSÉ

- COMPACT RAIN, max. flow rate 6.8 l/min (at 3 bar)
- with anti-scale system
- rosette Ø 50 mm
- hole diameter 32 mm
- metal shower hose 1750mm with integrated anti-twist protection
- WRAS 2209005

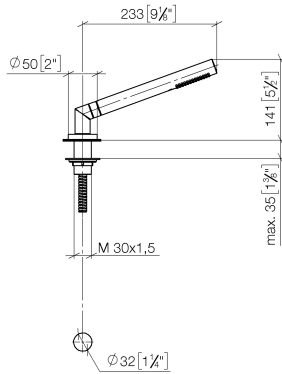
Two-piece design allows hose to later be changed without dismantling the fitting.

Intrinsic protection against back flow.

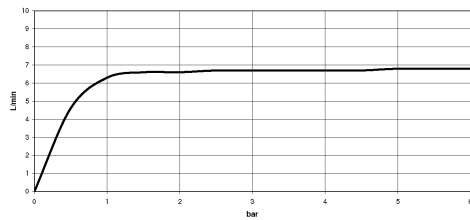
	Matte White	27 702 979-10
	Chrome	27 702 979-00
	Brushed Platinum	27 702 979-06
	Platinum	27 702 979-08
	Durabronze (23kt Gold)	27 702 979-09
	Dark Chrome	27 702 979-19
	Brushed Durabronze (23kt Gold)	27 702 979-28
	Matte Black	27 702 979-33
	Brushed Bronze	27 702 979-42
	Brushed Champagne (22kt Gold)	27 702 979-46
	Champagne (22kt Gold)	27 702 979-47
	Brushed Chrome	27 702 979-93
	Brushed Dark Platinum	27 702 979-99

27 702 979

mm [inches]



Flow rate chart



Codes & Standards

EN 1717

Scottish Water
Byelaws

UK Water Supply
Regulations



Hand shower set for bath rim or tile edge installation - Matte White

TARA

27 702 979

Certificates

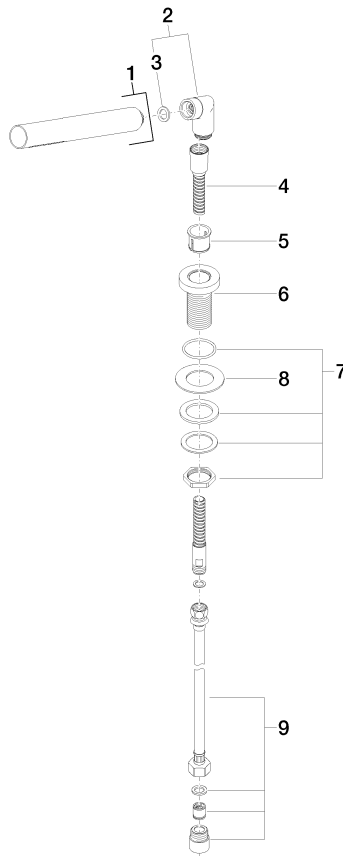
Belgaqua_21-383-2 WRAS_2209

27 702 979

Product version up to 5/15/2020

Product version from 5/15/2020

Parts for other
finishes can be found
here: Chrome





Hand shower set for bath rim or tile edge installation - Matte White

TARA

27 702 979

Spare parts list

Product version up to 5/15/2020

Product version from 5/15/2020

No.	Item Number	Name	Quantity used	Delivery time
	28 019 979-10	Hand shower - Matte White	9	-

Spare part can no longer be ordered, please order the replacement item