
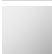



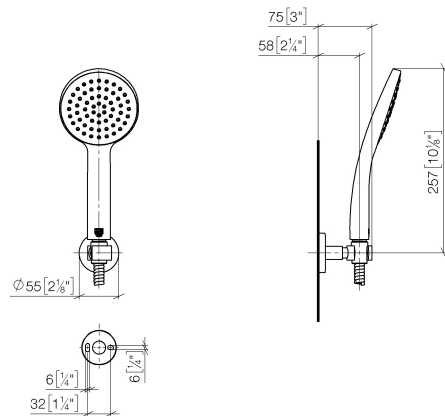


- shower head Ø 110 mm
- COMPACT RAIN, max. flow rate 15 l/min (at 3 bar)
- Function from: l/min
- with anti-scale system
- inherently safe from back flow
- metal shower hose 1250mm with integrated anti-twist protection
- shower holder rosette Ø 55mm
- 3/8" shower outlet

	Brushed Chrome	27 815 626-93
	Chrome	27 815 626-00
	Matte Black	27 815 626-33

27 815 626 Product version from 9/1/2025

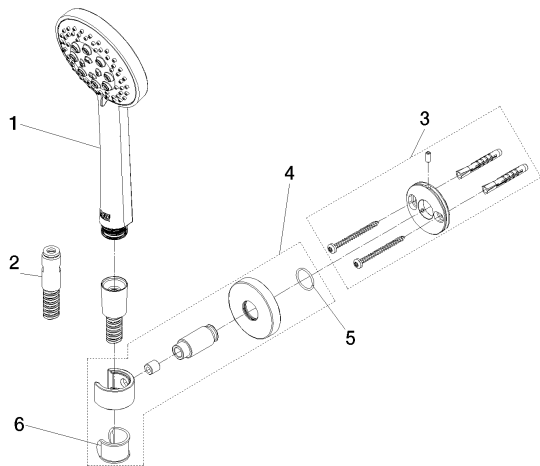
mm [inches]



Flow rate chart



Parts for other
finishes can be found
here: [Chrome](#)



Spare parts list

No.	Item Number	Name	Quantity used	Delivery time
	6 90 18 40 035 00 90	sleeve	1.00	2
	5 90 14 10 032 00 90	seal	1.00	2
	1 90 12 11 178 00-93	shower	1.00	20
	3 90 30 30 516 00 90	fixing set	1.00	2
	4 90 28 05 062 50-93	holder	1.00	20
	2 90 30 02 072 00-93	Metal shower hose 1/2" x 3/8" x 1250 mm - Brushed Chrome	1.00	20