

## WATER TUBE Kneipp wall elbow with individual rosettes with hose holder - Chrome

IMO

27 822 979



Fits: IMO, MEM, CL.1, CYO

- laminar flow
- Max. flow rate l/min (at 3 bar)
- rosette 60 x 60 mm
- holder for Kneipp hose
- 1/2" wall elbow
- without hose

Intrinsic protection against back flow.

Product change as of 1.4.2023: max. flow 15 l/min

	Chrome	27 822 979-00
	Brushed Platinum	27 822 979-06
	Platinum	27 822 979-08
	Dark Chrome	27 822 979-19
	Brushed Durabronze (23kt Gold)	27 822 979-28
	Matte Black	27 822 979-33
	Brushed Champagne (22kt Gold)	27 822 979-46
	Champagne (22kt Gold)	27 822 979-47
	Brushed Chrome	27 822 979-93
	Brushed Dark Platinum	27 822 979-99

### Recommended miscellaneous



- Concealed wall elbow -** 35 085 970 90
- max. recess depth 163 mm
  - min. recess depth 90 mm

### Required miscellaneous



- WATER TUBE Kneipp hose black** 28 286 979-00
- 2000 mm - Chrome**
- with holding ring
  - hose nozzle with sleeve M33

### Required miscellaneous

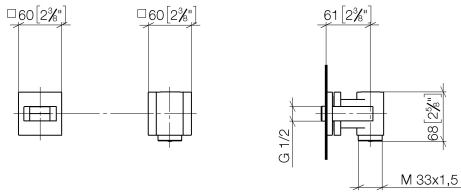


- WATER TUBE Kneipp hose white** 28 285 979-00
- 2000 mm - Chrome**
- with holding ring
  - hose nozzle with sleeve M33

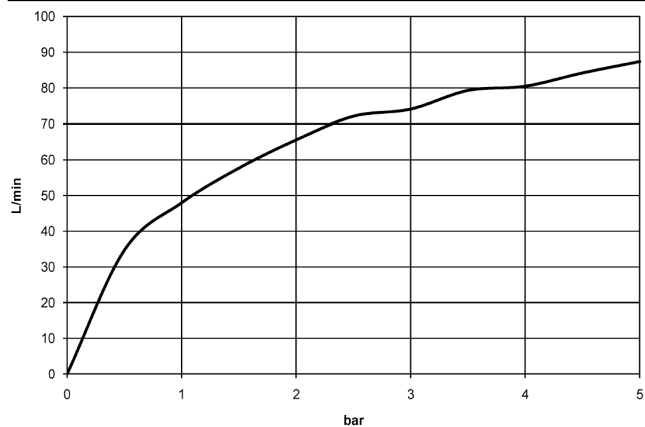
## WATER TUBE Kneipp wall elbow with individual rosettes with hose holder - Chrome

IMO

27 822 979  
mm [inches]



Flow rate chart



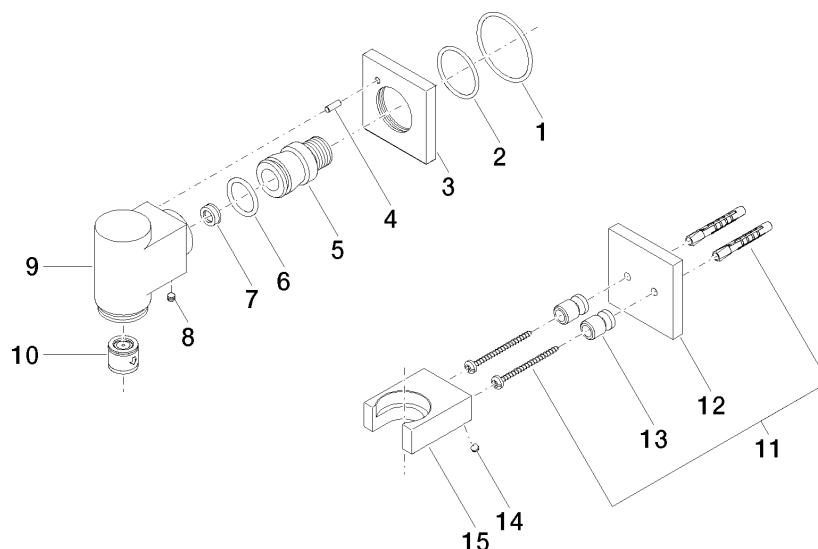
## Certificates

Belgaqua\_22\_280\_2  
7\_7.

# WATER TUBE Kneipp wall elbow with individual rosettes with hose holder - Chrome

IMO

27 822 979



## Spare parts list

No.	Item Number	Name	Quantity used	Delivery time
1	90 14 10 049 00 90	seal	1	2
2	09 14 10 119 90	seal	1	2
3	09 27 97 021-00	rosette	1	10
4	09 31 11 040 90	pin	1	2
5	09 24 03 151 90	nipple	1	2
6	09 14 10 081 90	seal	1	2
7	90 23 01 146 00 90	flow reducer	1	2
8	90 31 11 112 00 90	pin	1	2
9	09 11 03 053-00	connection	1	10
10	90 23 01 045 00 90	back-flow preventer	1	2
11	05 17 20 726 02 90	fixing set	1	2
12	09 27 97 022-00	rosette	1	10
13	08 17 20 726 90	holder	2	2
14	09 31 11 148 90	pin	2	2
15	09 17 20 023-00	holder	1	10