

## WATER TUBE Kneipp wall elbow with individual rosettes with hose holder - Platinum

IMO

27 822 979



Fits: IMO, MEM, CL.1, CYO

- laminar flow
- Max. flow rate l/min (at 3 bar)
- rosette 60 x 60 mm
- holder for Kneipp hose
- 1/2" wall elbow
- without hose

Intrinsic protection against back flow.

Product change as of 1.4.2023: max. flow 15 l/min

	Platinum	27 822 979-08
	Chrome	27 822 979-00
	Brushed Platinum	27 822 979-06
	Dark Chrome	27 822 979-19
	Brushed Durabronze (23kt Gold)	27 822 979-28
	Matte Black	27 822 979-33
	Brushed Champagne (22kt Gold)	27 822 979-46
	Champagne (22kt Gold)	27 822 979-47
	Brushed Chrome	27 822 979-93
	Brushed Dark Platinum	27 822 979-99

### Recommended miscellaneous



- Concealed wall elbow -**
- max. recess depth 163 mm
  - min. recess depth 90 mm

35 085 970 90

### Required miscellaneous



- WATER TUBE Kneipp hose white 2000 mm - Platinum**
- with holding ring
  - hose nozzle with sleeve M33

28 285 979-08

### Required miscellaneous



- WATER TUBE Kneipp hose black 2000 mm - Platinum**
- with holding ring
  - hose nozzle with sleeve M33

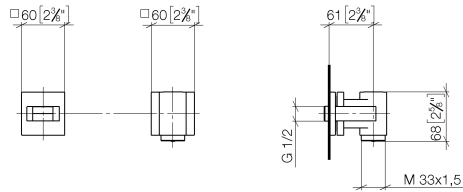
28 286 979-08

## WATER TUBE Kneipp wall elbow with individual rosettes with hose holder - Platinum

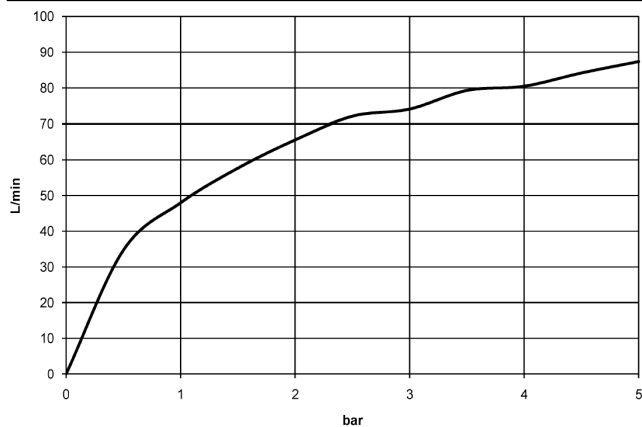
IMO

27 822 979

mm [inches]



### Flow rate chart



### Codes & Standards

EN 1717



## WATER TUBE Kneipp wall elbow with individual rosettes with hose holder - Platinum

---

IMO

27 822 979

Certificates

---

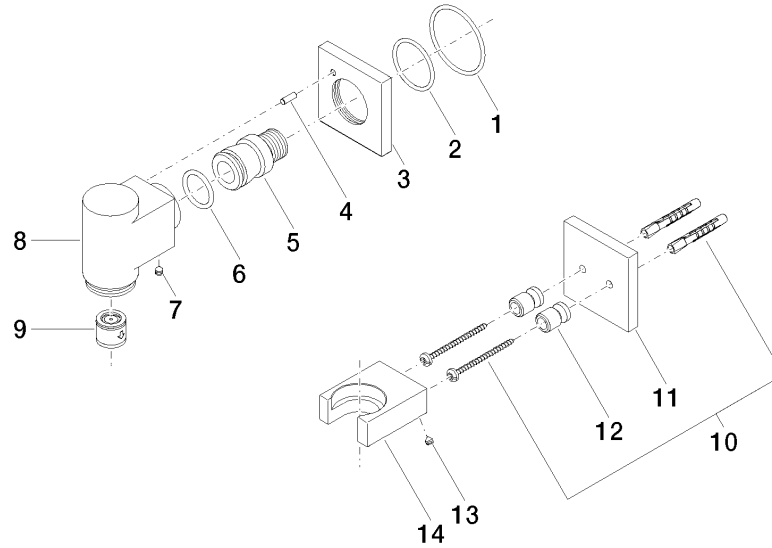
Belgaqua\_22\_280\_2

# WATER TUBE Kneipp wall elbow with individual rosettes with hose holder - Platinum

IMO

27 822 979

**Product version from 3/12/2018**





## WATER TUBE Kneipp wall elbow with individual rosettes with hose holder - Platinum

---

IMO

27 822 979

### **Spare parts list**

**Product version from 3/12/2018**