

WATER TUBE Kneipp wall elbow with individual rosettes with hose holder FlowReduce - Brushed Dark Platinum

IMO



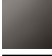


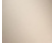
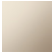
27 842 979



Fits: IMO, MEM, CL.1, CYO

- laminar flow
- rosette 60 x 60 mm
- holder for Kneipp hose
- 1/2" wall elbow
- without hose
- This product can help a building meet the requirements of Green Building Rating Systems, e.g. LEED®, BREEAM®, DGNB

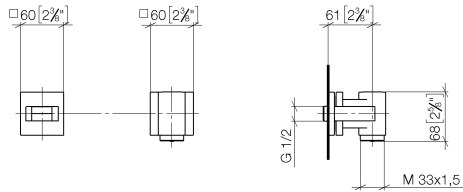
Intrinsic protection against back flow.

	Brushed Dark Platinum	27 842 979-99
	Chrome	27 842 979-00
	Brushed Platinum	27 842 979-06
	Platinum	27 842 979-08
	Dark Chrome	27 842 979-19
	Brushed Durabronze (23kt Gold)	27 842 979-28
	Matte Black	27 842 979-33
	Brushed Champagne (22kt Gold)	27 842 979-46
	Champagne (22kt Gold)	27 842 979-47
	Brushed Chrome	27 842 979-93

WATER TUBE Kneipp wall elbow with individual rosettes with hose holder FlowReduce - Brushed Dark Platinum

IMO

27 842 979
mm [inches]



Flow rate chart



Certificates

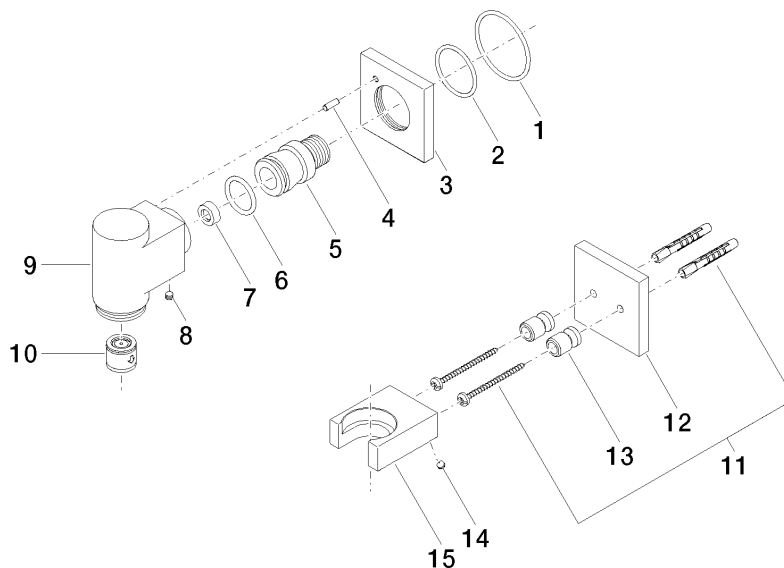
Belgaqua_24-007-
27_7.

WATER TUBE Kneipp wall elbow with individual rosettes with hose holder FlowReduce - Brushed Dark Platinum

IMO

27 842 979

Parts for other
finishes can be found
here: [Chrome](#)



Spare parts list

No.	Item Number	Name	Quantity used	Delivery time
1	90 14 10 049 00 90	seal	1	2
2	09 14 10 119 90	seal	1	2
3	09 27 97 021-99	rosette	1	60
4	09 31 11 040 90	pin	1	2
5	09 24 03 151 90	nipple	1	2
6	09 14 10 081 90	seal	1	2
7	90 23 01 145 00 90	flow reducer	1	2
8	90 31 11 112 00 90	pin	1	2
9	09 11 03 053-99	connection	1	60
10	90 23 01 045 00 90	back-flow preventer	1	2
11	05 30 31 025 00 90	fixing set	1	2
12	09 27 97 022-99	rosette	1	60
13	08 17 20 726 90	holder	1	2
14	09 31 11 148 90	pin	2	2
15	09 17 20 023-99	holder	1	60