

Wall elbow - Brushed Champagne (22kt Gold)

IMO

28 450 980



- 3/8" shower outlet
- rosette 60 x 60 mm
- 1/2" connection

Intrinsic protection against back flow.

Fits: IMO, MEM, CL.1, CYO

| | | |
|---|-------------------------------|---------------|
|  | Brushed Champagne (22kt Gold) | 28 450 980-46 |
|  | Chrome | 28 450 980-00 |
|  | Brushed Platinum | 28 450 980-06 |
|  | Platinum | 28 450 980-08 |
|  | Durabrand (23kt Gold) | 28 450 980-09 |
|  | Dark Chrome | 28 450 980-19 |
|  | Brushed Durabrand (23kt Gold) | 28 450 980-28 |
|  | Matte Black | 28 450 980-33 |
|  | Brushed Bronze | 28 450 980-42 |
|  | Champagne (22kt Gold) | 28 450 980-47 |
|  | Brushed Chrome | 28 450 980-93 |
|  | Brushed Dark Platinum | 28 450 980-99 |

Recommended miscellaneous



- Concealed wall elbow -**
- max. recess depth 163 mm
 - min. recess depth 90 mm

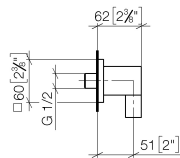
35 085 970 90

Wall elbow - Brushed Champagne (22kt Gold)

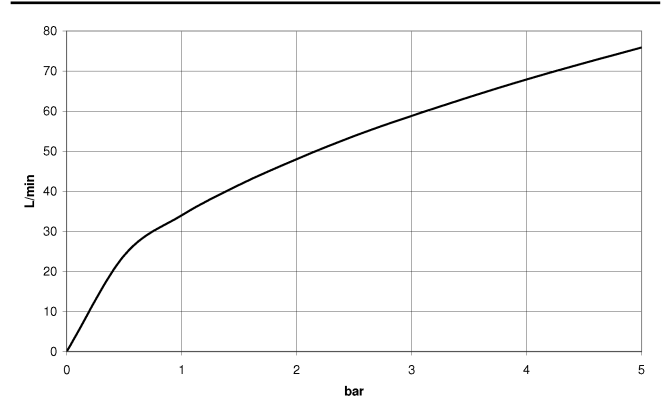
IMO

28 450 980

mm [inches]



Flow rate chart



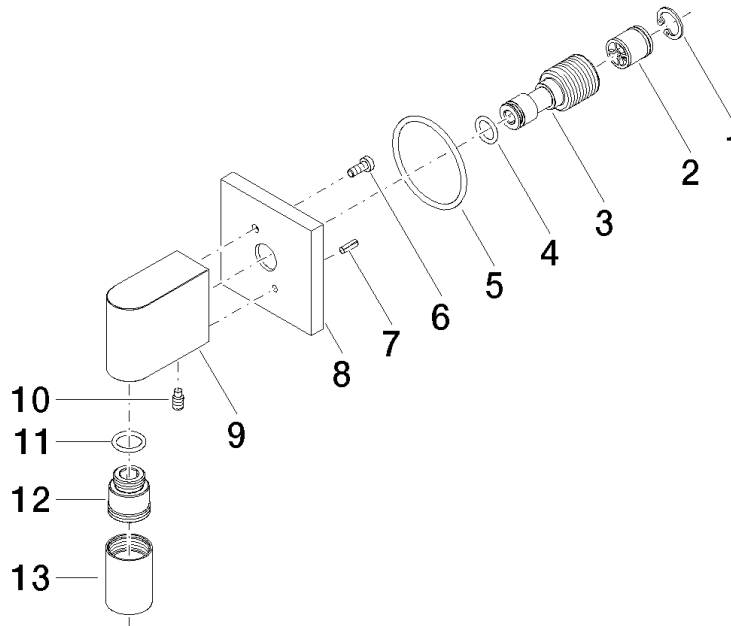
Certificates

Belgaqua_22_280_2

WRAS_2310091.

7_7.

28 450 980



Spare parts list

| No. | Item Number | Name | Quantity used | Delivery time |
|-----|--------------------|---------------------|---------------|---------------|
| 1 | 09 16 01 014 90 | ring | 1 | 2 |
| 2 | 90 23 01 141 00 90 | back-flow preventer | 1 | 2 |
| 3 | 09 24 03 116 20 90 | nipple | 1 | 2 |
| 4 | 09 14 10 008 90 | seal | 1 | 2 |
| 5 | 09 14 10 142 90 | seal | 1 | 2 |
| 6 | 09 30 30 054 90 | screw | 1 | 2 |
| 7 | 09 31 11 026 90 | pin | 1 | 2 |
| 8 | 09 27 82 006-46 | rosette | 1 | 30 |
| 9 | 09 11 03 046-46 | connection | 1 | 30 |
| 10 | 09 31 11 005 90 | pin | 1 | 2 |
| 11 | 90 14 10 077 00 90 | seal | 1 | 2 |
| 12 | 09 24 03 107 20 90 | nipple | 1 | 2 |
| 13 | 90 21 02 069 00-46 | cover | 1 | 30 |