


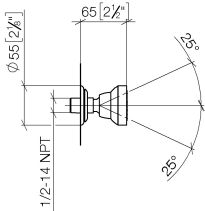
MADISON Body spray without volume control FlowReduce - Durabrass (23kt Gold)
MADISON

28 518 360			
	<ul style="list-style-type: none"> <li>• spray head Ø 55mm</li> <li>• ball-joint pivotable through 25° (in any direction)</li> <li>• rain flow</li> <li>• rosette Ø 55 mm</li> <li>• 1/2" connection</li> <li>• max. flow 5 l/min</li> <li>• This product can help a building to meet requirements of Green Building Rating Systems, e.g. LEED®, BREEAM®, DGNB</li> </ul>	<div> <div></div> Durabrass (23kt Gold) </div> <div> <div></div> Chrome </div> <div> <div></div> Brushed Platinum </div> <div> <div></div> Platinum </div> <div> <div></div> Brushed Durabrass (23kt Gold) </div> <div> <div></div> Brushed Dark Platinum </div>	<div>28 518 360-09</div> <div>28 518 360-00</div> <div>28 518 360-06</div> <div>28 518 360-08</div> <div>28 518 360-28</div> <div>28 518 360-99</div>

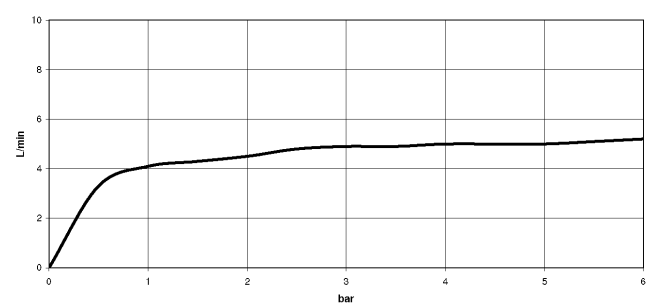
Recommended miscellaneous

	<b>Concealed wall elbow -</b> <ul style="list-style-type: none"> <li>• max. recess depth 163 mm</li> <li>• min. recess depth 90 mm</li> </ul>	35 085 970 90
---	---	---------------

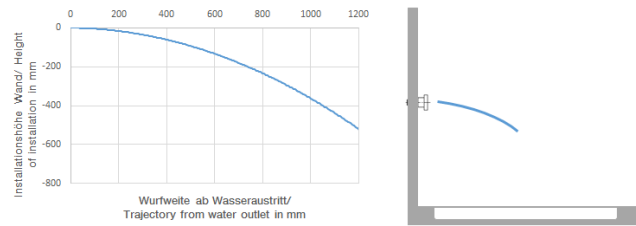
28 518 360  
mm [inches]



Flow rate chart

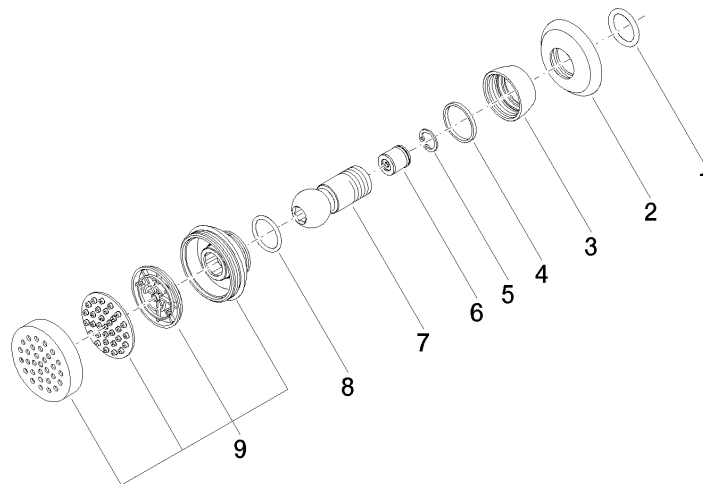


Trajectory diagram



Certificates

LGA\_38651.



## Spare parts list

No.	Item Number	Name	Quantity used	Delivery time
1	90 14 10 026 00 90	seal	1	2
2	09 27 35 003-09	rosette	1	40
3	09 23 30 027-09	nut	1	60
4	09 14 15 010 90	ring	1	2
5	09 16 01 014 90	ring	1	2
6	09 23 01 048 90	back-flow preventer	1	2
7	09 21 40 016-09	connection	1	40
8	09 14 10 015 90	seal	1	2
9	90 12 05 028 00-09	casing ( completely )	1	40