

## Rain shower with wall fixing 220 mm - Matte Black

28 649 670 Product version from 3/13/2017



- 450mm projection
- rain shower Ø 220 mm
- PURE RAIN, max. flow rate 14 l/min (at 3 bar)
- Function from: 7 l/min
- rosette 65 x 65 mm
- 1/2" connection
- with anti-scale system
- quick clearing
- WRAS

|   |                                |               |
|---|--------------------------------|---------------|
|    | Matte Black                    | 28 649 670-33 |
|    | Chrome                         | 28 649 670-00 |
|    | Brushed Platinum               | 28 649 670-06 |
|    | Platinum                       | 28 649 670-08 |
|    | Dark Chrome                    | 28 649 670-19 |
|    | Brushed Light Gold             | 28 649 670-27 |
|    | Brushed Durabronze (23kt Gold) | 28 649 670-28 |
|    | Brushed Champagne (22kt Gold)  | 28 649 670-46 |
|    | Champagne (22kt Gold)          | 28 649 670-47 |
|   | Brushed Chrome                 | 28 649 670-93 |
|  | Brushed Dark Platinum          | 28 649 670-99 |

### Recommended miscellaneous



- Concealed wall elbow -**
- min. recess depth mm
  - max. recess depth mm

35 085 970 90

**Rain shower with wall fixing 220 mm - Matte Black**

28 649 670 Product version from 3/13/2017

mm [inches]



**Flow rate chart**



**Codes & Standards**

DIN 4109

ISO 3822

Scottish Water  
Byelaws

UK Water Supply  
Regulations

Ü-Zeichen



## Rain shower with wall fixing 220 mm - Matte Black

---

28 649 670 Product version from 3/13/2017

### Certificates

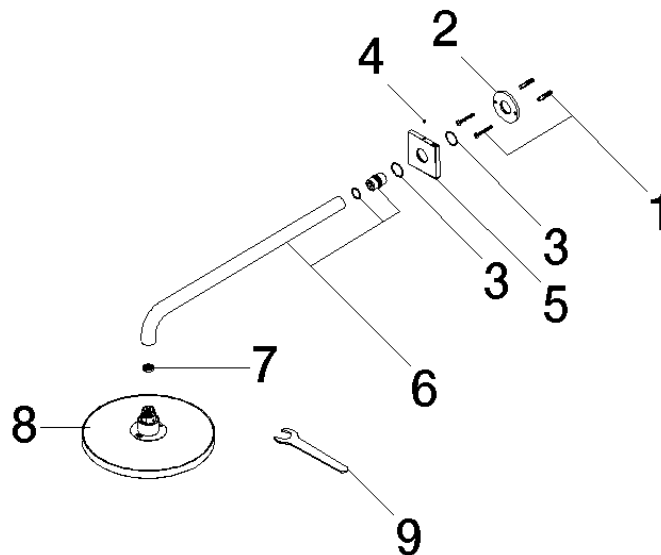
---

WRAS\_2212

LGA\_38

## Rain shower with wall fixing 220 mm - Matte Black

28 649 670 Product version from 3/13/2017



### Spare parts list

| No. | Item Number        | Name       | Quantity used | Delivery time |
|-----|--------------------|------------|---------------|---------------|
| 1   | 04 30 31 032 00 90 | fixing set | 1             | 2             |
| 2   | 09 17 20 120 90    | holder     | 1             | 2             |
| 3   | 09 14 10 150 90    | seal       | 2             | 2             |
| 4   | 90 31 11 038 00 90 | pin        | 1             | 2             |
| 5   | 09 27 67 015-33    | rosette    | 1             | 60            |
| 6   | 90 11 03 070 00-33 | pipe       | 1             | 30            |
| 7   | 09 23 01 075 90    | insert     | 1             | 2             |
| 8   | 04 12 05 092 00-33 | shower     | 1             | 30            |
| 9   | 90 30 09 069 00 90 | key        | 1             | 2             |