

META Two-way diverter for bath rim or tile edge installation - Brushed Bronze

META

29 140 660

Product version from 7/1/2023

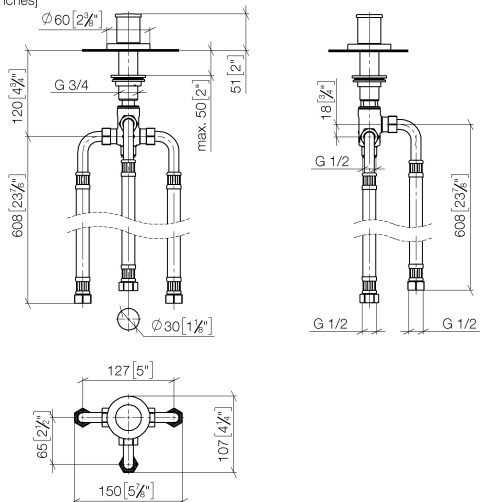


- automatic bath/shower diverter
- hole diameter 32 mm
- rosette Ø 60 mm
- 1/2" connection
- max. flow 64.9 l/min at 3 bar flow pressure
- WRAS

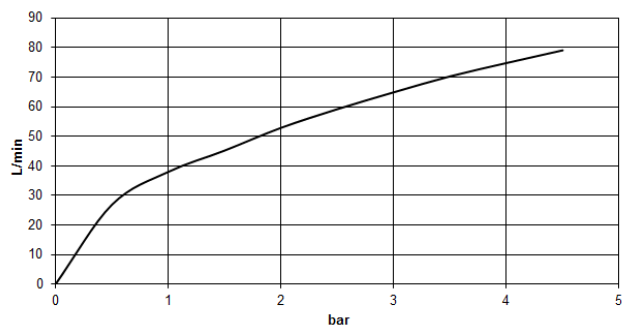
| | | |
|---|-------------------------------|---------------|
|  | Brushed Bronze | 29 140 660-42 |
|  | Chrome | 29 140 660-00 |
|  | Brushed Platinum | 29 140 660-06 |
|  | Dark Chrome | 29 140 660-19 |
|  | Light Gold | 29 140 660-26 |
|  | Brushed Light Gold | 29 140 660-27 |
|  | Matte Black | 29 140 660-33 |
|  | Brushed Dark Brass | 29 140 660-39 |
|  | Brushed Champagne (22kt Gold) | 29 140 660-46 |
|  | Champagne (22kt Gold) | 29 140 660-47 |
|  | Brushed Chrome | 29 140 660-93 |
|  | Brushed Dark Platinum | 29 140 660-99 |

29 140 660 Product version from 7/1/2023

mm [inches]



Flow rate chart



Codes & Standards

ASME A112.18.1

cUPC

DIN 4109

ISO 3822

Ü-Zeichen



META Two-way diverter for bath rim or tile edge installation - Brushed Bronze

META

29 140 660 Product version from 7/1/2023

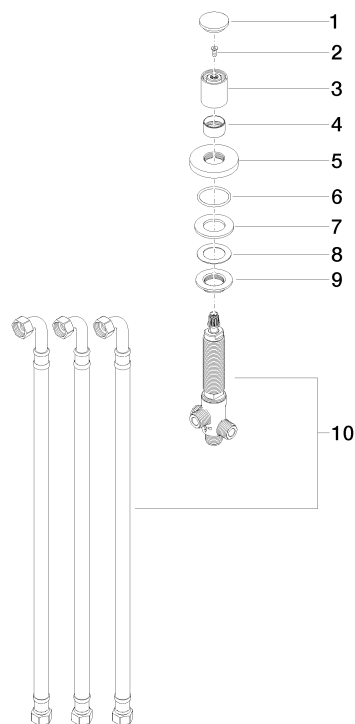
Certificates and sustainability

LGA_29

IAPMO_4976

29 140 660 Product version from 7/1/2023

Parts for other
finishes can be found
here: [Chrome](#)



Spare parts list

| No. | Item Number | Name | Quantity used | Delivery time |
|-----|--------------------|----------|---------------|---------------|
| 3 | 09 20 71 002-42 | handle | 1.00 | 60 |
| 10 | 90 17 09 051 00 90 | diverter | 1.00 | 2 |
| 5 | 09 27 66 004-42 | rosette | 1.00 | 60 |
| 9 | 09 23 10 004 90 | nut | 1.00 | 2 |
| 8 | 09 14 40 002 90 | seal | 1.00 | 2 |
| 2 | 90 30 30 014 00 90 | screw | 1.00 | 2 |
| 1 | 09 20 71 003-42 | handle | 1.00 | 60 |
| 7 | 09 14 05 014 90 | seal | 1.00 | 2 |
| 4 | 09 16 01 012-42 | ring | 1.00 | 60 |
| 6 | 09 14 10 030 90 | seal | 1.00 | 2 |