

VAIA Wall-mounted valve cold water without pop-up waste - Brushed Platinum

VAIA

30 010 809

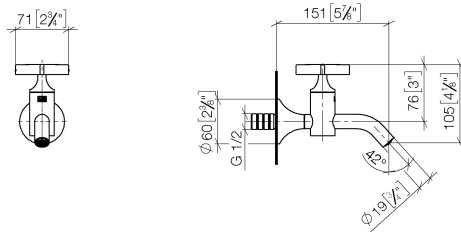


- 151mm projection
- fixed spout
- adapter with male thread 3/4"
- hole diameter 35 mm
- rosette Ø 60 mm
- max. flow 5.7 l/min
- lead-free
- This product can help a building meet the requirements of Green Building Rating Systems, e.g. LEED®, BREEAM®, DGNB
- WRAS 240102003

| | | |
|--|--------------------------------|---------------|
|  | Brushed Platinum | 30 010 809-06 |
|  | Chrome | 30 010 809-00 |
|  | Platinum | 30 010 809-08 |
|  | Dark Chrome | 30 010 809-19 |
|  | Brushed Durabronze (23kt Gold) | 30 010 809-28 |
|  | Brushed Bronze | 30 010 809-42 |
|  | Brushed Champagne (22kt Gold) | 30 010 809-46 |
|  | Champagne (22kt Gold) | 30 010 809-47 |
|  | Brushed Dark Platinum | 30 010 809-99 |

30 010 809

mm [inches]



Flow rate chart



Codes & Standards

DIN 4109

ISO 3822

Scottish Water
Byelaws

UK Water Supply
Regulations

Ü-Zeichen



VAIA Wall-mounted valve cold water without pop-up waste - Brushed Platinum

VAIA

30 010 809

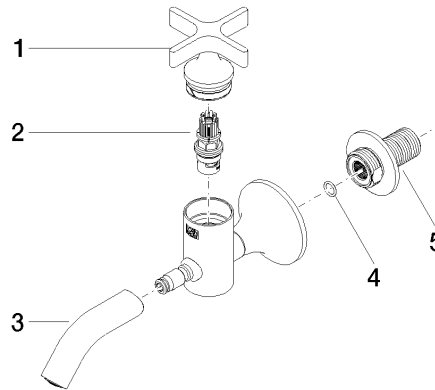
Certificates

WRAS_240102

LGA_18

30 010 809

Parts for other
finishes can be found
here: [Chrome](#)





VAIA Wall-mounted valve cold water without pop-up waste - Brushed Platinum

VAIA

30 010 809

Spare parts list

| No. | Item Number | Name | Quantity used | Delivery time |
|-----|--------------------|--------|---------------|---------------|
| | 90 20 66 025 00-06 | handle | 5 | 10 |