

TARA Wall-mounted valve cold water without pop-up waste - Brushed Bronze

30 010 892 Product version from 6/30/2009



- 140mm projection
- fixed spout
- circular, air-enriched flow
- adapter with male thread 3/4"
- hole diameter 32 mm
- rosette Ø 55 mm
- max. flow 5.7 l/min
- lead-free
- This product can help a building meet the requirements of Green Building Rating Systems, e.g. LEED®, BREEAM®, DGNB

	Brushed Bronze	30 010 892-42
	Chrome	30 010 892-00
	Brushed Platinum	30 010 892-06
	Platinum	30 010 892-08
	Dark Chrome	30 010 892-19
	Brushed Durabrass (23kt Gold)	30 010 892-28
	Matte Black	30 010 892-33
	Brushed Champagne (22kt Gold)	30 010 892-46
	Champagne (22kt Gold)	30 010 892-47
	Brushed Chrome	30 010 892-93
	Brushed Dark Platinum	30 010 892-99

Recommended miscellaneous

Concealed wall elbow -

35 085 970 90

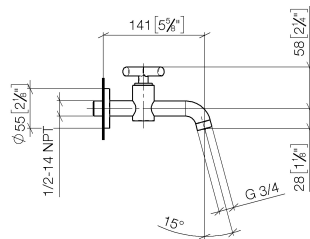


- min. recess depth mm
- max. recess depth mm

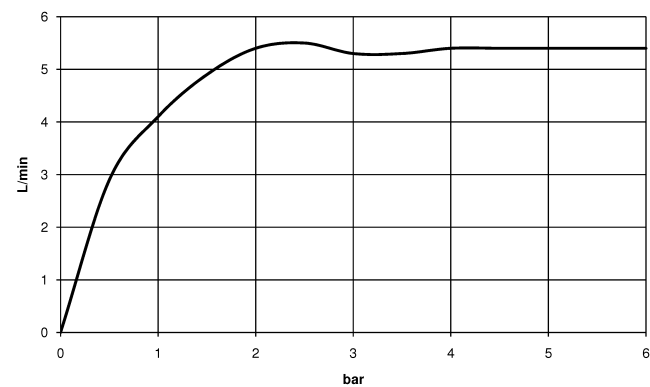
TARA Wall-mounted valve cold water without pop-up waste - Brushed Bronze

30 010 892 Product version from 6/30/2009

mm [inches]



Flow rate chart



Codes & Standards

DIN 4109 ISO 3822 Ü-Zeichen



TARA Wall-mounted valve cold water without pop-up waste - Brushed Bronze

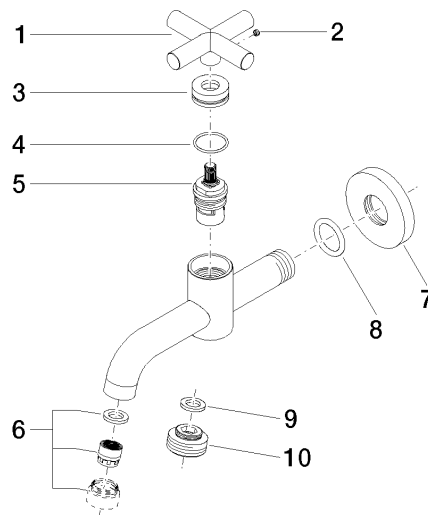
30 010 892 Product version from 6/30/2009

Certificates

LGA_18

TARA Wall-mounted valve cold water without pop-up waste - Brushed Bronze

30 010 892 Product version from 6/30/2009



Spare parts list

No.	Item Number	Name	Quantity used	Delivery time
1	09 20 89 011-42	handle	1	60
2	09 31 11 055 90	pin	1	2
3	09 21 02 089-42	sleeve	1	60
4	09 14 10 085 90	seal	1	2
5	90 90 03 135 00 90	top	1	2
6	90 23 01 068 02-42	aerator	1	-
Spare part can no longer be ordered, please order the replacement item				
7	09 27 22 003-42	rosette	1	60
8	90 14 10 026 00 90	seal	1	2
9	90 14 05 020 00 90	seal	1	2
10	09 24 03 012-42	nipple	1	60