

TARA Wall-mounted bridge mixer with extending spout - Durabronss (23kt Gold)

TARA

31 151 892

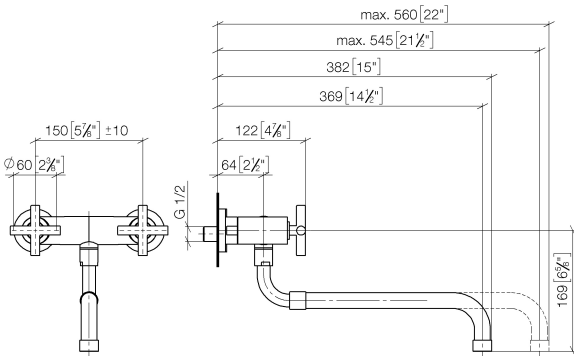


- 365-545mm projection
- pivoting spout
- laminar flow
- 1/2" connection
- max. flow 8.3 l/min at 3 bar flow pressure
- lead-free
- This product can help a building meet the requirements of Green Building Rating Systems, e.g. LEED®, BREEAM®, DGNB

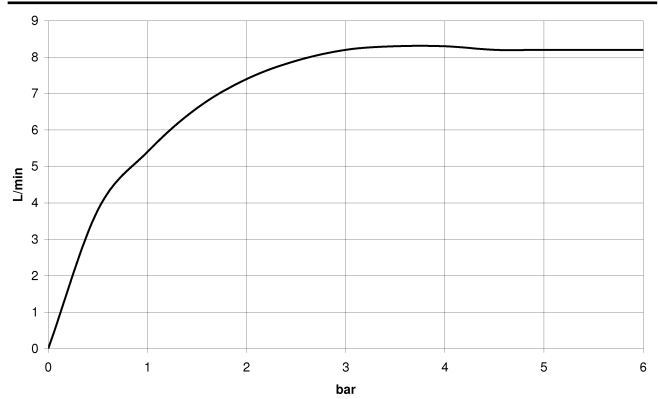
	Durabronss (23kt Gold)	31 151 892-09
	Chrome	31 151 892-00
	Brushed Platinum	31 151 892-06
	Platinum	31 151 892-08
	Dark Chrome	31 151 892-19
	Brushed Durabronss (23kt Gold)	31 151 892-28
	Brushed Champagne (22kt Gold)	31 151 892-46
	Champagne (22kt Gold)	31 151 892-47
	Brushed Chrome	31 151 892-93
	Brushed Dark Platinum	31 151 892-99

31 151 892

mm [inches]

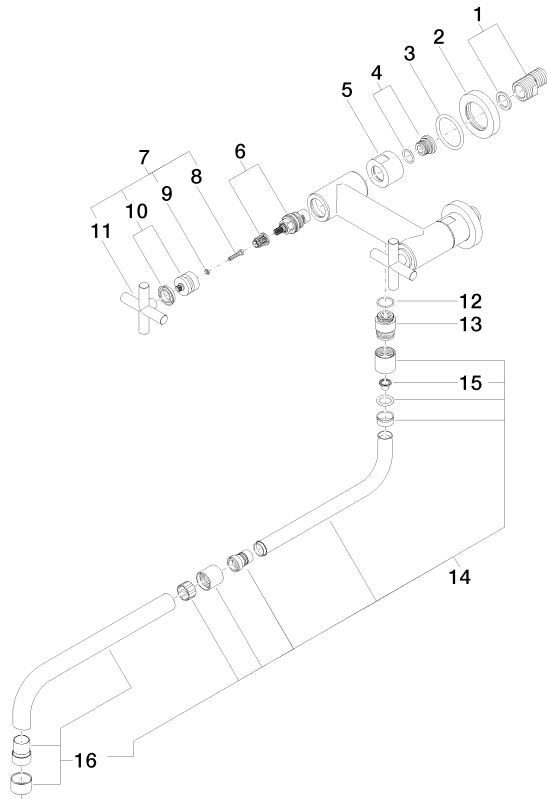


Flow rate chart



31 151 892

Parts for other
finishes can be found
here: [Chrome](#)



Spare parts list

No.	Item Number	Name	Quantity used	Delivery time
1	04 11 04 003 00 90	connection	2	2
2	09 27 89 004-09	rosette	2	40
3	09 14 10 041 90	seal	2	2
4	04 29 05 014 00 90	nipple	2	2
5	09 23 30 012-09	nut	2	40
6	90 90 03 131 00 90	top	2	2
7	90 20 89 010 10-09	handle	2	-
Spare part can no longer be ordered, please order the replacement item				
8	90 30 30 075 00 90	screw	2	2
9	90 30 11 029 00 90	disc	2	2
10	90 12 12 007 00-09	base	2	40
11	09 20 89 010-09	handle	2	40
12	90 14 10 032 00 90	seal	1	2
13	09 24 03 093 10-09	nipple	1	40
14	04 28 25 075 00-09	spout	1	60
15	09 29 03 027 90	insert	1	2
16	90 28 25 076 00-09	spout	1	40