

TARA ULTRA Two-hole mixer with individual rosettes - Brushed Champagne (22kt Gold)

TARA ULTRA

32 815 875 Product version from 1/1/2025



- 241mm projection
- pivotable spout 360°
- Optional swivel limiter available with swivel limiter set 12 820 970 90
- air-enriched flow
- max. flow 8 l/min at 3 bar flow pressure
- lead-free
- This product can help a building meet the requirements of Green Building Rating Systems, e.g. LEED®, BREEAM®, DGNB
- WRAS

Operating unit can be positioned freely.

	Brushed Champagne (22kt Gold)	32 815 875-46
	Chrome	32 815 875-00
	Brushed Platinum	32 815 875-06
	Platinum	32 815 875-08
	Durabrand (23kt Gold)	32 815 875-09
	Dark Chrome	32 815 875-19
	Brushed Durabrand (23kt Gold)	32 815 875-28
	Matte Black	32 815 875-33
	Brushed Bronze	32 815 875-42
	Champagne (22kt Gold)	32 815 875-47
	Brushed Chrome	32 815 875-93
	Brushed Dark Platinum	32 815 875-99

Recommended miscellaneous

Swivel limitation set - 12 820 970 90



Recommended miscellaneous

Dispenser with rosette - Brushed Champagne (22kt Gold) 82 444 970-46



Recommended miscellaneous

Strainer waste with control handle - Brushed Champagne (22kt Gold) 10 710 970-46



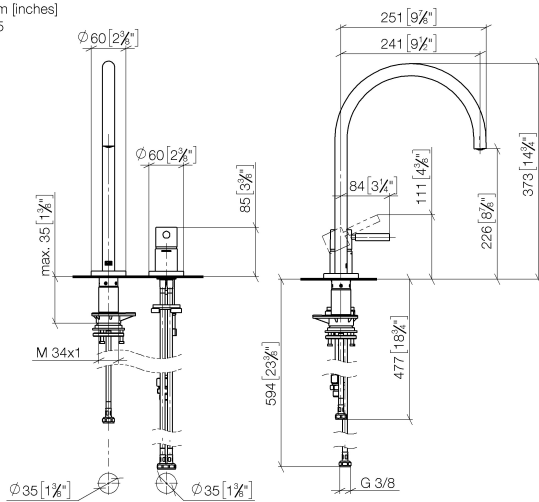
TARA ULTRA Two-hole mixer with individual rosettes - Brushed Champagne (22kt Gold)

TARA ULTRA

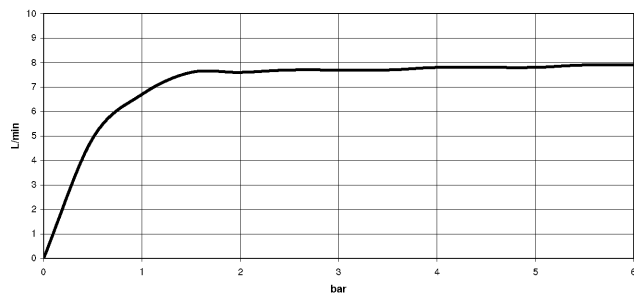
32 815 875 Product version from 1/1/2025

mm [inches]

1:5



Flow rate chart



Codes & Standards

DIN 4109

ISO 3822

Scottish Water
Byelaws

UK Water Supply
Regulations

Ü-Zeichen



TARA ULTRA Two-hole mixer with individual rosettes - Brushed Champagne (22kt Gold)

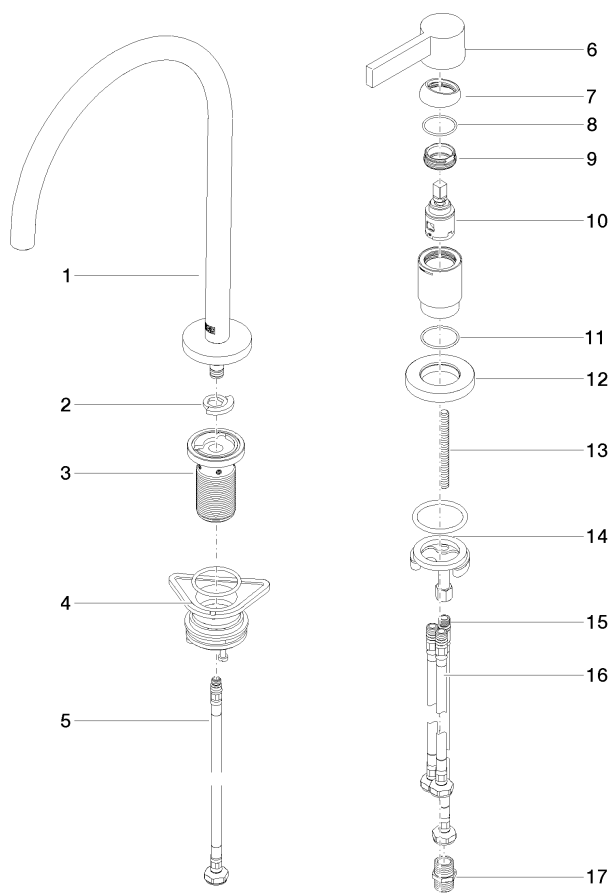
TARA ULTRA

32 815 875 Product version from 1/1/2025

Certificates and sustainability

LGA_38

WRAS_240102



Spare parts list

No.	Item Number	Name	Quantity used	Delivery time
	12 09 27 97 040-46	rosette	1.00	60
	7 09 28 30 026-46	cover	1.00	60
	3 90 30 01 299 00 90	shaft	1.00	2
	14 04 30 11 085 97 90	fixing set	1.00	2
	10 90 15 05 042 00 90	cartridge	1.00	2
	1 90 28 22 377 00-46	spout	1.00	-
Spare part can no longer be ordered, please order the replacement item				
	5 04 30 04 100 00 90	hose	1.00	2
	17 90 24 03 250 00 90	nipple	1.00	2
	13 09 31 11 011 90	pin	1.00	2
	6 90 20 87 003 00-46	handle	1.00	30
	2 12 820 970 90	Swivel limitation set -	1.00	2
	9 09 24 04 266 90	nut	1.00	2
	15 04 30 04 104 00 90	hose	1.00	2
	11 09 14 10 110 90	seal	1.00	2
	4 04 23 10 044 08 90	fixing set	1.00	2
	16 04 30 04 105 00 90	hose	2.00	2
	8 09 14 10 091 90	seal	1.00	2