
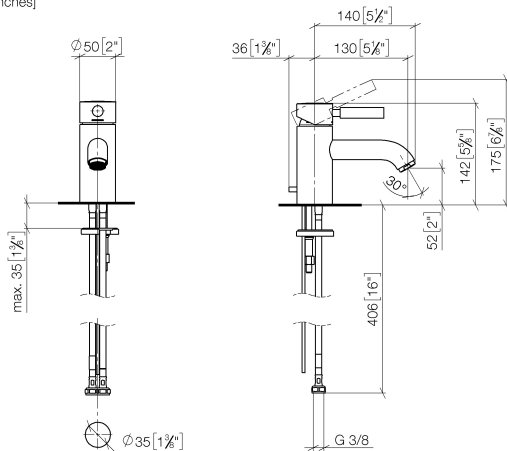


EDITION PRO GRANDE Single-lever basin mixer with pop-up waste - Matte Black

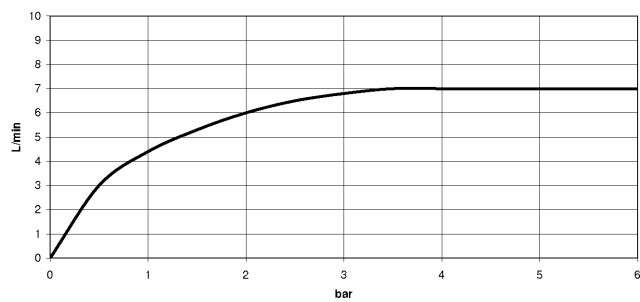
33 502 626			
	<ul style="list-style-type: none"> • 130mm projection • fixed spout • circular, air-enriched flow • height of mixer 142 mm • height up to aerator 52 mm • hole diameter 35 mm • 2x screw-in M 10 x 1 pressure hose, leak-tested • max. flow 7 l/min • lead-free • WRAS 	<div> <div></div> <div>Matte Black</div> </div>	33 502 626-33
		<div> <div></div> <div>Chrome</div> </div>	33 502 626-00
		<div> <div></div> <div>Brushed Chrome</div> </div>	33 502 626-93
Only suitable for basins with an overflow.			

EDITION PRO GRANDE Single-lever basin mixer with pop-up waste - Matte Black

33 502 626
mm [inches]



Flow rate chart



Codes & Standards

DIN 4109

ISO 3822

Scottish Water
Byelaws

UK Water Supply
Regulations

Ü-Zeichen



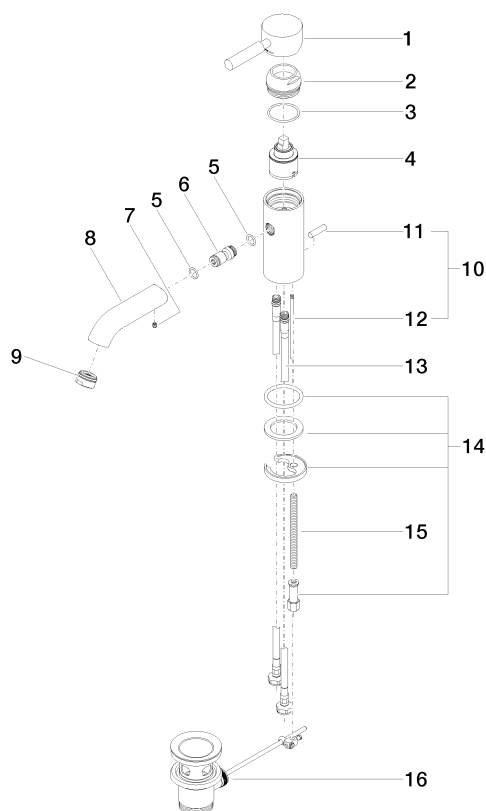
EDITION PRO GRANDE Single-lever basin mixer with pop-up waste - Matte Black

33 502 626
Certificates

WRAS_1805	LGA_9	WRAS_240602
-----------	-------	-------------

EDITION PRO GRANDE Single-lever basin mixer with pop-up waste - Matte Black

33 502 626
Parts for other
finishes can be found
here: [Chrome](#)



Spare parts list

No.	Item Number	Name	Quantity used	Delivery time
1	90 20 62 047 00-33	handle	1	30
2	09 28 30 016-33	cover	1	30
3	09 14 10 134 90	seal	1	2
4	90 15 05 045 00 90	cartridge	1	2
5	09 14 10 003 90	seal	1	2
6	09 24 04 025 10 90	nipple	1	2
7	90 31 11 030 00 90	pin	1	2
8	09 11 06 063 10-33	spout	1	30
9	90 23 01 118 01-33	aerator	1	30
11	04 20 62 030 80-33	pull-rod	1	30
12	09 20 62 030-33	handle	1	30
13	09 31 09 080-33	pull-rod	1	30
14	04 30 04 104 00 90	hose	2	2
15	04 30 11 038 00 90	fixing set	1	2
16	09 31 11 012 90	pin	1	2
17	90 11 01 001 00-33	pop-up waste	1	30