

## VAIA Single-lever basin mixer with raised base without pop-up waste - Dark Chrome


VAIA

33 534 809



- 201mm projection
- pivotable spout 360°
- circular, air-enriched flow
- height of mixer 414 mm
- height up to aerator 316 mm
- hole diameter 35 mm
- max. flow 5.7 l/min
- 2x screw-in M 8 x 1 pressure hose, leak-tested
- This product can help a building meet the requirements of Green Building Rating Systems, e.g. LEED®, BREEAM®, DGNB
- lead-free
- WRAS

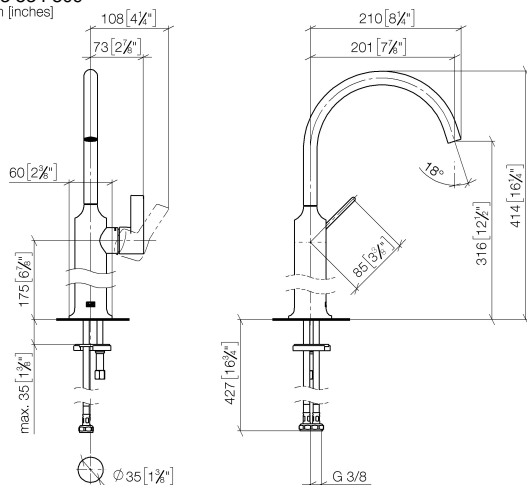
for use on countertop bowls

	Dark Chrome	33 534 809-19
	Chrome	33 534 809-00
	Brushed Platinum	33 534 809-06
	Platinum	33 534 809-08
	Brushed Durabronze (23kt Gold)	33 534 809-28
	Brushed Dark Brass	33 534 809-39
	Brushed Bronze	33 534 809-42
	Brushed Champagne (22kt Gold)	33 534 809-46
	Champagne (22kt Gold)	33 534 809-47
	Brushed Dark Platinum	33 534 809-99

## VAIA Single-lever basin mixer with raised base without pop-up waste - Dark Chrome

VAIA

33 534 809  
mm [inches]



Flow rate chart



### Codes & Standards

DIN 4109

Executive Order  
no. 1007

ISO 3822

Scottish Water  
Byelaws

UK Water Supply  
Regulations

Ü-Zeichen



VAIA Single-lever basin mixer with raised base without pop-up waste - Dark Chrome

VAIA

33 534 809

Certificates and sustainability

LGA\_29

GDV\_0400

WRAS\_240702

## VAIA Single-lever basin mixer with raised base without pop-up waste - Dark Chrome

VAIA

33 534 809

Parts for other  
finishes can be found  
here: [Chrome](#)

