

ENO Single-lever mixer - Brushed Dark Platinum

ENO

33 800 760



- 220mm projection
- pivotable spout 130°
- air-enriched flow
- height of mixer 167 mm
- height up to aerator 145 mm
- hole diameter 35 mm
- max. flow 8 l/min at 3 bar flow pressure
- lead-free
- This product can help a building meet the requirements of Green Building Rating Systems, e.g. LEED®, BREEAM®, DGNB

	Brushed Dark Platinum	33 800 760-99
	Chrome	33 800 760-00
	Brushed Platinum	33 800 760-06
	Platinum	33 800 760-08
	Dark Chrome	33 800 760-19
	Brushed Durabronze (23kt Gold)	33 800 760-28
	Brushed Champagne (22kt Gold)	33 800 760-46
	Champagne (22kt Gold)	33 800 760-47
	Brushed Chrome	33 800 760-93

Recommended miscellaneous

Strainer waste with control handle - Brushed Dark Platinum 10 712 970-99

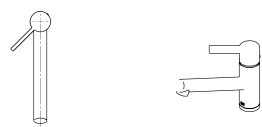
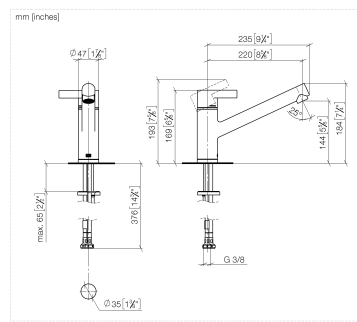


Recommended miscellaneous

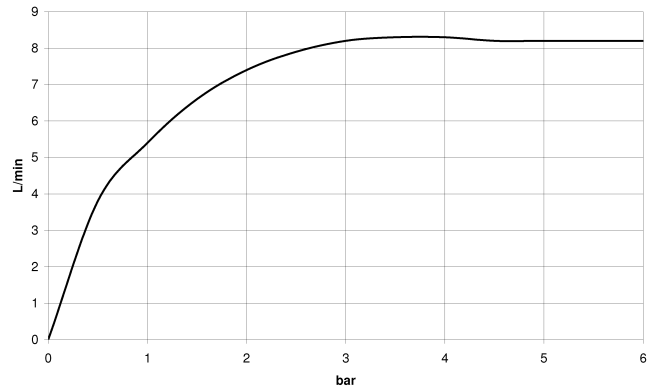
Dispenser without rosette - Brushed Dark Platinum 82 424 970-99



33 800 760



Flow rate chart

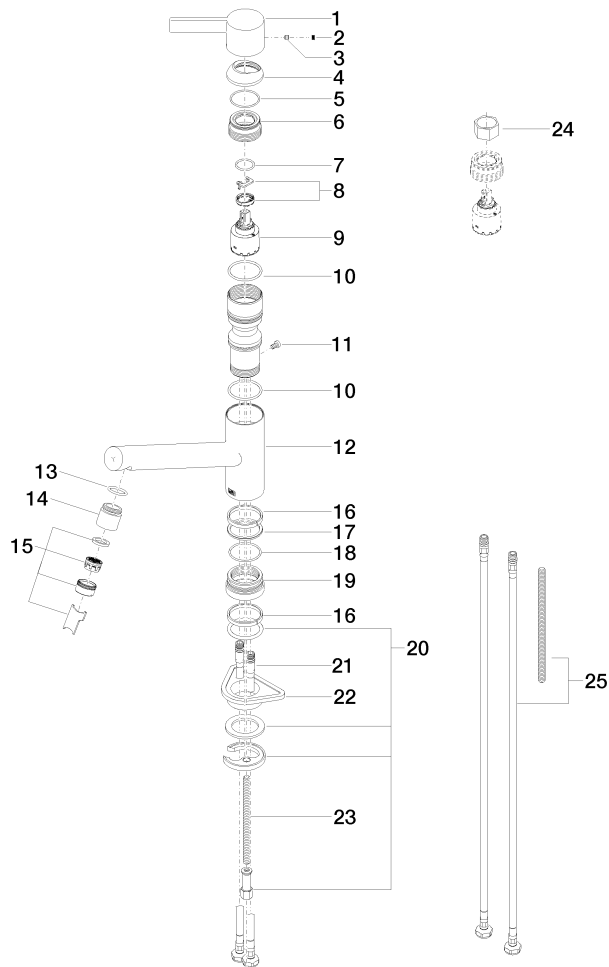


Certificates

ETA_20612. WRAS_1904015. GDV_0400276. LGA_19870.

33 800 760

Parts for other
finishes can be found
here: [Chrome](#)





ENO Single-lever mixer - Brushed Dark Platinum

ENO

33 800 760

Spare parts list

No.	Item Number	Name	Quantity used	Delivery time
1	09 20 76 001-99	handle	1	30
2	90 31 20 109 00 90	plug	1	2
3	90 31 11 030 00 90	pin	1	2
4	09 28 30 012-99	cover	1	30
5	09 14 10 102 90	seal	1	2
6	09 24 04 270 90	nut	1	2
7	09 14 10 031 90	seal	1	2
8	90 28 10 148 00 90	accessories	1	2
9	90 15 05 064 00 90	cartridge	1	2
10	09 14 10 038 90	seal	1	2
11	09 30 30 112 90	screw	1	2
12	09 19 76 002-99	sleeve	1	30
13	09 14 10 100 90	seal	1	2
14	09 24 04 164 10-99	nipple	1	30
15	90 23 01 026 07-99	aerator	1	30
16	09 14 15 029 90	ring	2	2
17	09 28 10 144 90	ring	1	2
18	09 14 10 034 90	seal	1	2
19	09 27 76 001-99	rosette	1	30
20	04 30 11 038 75 90	fixing set	1	2
21	04 30 04 104 00 90	hose	2	2
22	09 18 40 090 90	sleeve	1	2
23	09 31 11 091 90	pin	1	2
24	90 30 09 031 00 90	key	1	2
25	12 803 970 90	extension	1	60