

**MEM BAR TAP Single-lever mixer - Brushed Dark Platinum**

33 805 682 Product version from 3/1/2023



- 166mm projection
- pivotable spout 360°
- Optional swivel limiter available with swivel limiter set 12 820 970 90
- air-enriched flow
- max. flow 6.3 l/min at 3 bar flow pressure
- lead-free
- This product can help a building meet the requirements of Green Building Rating Systems, e.g. LEED®, BREEAM®, DGNB
- WRAS

|   |                                |               |
|---|--------------------------------|---------------|
|    | Brushed Dark Platinum          | 33 805 682-99 |
|    | Chrome                         | 33 805 682-00 |
|    | Brushed Platinum               | 33 805 682-06 |
|    | Platinum                       | 33 805 682-08 |
|    | Durabronze (23kt Gold)         | 33 805 682-09 |
|    | Dark Chrome                    | 33 805 682-19 |
|    | Brushed Durabronze (23kt Gold) | 33 805 682-28 |
|    | Matte Black                    | 33 805 682-33 |
|    | Brushed Bronze                 | 33 805 682-42 |
|   | Brushed Champagne (22kt Gold)  | 33 805 682-46 |
|  | Champagne (22kt Gold)          | 33 805 682-47 |
|  | Brushed Chrome                 | 33 805 682-93 |

**Recommended miscellaneous**

**Swivel limitation set -**

12 820 970 90



**Recommended miscellaneous**

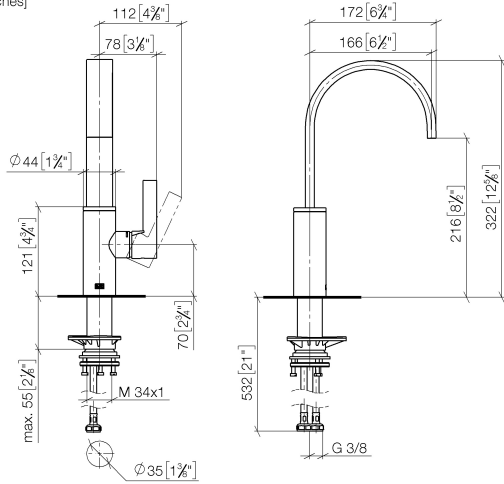
**Strainer waste with control handle - Brushed Dark Platinum** 10 712 970-99



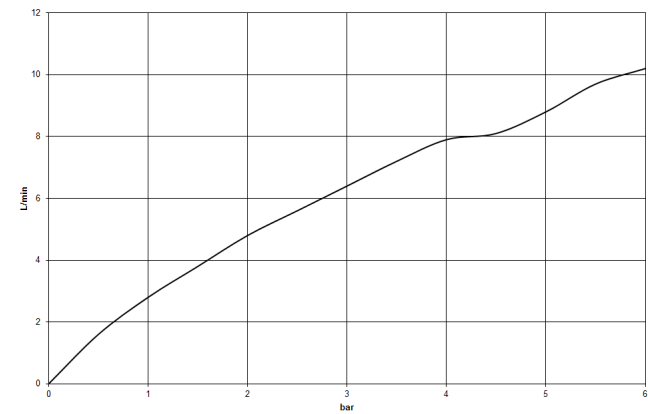
**MEM BAR TAP Single-lever mixer - Brushed Dark Platinum**

33 805 682 Product version from 3/1/2023

mm [inches]



**Flow rate chart**



**Codes & Standards**

DIN 4109

ISO 3822

Scottish Water  
Byelaws

UK Water Supply  
Regulations

Ü-Zeichen



## MEM BAR TAP Single-lever mixer - Brushed Dark Platinum

---

33 805 682 Product version from 3/1/2023

### Certificates

---

LGA\_38

WRAS\_240202

## MEM BAR TAP Single-lever mixer - Brushed Dark Platinum

33 805 682 Product version from 3/1/2023



### Spare parts list

| No.  | Item Number        | Name       | Quantity used | Delivery time |
|--|--------------------|------------|---------------|---------------|
| 1  | 90 28 22 282 00-99 | spout      | 1             | -             |
| Spare part can no longer be ordered, please order the replacement item |                    |            |               |               |
| 2  | 09 19 86 012-99    | cover      | 1             | 60            |
| 3  | 90 23 10 128 00 90 | nut        | 1             | 2             |
| 4  | 90 15 05 042 00 90 | cartridge  | 1             | 2             |
| 5  | 09 24 04 266 90    | nut        | 1             | 2             |
| 6  | 90 28 30 052 00-99 | cover      | 1             | 20            |
| 7  | 90 20 86 004 00-99 | handle     | 1             | 20            |
| 8  | 04 23 10 044 08 90 | fixing set | 1             | 2             |
| 9  | 04 30 04 101 00 90 | hose       | 2             | 2             |