

## TARA Single-lever mixer - Chrome

TARA

33 815 888



- 236mm projection
- pivotable spout 360°
- air-enriched flow
- height of mixer 400 mm
- height up to aerator 230 mm
- hole diameter 35 mm
- max. flow 7 l/min at 3 bar flow pressure
- lead-free
- WRAS 1705020
- This product can help a building meet the requirements of Green Building Rating Systems, e.g. LEED®, BREEAM®, DGNB

|                                                                                     |                               |               |
|-------------------------------------------------------------------------------------|-------------------------------|---------------|
|    | Chrome                        | 33 815 888-00 |
|    | Brushed Platinum              | 33 815 888-06 |
|    | Platinum                      | 33 815 888-08 |
|    | Durabrand (23kt Gold)         | 33 815 888-09 |
|    | Dark Chrome                   | 33 815 888-19 |
|    | Brushed Durabrand (23kt Gold) | 33 815 888-28 |
|    | Matte Black                   | 33 815 888-33 |
|    | Brushed Champagne (22kt Gold) | 33 815 888-46 |
|    | Champagne (22kt Gold)         | 33 815 888-47 |
|   | Brushed Chrome                | 33 815 888-93 |
|  | Brushed Dark Platinum         | 33 815 888-99 |

### Recommended miscellaneous

**Strainer waste with control handle - Chrome** 10 710 970-00



### Recommended miscellaneous

**Dispenser with rosette - Chrome** 82 444 970-00



33 815 888



### Flow rate chart



### Certificates

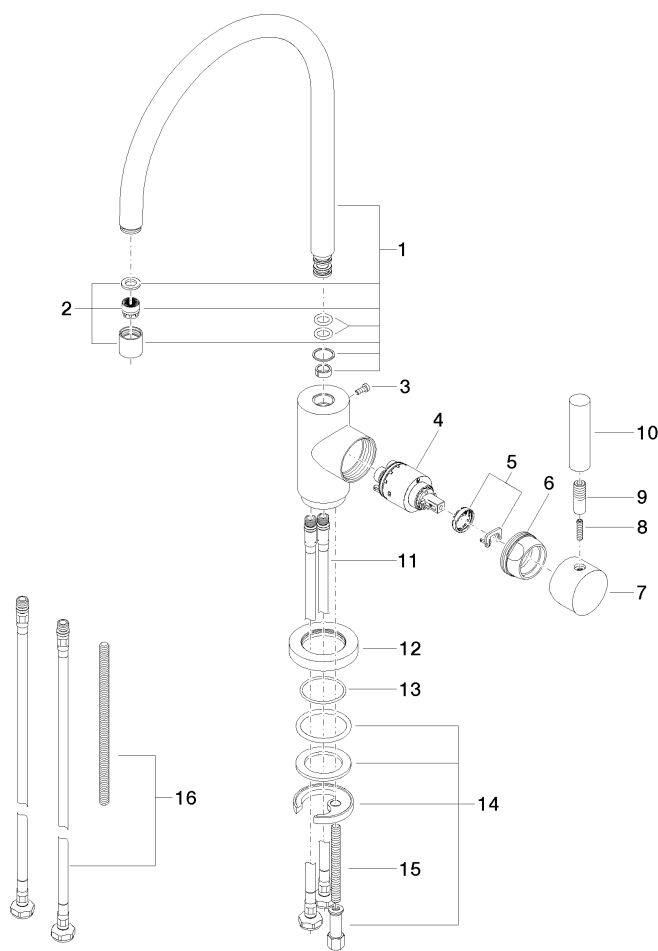
GDV\_0400195.

ETA\_18524.

LGA\_8209.

WRAS\_2311044.

33 815 888



## Spare parts list

| No. | Item Number        | Name        | Quantity used | Delivery time |
|-----|--------------------|-------------|---------------|---------------|
| 1   | 90 28 22 049 02-00 | spout       | 1             | 10            |
| 2   | 90 23 01 028 03-00 | aerator     | 1             | 10            |
| 3   | 09 30 30 054 90    | screw       | 1             | 2             |
| 4   | 90 15 05 065 00 90 | cartridge   | 1             | 2             |
| 5   | 90 28 10 148 00 90 | accessories | 1             | 2             |
| 6   | 09 24 04 107-00    | nut         | 1             | 10            |
| 7   | 90 20 88 040 00-00 | handle      | 1             | 10            |
| 8   | 09 31 11 010 90    | pin         | 1             | 2             |
| 9   | 90 24 04 048 00-00 | nipple      | 1             | 10            |
| 10  | 11 170 880-00      | handle      | 1             | 10            |
| 11  | 04 30 04 104 00 90 | hose        | 2             | 2             |
| 12  | 09 28 10 055-00    | rosette     | 1             | 10            |
| 13  | 09 14 10 034 90    | seal        | 1             | 2             |
| 14  | 04 30 11 038 00 90 | fixing set  | 1             | 2             |
| 15  | 09 31 11 011 90    | pin         | 1             | 2             |
| 16  | 12 803 970 90      | extension   | 1             | 60            |