

## TARA ULTRA Single-lever mixer - Platinum

TARA ULTRA

33 816 875 Product version from 5/31/2010 to 7/25/2018



- 241mm projection
- pivotable spout 360°
- air-enriched flow
- height of mixer 393 mm
- height up to aerator 240 mm
- hole diameter 35 mm
- max. flow 8 l/min at 3 bar flow pressure
- lead-free
- This product can help a building meet the requirements of Green Building Rating Systems, e.g. LEED®, BREEAM®, DGNB
- WRAS

|   |                                |               |
|---|--------------------------------|---------------|
|    | Platinum                       | 33 816 875-08 |
|    | Chrome                         | 33 816 875-00 |
|    | Brushed Platinum               | 33 816 875-06 |
|    | Durabronze (23kt Gold)         | 33 816 875-09 |
|    | Dark Chrome                    | 33 816 875-19 |
|    | Brushed Durabronze (23kt Gold) | 33 816 875-28 |
|    | Matte Black                    | 33 816 875-33 |
|    | Brushed Bronze                 | 33 816 875-42 |
|    | Brushed Champagne (22kt Gold)  | 33 816 875-46 |
|   | Champagne (22kt Gold)          | 33 816 875-47 |
|  | Brushed Chrome                 | 33 816 875-93 |
|  | Brushed Dark Platinum          | 33 816 875-99 |

### Recommended miscellaneous

**Dispenser without rosette -  
Platinum**

82 424 970-08



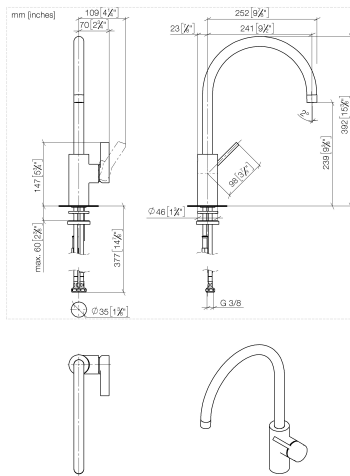
### Recommended miscellaneous

**Strainer waste with control handle - Platinum**

10 712 970-08



33 816 875 Product version from 5/31/2010 to 7/25/2018



**Flow rate chart**



**Codes & Standards**

|                           |                                |                             |            |
|---------------------------|--------------------------------|-----------------------------|------------|
| DIN 4109                  | EN 817                         | Executive Order<br>no. 1007 | ISO 3822   |
| Scottish Water<br>Byelaws | UK Water Supply<br>Regulations | Ü-Zeichen                   | VA-Zeichen |



TARA ULTRA Single-lever mixer - Platinum

TARA ULTRA

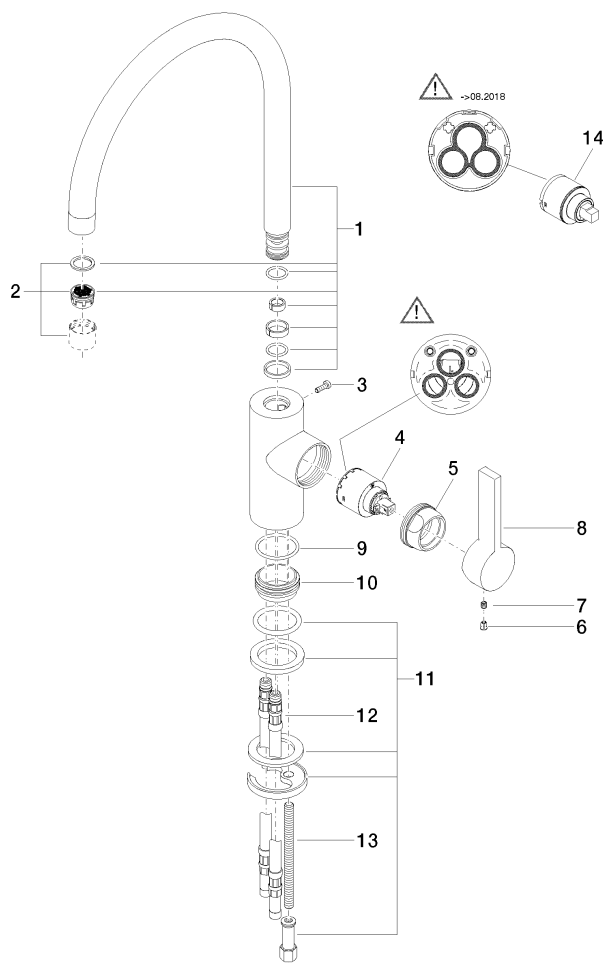
33 816 875    Product version from 5/31/2010 to 7/25/2018

Certificates and sustainability

|          |        |           |        |
|----------|--------|-----------|--------|
| GDV_0400 | LGA_18 | WRAS_2101 | ETA_18 |
|----------|--------|-----------|--------|

33 816 875 Product version from 5/31/2010 to 7/25/2018

Parts for other  
finishes can be found  
here: [Chrome](#)



## Spare parts list

| No. | Item Number        | Name       | Quantity used | Delivery time |
|-----|--------------------|------------|---------------|---------------|
| 2   | 90 23 01 004 07-08 | aerator    | 1.00          | 40            |
| 10  | 09 28 10 109-07    | ring       | 1.00          | 30            |
| 6   | 09 31 20 017 90    | plug       | 1.00          | 2             |
| 1   | 90 28 22 202 02-08 | spout      | 1.00          | 40            |
| 11  | 04 30 11 085 88 90 | fixing set | 1.00          | 2             |
| 4   | 90 15 05 061 00 90 | cartridge  | 1.00          | 60            |
| 9   | 09 14 10 119 90    | seal       | 1.00          | 2             |
| 13  | 09 31 11 012 90    | pin        | 1.00          | 2             |
| 3   | 09 30 30 080 90    | screw      | 1.00          | 2             |
| 5   | 09 24 04 107-08    | nut        | 1.00          | 40            |
| 12  | 04 30 04 016 00 90 | hose       | 2.00          | 60            |
| 8   | 09 20 79 040-08    | handle     | 1.00          | 40            |
| 7   | 90 31 11 030 00 90 | pin        | 1.00          | 2             |
| 14  | 90 15 05 045 00 90 | cartridge  | 1.00          | 2             |