

LOT Single-lever mixer for rinsing/Profi spray - Chrome

LOT

33 826 680 Product version from 7/1/2023




- 236mm projection
 - pivotable spout 360°
 - air-enriched flow
 - max. flow 8 l/min at 3 bar flow pressure
 - lead-free
 - This product can help a building meet the requirements of Green Building Rating Systems, e.g. LEED®, BREEAM®, DGNB
- Single-lever mixer for combining with rinsing/Profi spray only

	Chrome	33 826 680-00
	Brushed Platinum	33 826 680-06
	Platinum	33 826 680-08
	Dark Chrome	33 826 680-19
	Brushed Durabronze (23kt Gold)	33 826 680-28
	Brushed Bronze	33 826 680-42
	Brushed Champagne (22kt Gold)	33 826 680-46
	Champagne (22kt Gold)	33 826 680-47
	Brushed Dark Platinum	33 826 680-99

Recommended miscellaneous

	Dispenser without rosette - Chrome	82 424 970-00
---	---	---------------

Recommended miscellaneous

	Rinsing spray set - Chrome	27 723 970-00
---	-----------------------------------	---------------

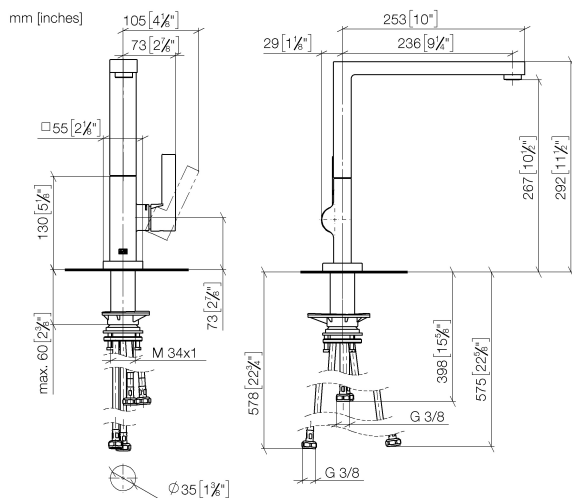
Recommended miscellaneous

	Strainer waste with control handle - Chrome	10 712 970-00
---	--	---------------

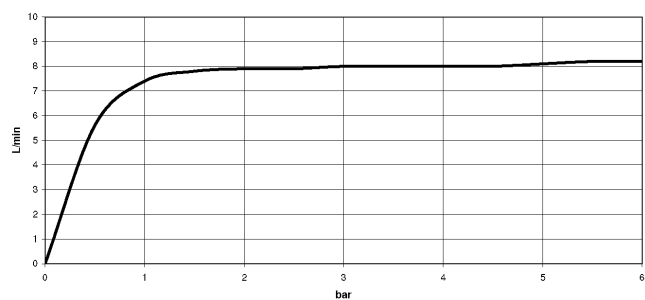
LOT Single-lever mixer for rinsing/Profi spray - Chrome

LOT

33 826 680 Product version from 7/1/2023



Flow rate chart



Codes & Standards

DIN 4109

ISO 3822

Ü-Zeichen



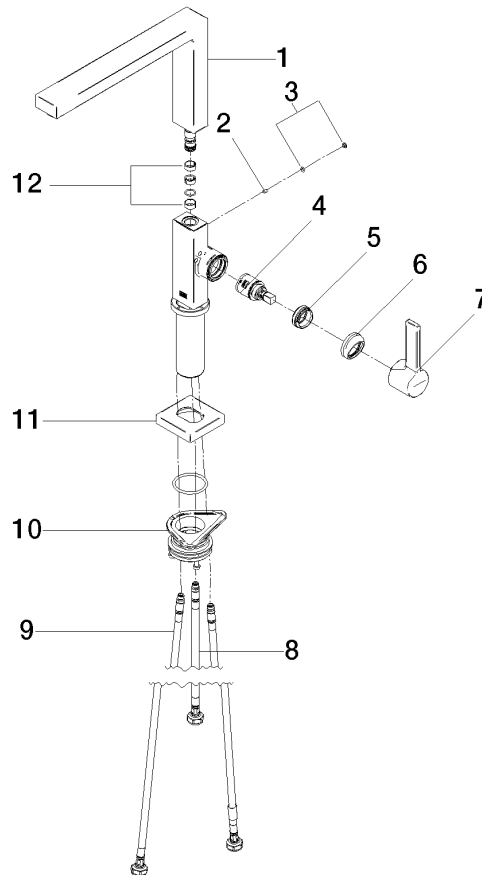
LOT Single-lever mixer for rinsing/Profi spray - Chrome

LOT

33 826 680 Product version from 7/1/2023

Certificates and sustainability

LGA_38



Spare parts list

No.	Item Number	Name	Quantity used	Delivery time
1	90 11 06 218 00-00	spout	1.00	10
9	04 30 04 101 00 90	hose	2.00	2
8	04 30 04 100 00 90	hose	1.00	2
6	90 28 30 052 00-00	cover	1.00	10
11	90 27 86 004 00-00	rosette	1.00	10
4	90 15 05 042 00 90	cartridge	1.00	2
7	90 20 86 004 00-00	handle	1.00	10
5	09 24 04 266 90	nut	1.00	2
3	90 31 20 087 00-00	plug	1.00	10
10	90 30 10 057 00 90	fixing set	1.00	2
2	09 31 11 044 90	pin	1.00	2
12	90 28 22 217 01-00	spout	1.00	10