

ENO Single-lever mixer Pull-out - Platinum

ENO

33 845 760



- 220mm projection
- pivotable spout 130°
- air-enriched flow
- height of mixer 288 mm
- height up to aerator 187 mm
- hole diameter 35 mm
- 1600mm metal shower hose
- max. flow 10 l/min at 3 bar flow pressure
- lead-free
- This product can help a building meet the requirements of Green Building Rating Systems, e.g. LEED®, BREEAM®, DGNB

Intrinsic protection against back flow.

| | | |
|--|--------------------------------|---------------|
|  | Platinum | 33 845 760-08 |
|  | Chrome | 33 845 760-00 |
|  | Brushed Platinum | 33 845 760-06 |
|  | Dark Chrome | 33 845 760-19 |
|  | Brushed Durabronze (23kt Gold) | 33 845 760-28 |
|  | Brushed Champagne (22kt Gold) | 33 845 760-46 |
|  | Champagne (22kt Gold) | 33 845 760-47 |
|  | Brushed Chrome | 33 845 760-93 |
|  | Brushed Dark Platinum | 33 845 760-99 |

Recommended miscellaneous

Strainer waste with control handle - Platinum 10 712 970-08

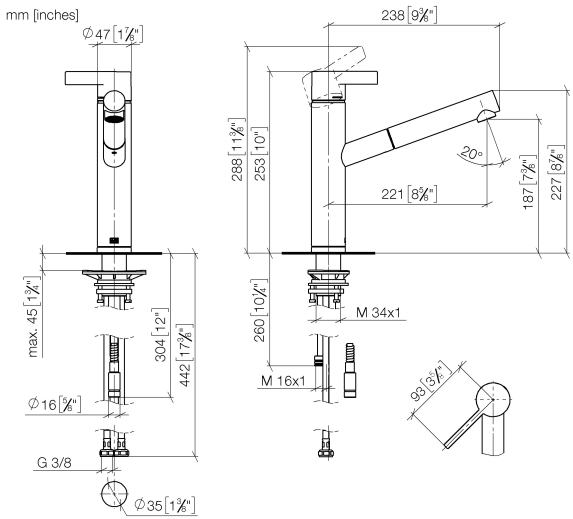


Recommended miscellaneous

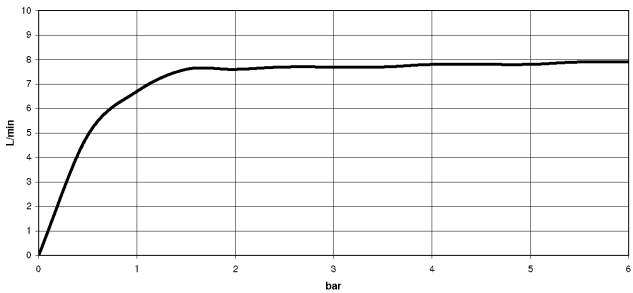
Dispenser without rosette - Platinum 82 424 970-08



33 845 760



Flow rate chart



Codes & Standards

DIN 4109

EN 1717

Executive Order
no. 1007

ISO 3822

Ü-Zeichen



ENO Single-lever mixer Pull-out - Platinum

ENO

33 845 760

Certificates

LGA_28

GDV_0400

Belgaqua_21-027-2

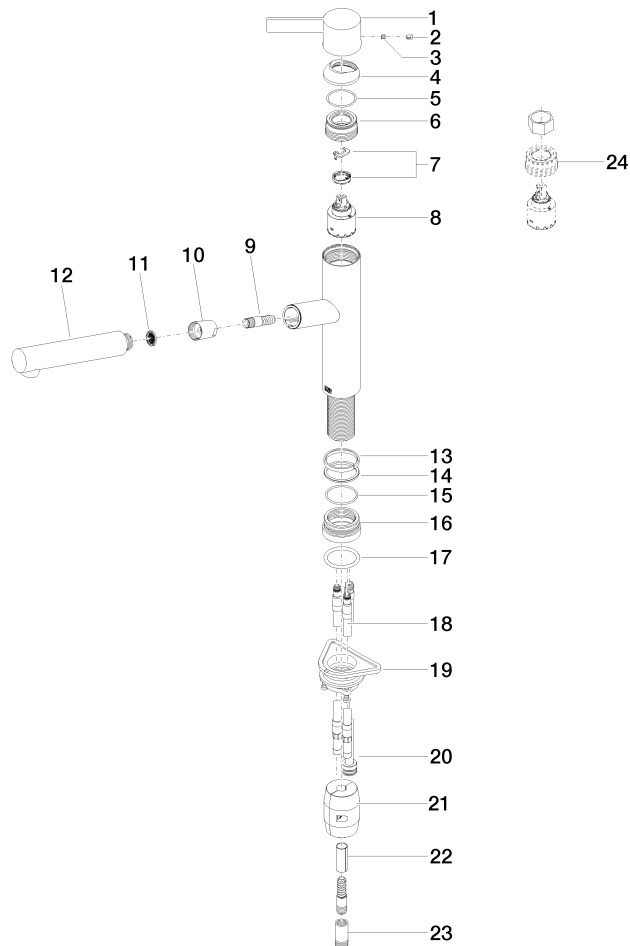
33 845 760

Product version from 2/26/2015 to 5/15/2020

Product version from 5/15/2020 to 1/7/2021

Product version from 1/7/2021 to 5/7/2021

Parts for other
finishes can be found
here: [Chrome](#)





ENO Single-lever mixer Pull-out - Platinum

ENO

33 845 760

Spare parts list

Product version from 2/26/2015 to 5/15/2020

Product version from 5/15/2020 to 1/7/2021

Product version from 1/7/2021 to 5/7/2021

| No. | Item Number | Name | Quantity used | Delivery time |
|-----|-----------------|--------|---------------|---------------|
| | 09 20 76 001-08 | handle | 25 | 40 |